

ICAO – INSTRUMENT APPROACH CHART

AMDT 4  
 DOC 8168 ED. 5 – 2006  
 CHANGE: MAG VAR AND BOX FREQ UPADATED

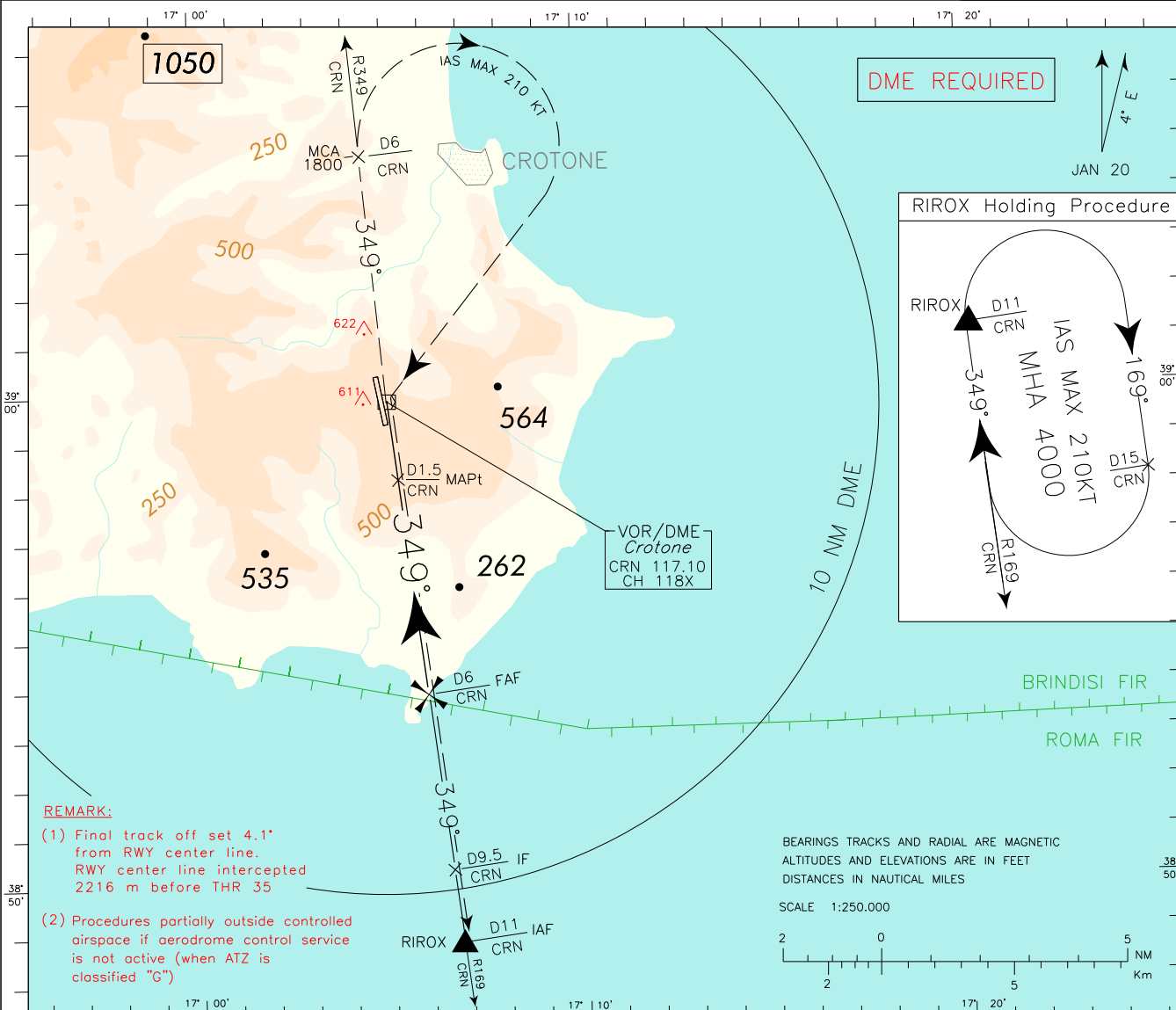
**WARNING:** Users of this procedure shall assure themselves in every circumstance their safety with regard to other aircraft which may operate near aerodrome.

APP Roma Radar 118.800 (133.250)  
 AFIS Crotone Aerodrome INFO CH 119.105

AD ELEV 522

L  
I  
B  
C

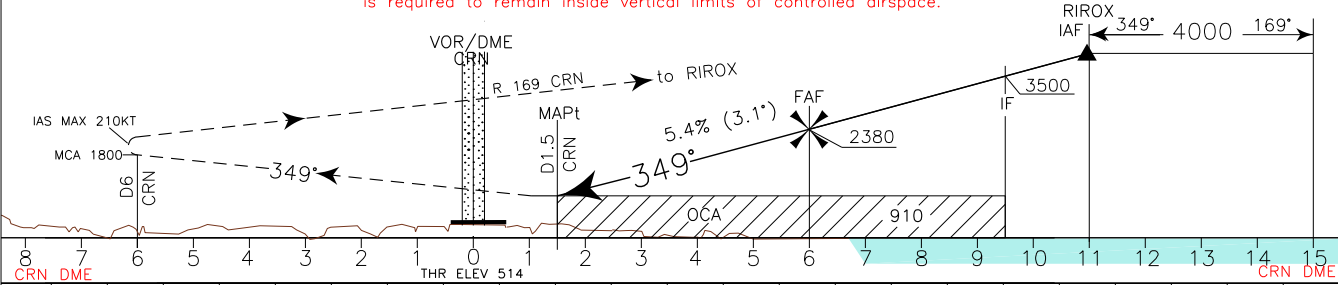
CROTONE  
 VOR X RWY 35



**REMARK:**  
 (1) Final track off set 4.1' from RWY center line. RWY center line intercepted 2216 m before THR 35  
 (2) Procedures partially outside controlled airspace if aerodrome control service is not active (when ATZ is classified "G")

**TRANSITION ALT 6000** MISSED APPROACH: At 1.5 NM CRN DME proceed on RDL 349 CRN VOR (TR 349°) climbing to 4000 ft. On RDL349/6NM CRN VOR/DME, at 1800 ft or above, turn right (IAS MAX 210 kt) to CRN VOR. Leave CRN VOR on RDL169 bound to RIXOX (RDL 169/11 NM CRN VOR/DME). Right turn holding pattern towards the station on RDL 169 CRN VOR between 11 NM and 15 NM CRN DME (IAS MAX 210 kt – MHA 4000 ft).

**REMARK:** Missed approach obstacles clearance is provided by 2.5% gradient. 4.0% (243ft/NM) up to reach 2000ft is required to remain inside vertical limits of controlled airspace.



OCA (OCH)		A	B	C	D	GS	FT PER MIN	FAF-MAPt 4.5 NM	MAPt-THR 1.05 NM	D M E	ALT (HGT)	MNM SECT ALT CRN VOR
STRAIGHT IN APPROACH	VOR/DME	910 (396)				80	434	3 : 23	0 : 47	6	2380(1866)	
		100	543	2 : 42	0 : 38	5	2050(1536)					
		120	651	2 : 15	0 : 31	4	1720(1206)					
		140	760	1 : 56	0 : 27	3	1400(886)					
CIRCLING		1350(828)	1370(848)	1540 (1018)		160	868	1 : 41	0 : 24	2	1070(556)	

<b>FIX/POINT</b>	<b>Coordinates (WGS84)</b>
IAF (RIROX)	38°48'50.2" N 017°06'41.9" E
IF	38°50'19.6" N 017°06'27.9" E
FAF	38°53'48.3" N 017°05'55.2" E
MAPt	38°58'16.5" N 017°05'13.0" E