

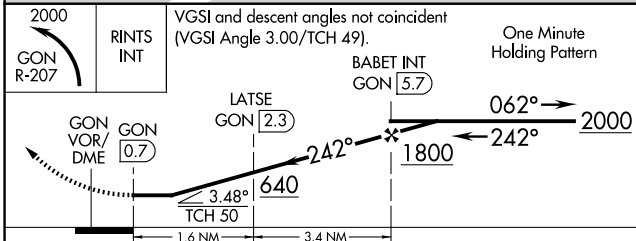
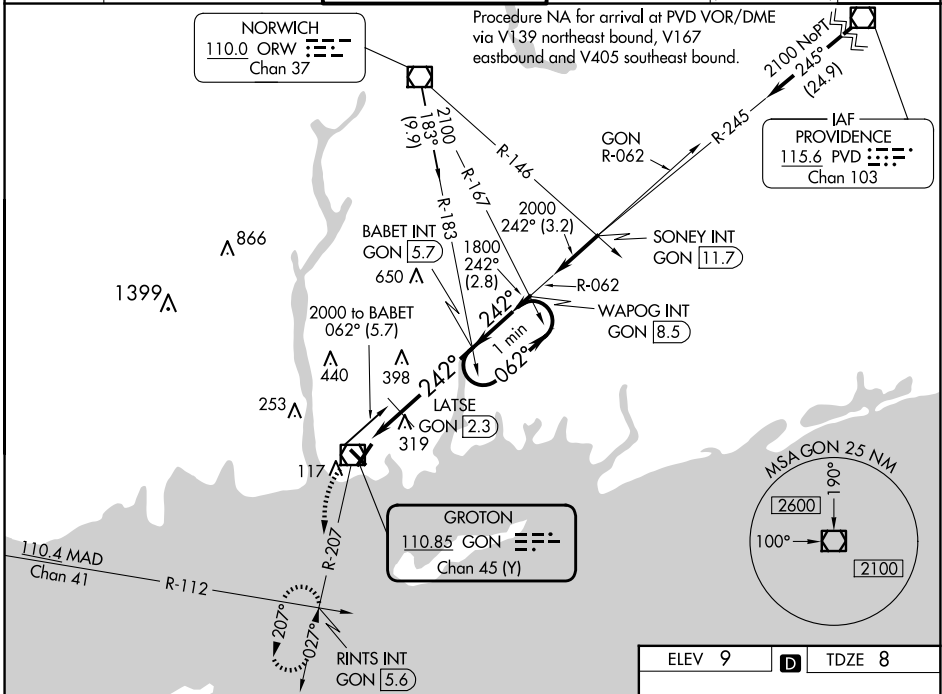
VOR/DME GON 110.85 Chan 45 (Y)	APP CRS 242°	Rwy Idg TDZE Apt Elev	5000 8 9
---	------------------------	-----------------------------	-------------------------------------

VOR RWY 23

GROTON-NEW LONDON (GON)

⚠ Circling Rwy 15 NA at night.
⚠ Rwy 23 helicopter visibility reduction below 1 SM NA.
 MISSED APPROACH: Climbing left turn to 2000 via GON R-207 to RINTS INT/GON 5.6 DME and hold.

ATIS 127.0	PROVIDENCE APP CON * 125.75 319.2	GROTON TOWER * 125.6 (CTAF) 0 236.775	GND CON 121.65 236.775	CLNC DEL 119.85 (when twr closed)	CLNC DEL 121.65
----------------------	---	---	----------------------------------	--	---------------------------



CATEGORY	A	B	C	D
S-23	640-1	632 (700-1)	640-1 ³ / ₄	632 (700-1 ³ / ₄)
CIRCLING	640-1	631 (700-1)	700-2 691 (700-2)	840-2 ³ / ₄ 831 (900-2 ³ / ₄)
LATSE FIX MINIMUMS				
S-23	580-1	572 (600-1)	580-1 ⁵ / ₈	572 (600-1 ⁵ / ₈)
CIRCLING	580-1 571 (600-1)	620-1 611 (700-1)	700-2 691 (700-2)	840-2 ³ / ₄ 831 (900-2 ³ / ₄)

ELEV 9	D	TDZE 8
--------	----------	--------

REIL Rws 23 and 33
 HIRL Rws 5-23 and 15-33 **Ⓛ**
 FAF to MAP 5 NM

Knots	60	90	120	150	180
Min:Sec	5:00	3:20	2:30	2:00	1:40

NE-1, 20 MAR 2025 to 17 APR 2025

NE-1, 20 MAR 2025 to 17 APR 2025