

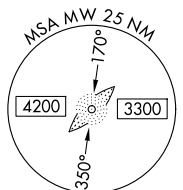
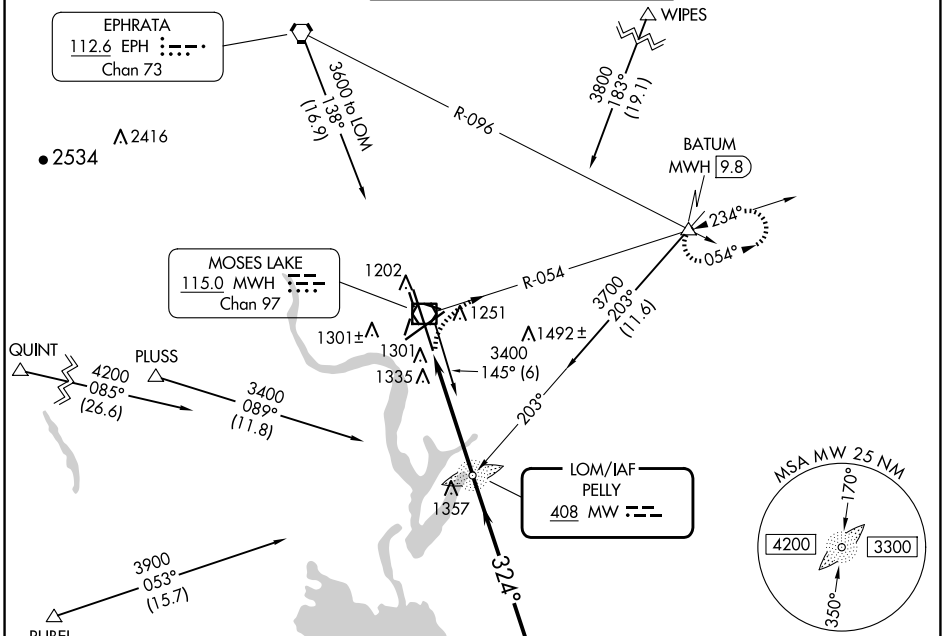
LOM MW 408	APP CRS 324°	Rwy Idg 13492
		TDZE 1167
		Apt Elev 1189

NDB RWY 32R

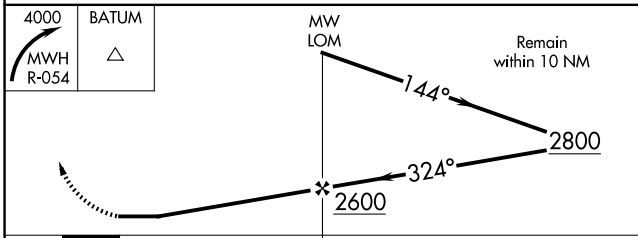
GRANT COUNTY INTL (MWH)

MALSR MISSED APPROACH: Climbing right turn to 4000 via MWH R-054 to BATUM INT/MWH 9.8 DME and hold.	
--	--

ATIS 119.05	GRANT COUNTY APP CON * 126.4 379.95	GRANT COUNTY TOWER * 118.25 (CTAF) 257.8 (EAST) 128.0 257.8 (WEST)	GND CON 121.9	UNICOM 122.95
-----------------------	---	---	-------------------------	-------------------------



Profile view diagram showing altitudes 4000, 2800, 2600, 279°, 144°.



ELEV 1189	D TDZE 1167
MRL Rwy 4-22 and 18-36 REIL Rwy 14L and 22 HIRL Rwy 14L-32R REIL Rwy 4	
FAF to MAP 4.7 NM	
Knots	60 90 120 150 180
Min:Sec	4:42 3:08 2:21 1:53 1:34

CATEGORY	A	B	C	D
S-32R	1680/40 513 (500-¾)		1680/50 513 (500-1)	1680-1½ 513 (500-1½)
CIRCLING	1680-1 491 (500-1)		1680-1½ 491 (500-1½)	1820-2 631 (700-2)

NW-1, 20 MAR 2025 to 17 APR 2025

NW-1, 20 MAR 2025 to 17 APR 2025