

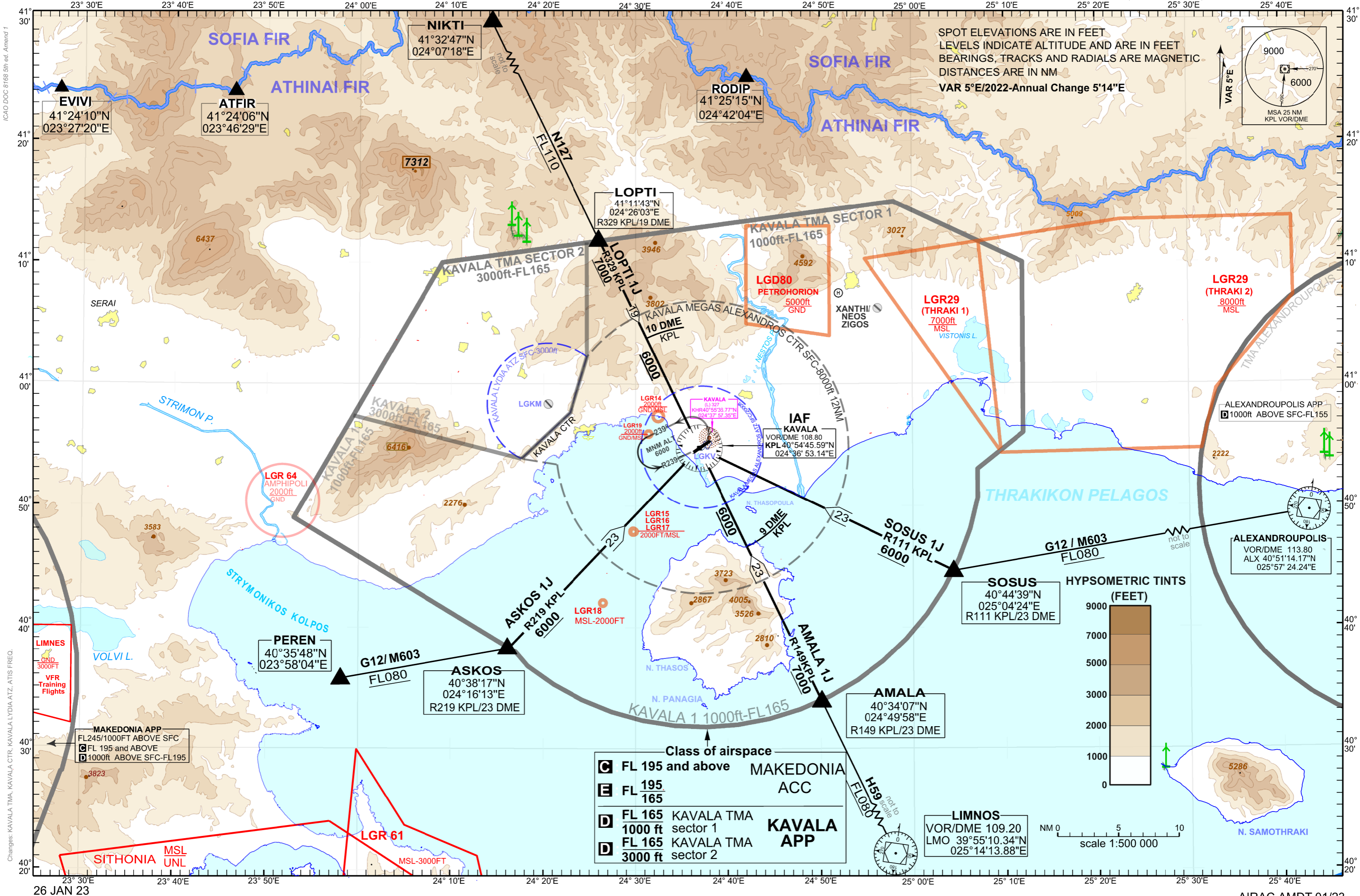
STANDARD ARRIVAL CHART - INSTRUMENT (STAR) - ICAO

TRANSITION ALTITUDE 7000 ft

APP 124.650 TWR 118.400 ATIS 128.155

KAVALA/MEGAS ALEXANDROS RWY 23

AMALA 1J, ASKOS 1J, LOPTI 1J, SOSUS 1J



ICAO DOC 8168 5th ed. Amend 1

Changes: KAVALA TMA, KAVALA CTR, KAVALA LYDIA ATZ, ATIS FREQ.