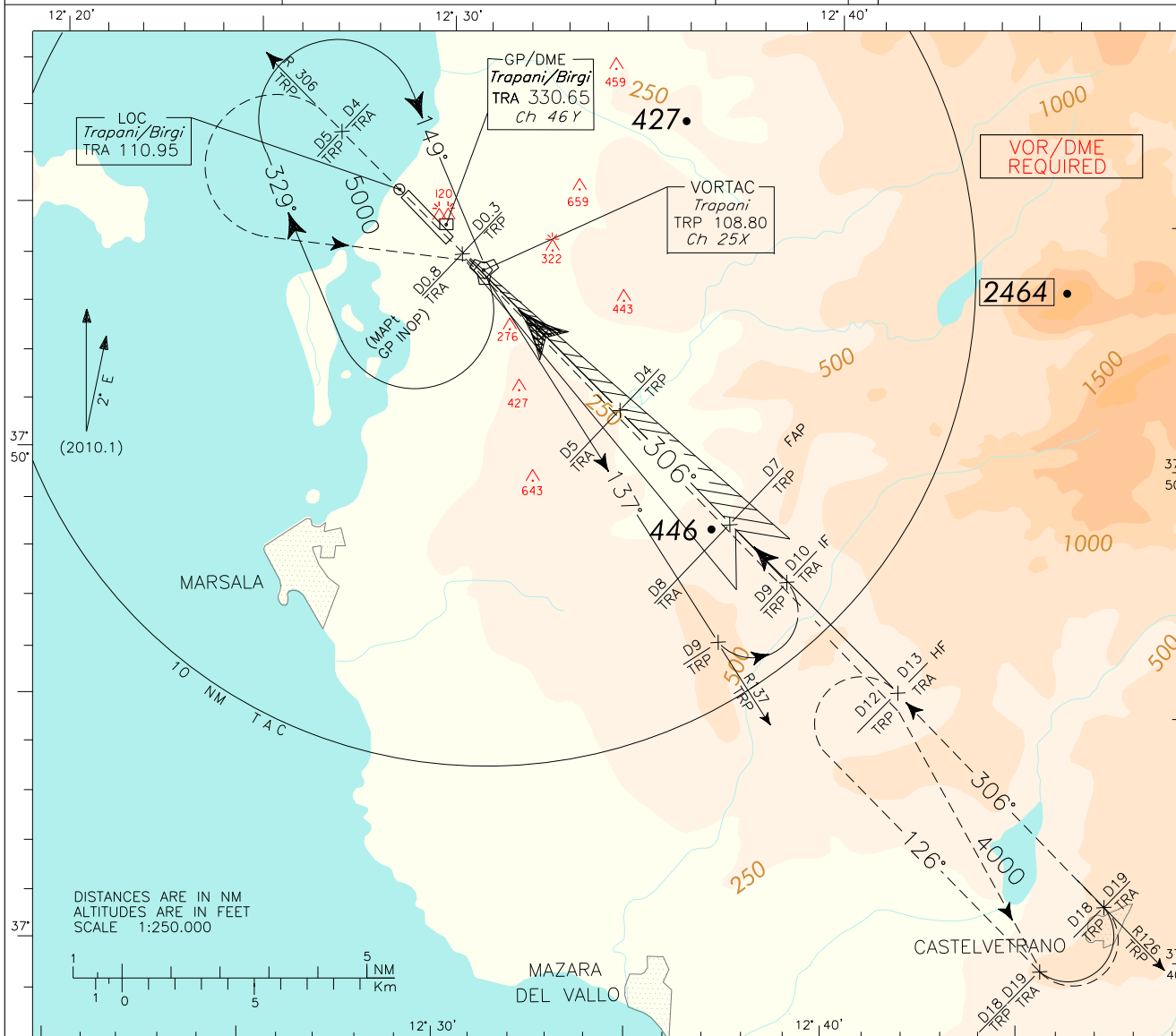


ICAO - INSTRUMENT APPROACH CHART

REMARK: TRP DME DISTANCES NOT ACCORDING ICAO STANDARD	APP	Trapani APP/Radar	119.950	122.805	AD ELEV	L I C I T	TRAPANI/BIRGI ILS or LOC-Y (CAT. A/B) RWY 31L
	TWR	Trapani TWR	119.730	122.100	26		

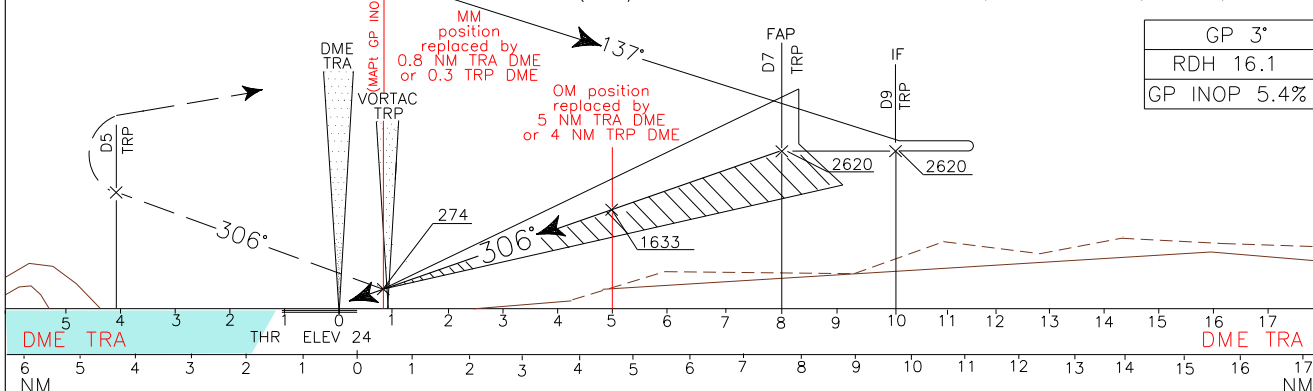
DOC.8168-ED.3-1986

CHANGE: RDH VALUE AND LAYOUT UPDATED

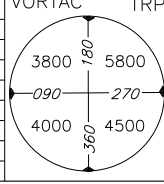
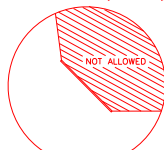


TRANSITION ALT 5000

MISSED APPROACH: Proceed on RDL 306 TRP VOR (TR 306°) and climb to 4000 ft. At 5 NM TRP TACAN, or 4 NM TRA DME, turn left bound to TRP VORTAC to leave on RDL 126 to Missed Approach holding pattern.  
(R126/12 NM TRP VORTAC or 13 NM TRA DME, inbound TR 306°, 4000 ft, left turns)



STRAIGHT IN APPROACH	OCA (OCH)		C	D	(1) Circling South/South West of runway only.	GS	FT PER MIN	DME TRA	ALT (HGT)	MNM SECT ALT VORTAC TRP
	A	B								
ILS	239 (215)	251 (227)						8	2620 (2600)	
GP INOP	640 (620)									
CIRCLING (1)	640 (620)									



Edited by AM-CIGA