

VOR/DME MIE <b>114.4</b> Chan <b>91</b>	APP CRS <b>143°</b>	Rwy Idg <b>6500</b> TDZE <b>933</b> Apt Elev <b>937</b>
---	------------------------	---

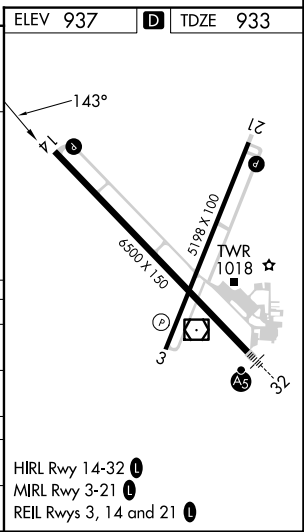
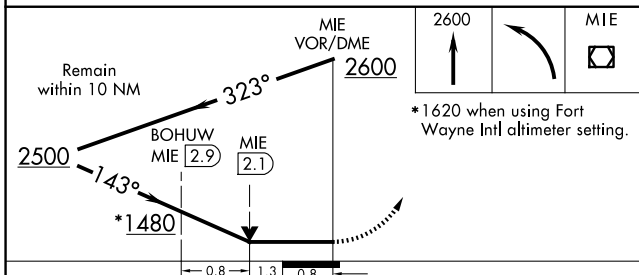
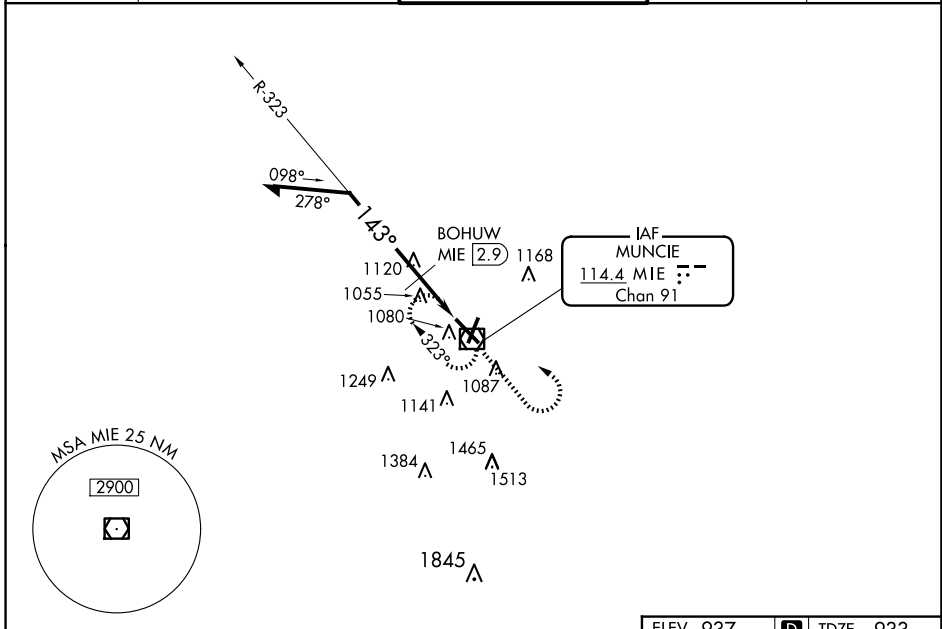
# VOR RWY 14

DELAWARE COUNTY RGNL (MIE)

**⚠** When local altimeter setting not received, use Fort Wayne Intl altimeter setting and increase all MDAs 140 feet; increase S-14 Cat C visibility ½ SM, Cat D ¼ SM; increase Circling Cat C/D visibility ½ SM. BOHUW fix minimums: increase S-14 Cat C visibility ½ SM, Cat D ¼ SM and Circling Cat C/D visibility ½ SM. VDP NA with Fort Wayne altimeter setting.

**MISSED APPROACH:** Climb to 2600 then left turn direct MIE VOR/DME and hold.

ATIS <b>133.25</b>	INDIANAPOLIS APP CON <b>120.65 317.8</b>	MUNCIE TOWER ★ <b>120.1 (CTAF) 0</b>	GND CON <b>121.9</b>	UNICOM <b>122.95</b>
-----------------------	---	---	-------------------------	-------------------------



CATEGORY	A	B	C	D
S-14	1480-1 547 (600-1)		1480-1½ 547 (600-1½)	1480-1¾ 547 (600-1¾)
<b>C</b> CIRCLING	1480-1 543 (600-1)		1480-1½ 543 (600-1½)	1560-2 623 (700-2)
<b>BOHUW FIX MINIMUMS</b>				
S-14	1380-1 447 (500-1)		1380-1¼ 447 (500-1¼)	1380-1½ 447 (500-1½)
<b>C</b> CIRCLING	1460-1 523 (600-1)		1480-1½ 543 (600-1½)	1560-2 623 (700-2)

HIRL Rwy 14-32 **0**  
MIRL Rwy 3-21 **0**  
REIL Rws 3, 14 and 21 **0**

EC-2, 20 MAR 2025 to 17 APR 2025

EC-2, 20 MAR 2025 to 17 APR 2025