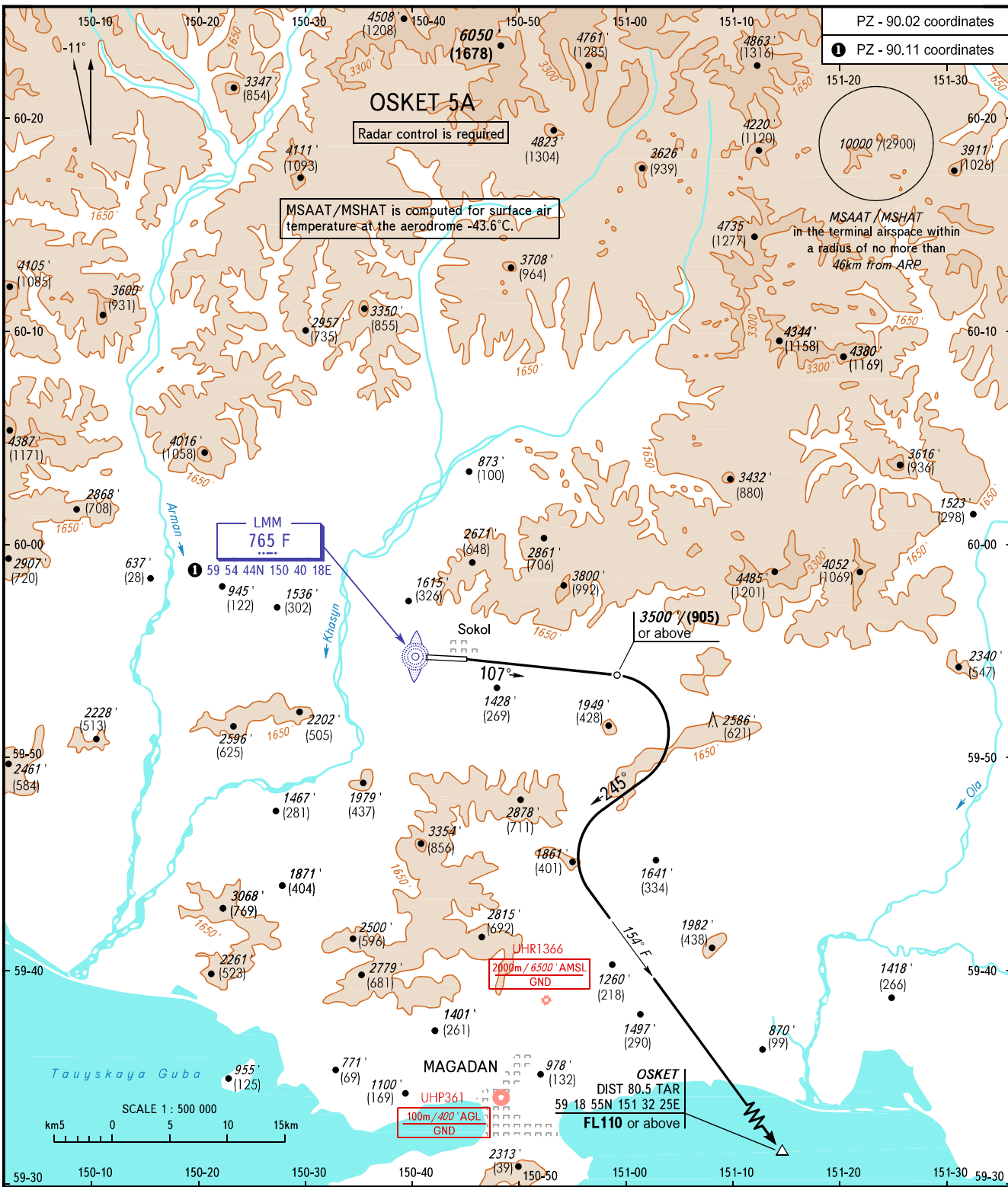


STANDARD DEPARTURE CHART  
INSTRUMENT (SID) - ICAO

TRANSITION ALT: **10000'**  
TRANSITION HGT: **(2900)**

MAGADAN, RUSSIA  
SOKOL  
RWY 10



PZ - 90.02 coordinates  
PZ - 90.11 coordinates

MSAAT/MSHAT is computed for surface air temperature at the aerodrome -43.6°C.

MSAAT/MSHAT in the terminal airspace within a radius of no more than 46km from ARP

LMM  
765 F  
59 54 44N 150 40 18E

UHR1366  
2000m/6500' AMSL  
GND

UHP361  
100m/400' AGL  
GND

OSKET DIST 80.5 TAR  
59 18 55N 151 32 25E  
FL110 or above

TOWER APPROACH  
120.800  
119.300

**CLOSE-IN OBSTACLES**

107°	▲	▲
RWY 28 THR	597' (16)	609' (20)
NOT TO SCALE		

BEARINGS AND TRACKS ARE MAGNETIC  
ALTITUDES IN FEET  
HEIGHTS IN METRES  
ELEVATIONS IN FEET AND METRES  
DISTANCES IN KILOMETRES

Alt set: -QNH(QFE on req);  
-hPa(mm on req).

Minimum climb gradients for **OSKET 5A**  
4.6% up to 3500'/(905) due to OBST, then  
4.3% up to 7000'/(1970) due to the airspace structure.

CHANGE: New chart