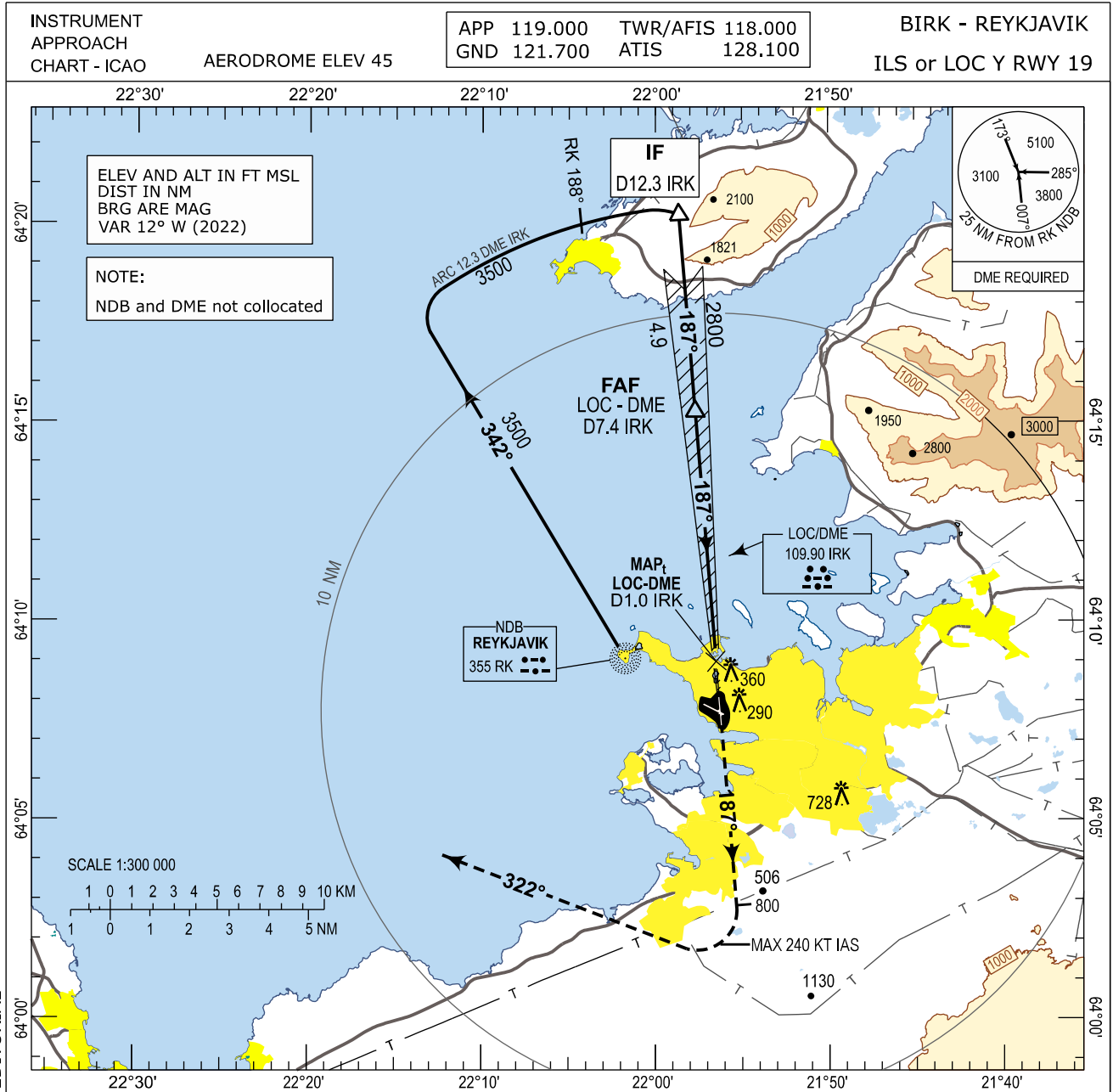


Reykjavik ILS or LOC Y RWY 19 Instrument Approach Chart - ICAO



CHANGES: EDITORIAL

MISSED APPROACH:

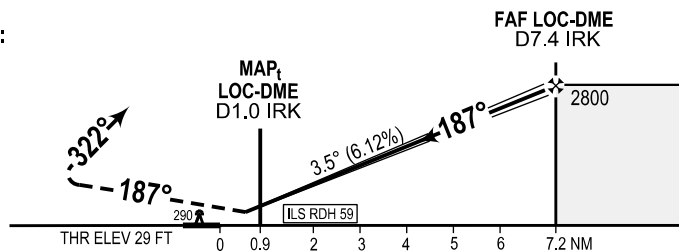
Climb on course 187° passing 800, turn right heading 322° climbing to 3500, expect radar vectoring by REYKJAVIK APP

TRANSITION ALT 7000

LOST COMMUNICATION PROCEDURE:

Right turn arc D12.3 IRK to intercept IRK LOC for another approach

NO TURN BEFORE MAP



OCA (H)	A	B	C	D	Remarks
ILS CAT I	200 (171)	210 (181)	220 (191)	230 (201)	
LOC-DME	460 (431)	460 (431)	460 (431)	460 (431)	MAPt at D1.0 IRK
CIRCLING	660 (615)	660 (615)	1060 (1015)	1060 (1015)	

DME IRK	1	2	3	4	5	6	7
ALTITUDE	410	780	1160	1530	1910	2290	2680

Timing not authorized for defining MAP

GS	kt	75	100	120	140	160	180
FAF - D1.0 IRK (6.4 NM)	MIN:SEC	5:07	3:50	3:12	2:45	2:24	2:08
Rate of descent (6.12%)	ft/MIN	465	620	745	865	990	1115

THIS PAGE INTENTIONALLY LEFT BLANK