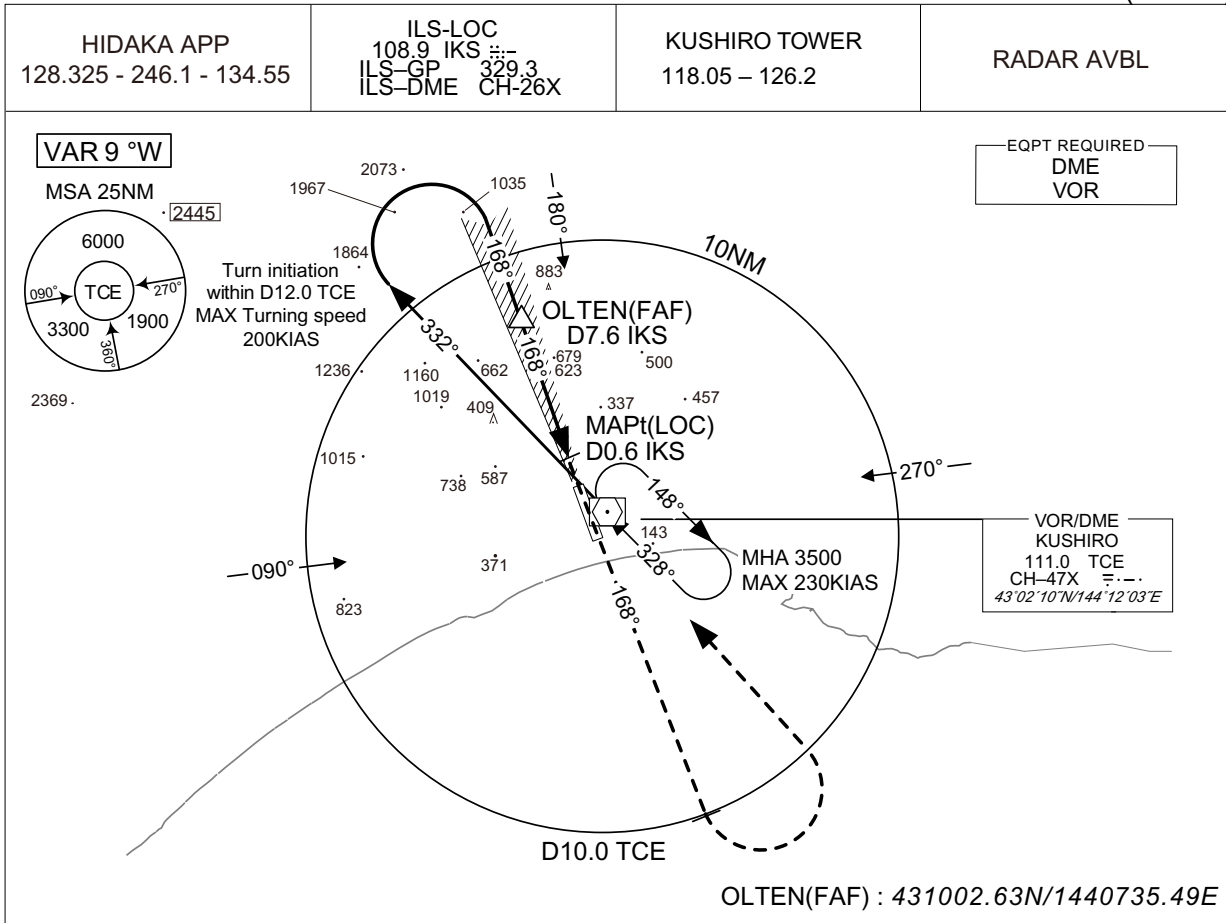


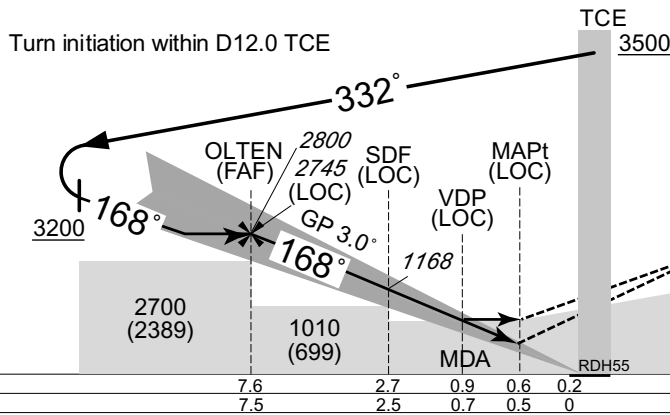
INSTRUMENT APPROACH CHART

RJCK / KUSHIRO

ILS Y or LOC Y RWY17 (CAT III)



NM to IKS	FAF	7	6	5	4	3	2	1	MAPt
ALT (3.0° APCH Path)	2745	2542	2223	1905	1587	1268	949	631	-



7.6	2.7	0.9	0.6	0.2	DME to IKS
7.5	2.5	0.7	0.5	0	NM to THR

CAT	THR elev. 323				AD elev. 311		LOC		CIRCLING	
	CAT III	CAT II		CAT I		LOC		CIRCLING		
	RVR	DA(H)	RA	RVR	DA(H)	RVR/CMV	MDA(H)	RVR/CMV	MDA(H)	VIS
A									730 (419)	1600
B									770 (459)	
C	100	Not applicable.			523 (200)	550	590 (279)	800	770 (459)	2400
D								1200	870 (559)	3200

Circling to EAST side of RWY only.
Values of RA may increase or decrease rapidly affected by terrain between IKS 0.4DME and 0.8DME.

CHANGE : Description of SDF(LOC) in profile view.