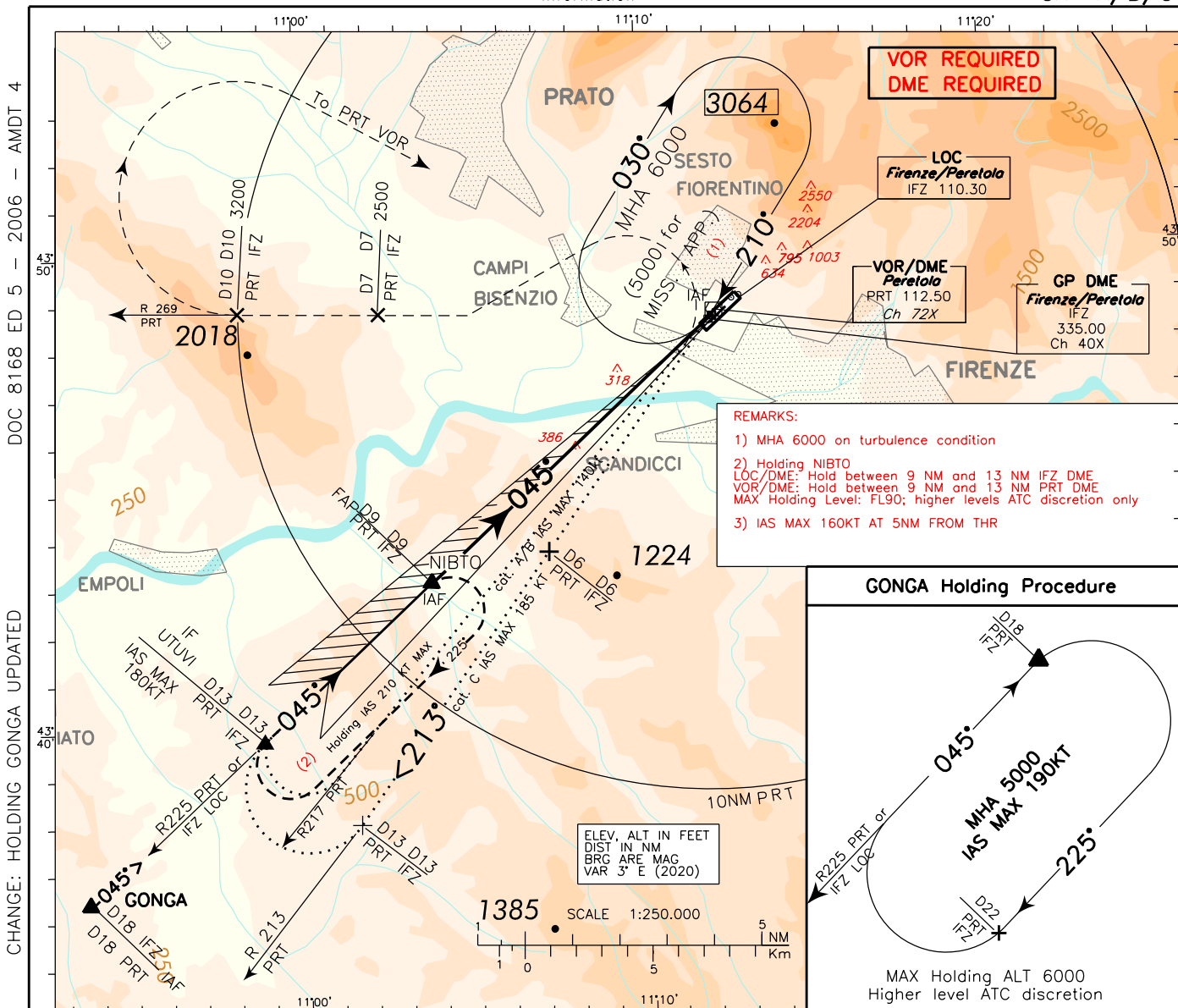


INSTRUMENT APPROACH CHART - ICAO

AERODROME ELEV
142

APP Firenze APP/Radar **125.825**
TWR Firenze TWR **118.300**
ATIS Firenze Terminal Information **122.100**
129.350

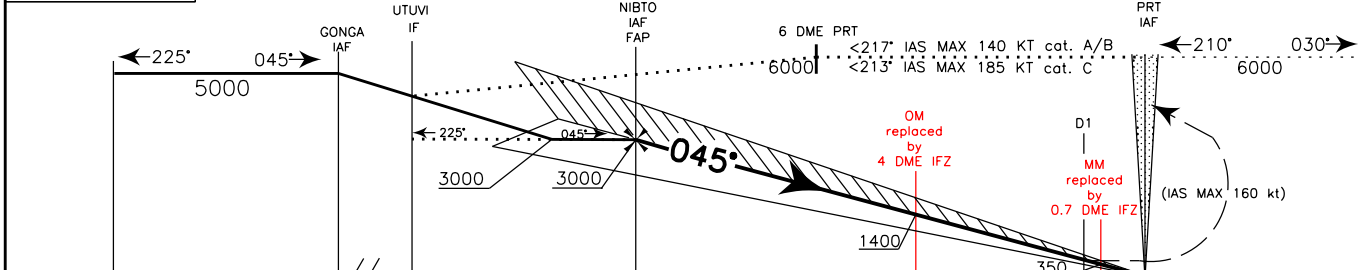
FIRENZE/PERETOLA (LIRQ)
ILS Y RWY 05
CAT A/B/C



CHANGE: HOLDING GONGA UPDATED

TRANSITION ALT 6000 MISSED APPROACH: As soon as practicable, not before 1 NM IFZ DME (1.1NM PRT DME) before THR05, climbing to 5000 ft, turn left (with IAS MAX 160 kt) to intercept and follow RDL 269 PRT VOR. At 10 NM PRT DME (MCA 3200ft) turn right (with IAS MAX 200 kt) bound to PRT VOR.

RDH 15.0 M
GP 3°



IFZ DME	23	22	21	20	19	18	13	12	11	10	9	8	7	6	5	4	3	2	1	0	1	2	3
PRT DME	23	22	21	20	19	18	13	12	11	10	9	8	7	6	5	4	3	2	1	0	1	2	3

OCA(OCH)		A	B	C	GS	FT PER MIN	DIST IFZ	ALT(HGT)	MNM SECT ALT	
STRAIGHT IN APPROACH	ILS M.A. MNM CLIMB GRADIENT 3.7%	625(502)	637(514)	645(522)					PRT	VOR
	GP INOP	VEDI LOC Y / SEE LOC Y			80	425	6 DME	2030(1907)	159	7800
CIRCLING NOT ALLOWED				100	530	5 DME	1715(1592)	069	4900	
				120	635	4 DME	1400(1277)			
				140	740	3 DME	1080(957)			
				160	850	2 DME	760(637)			