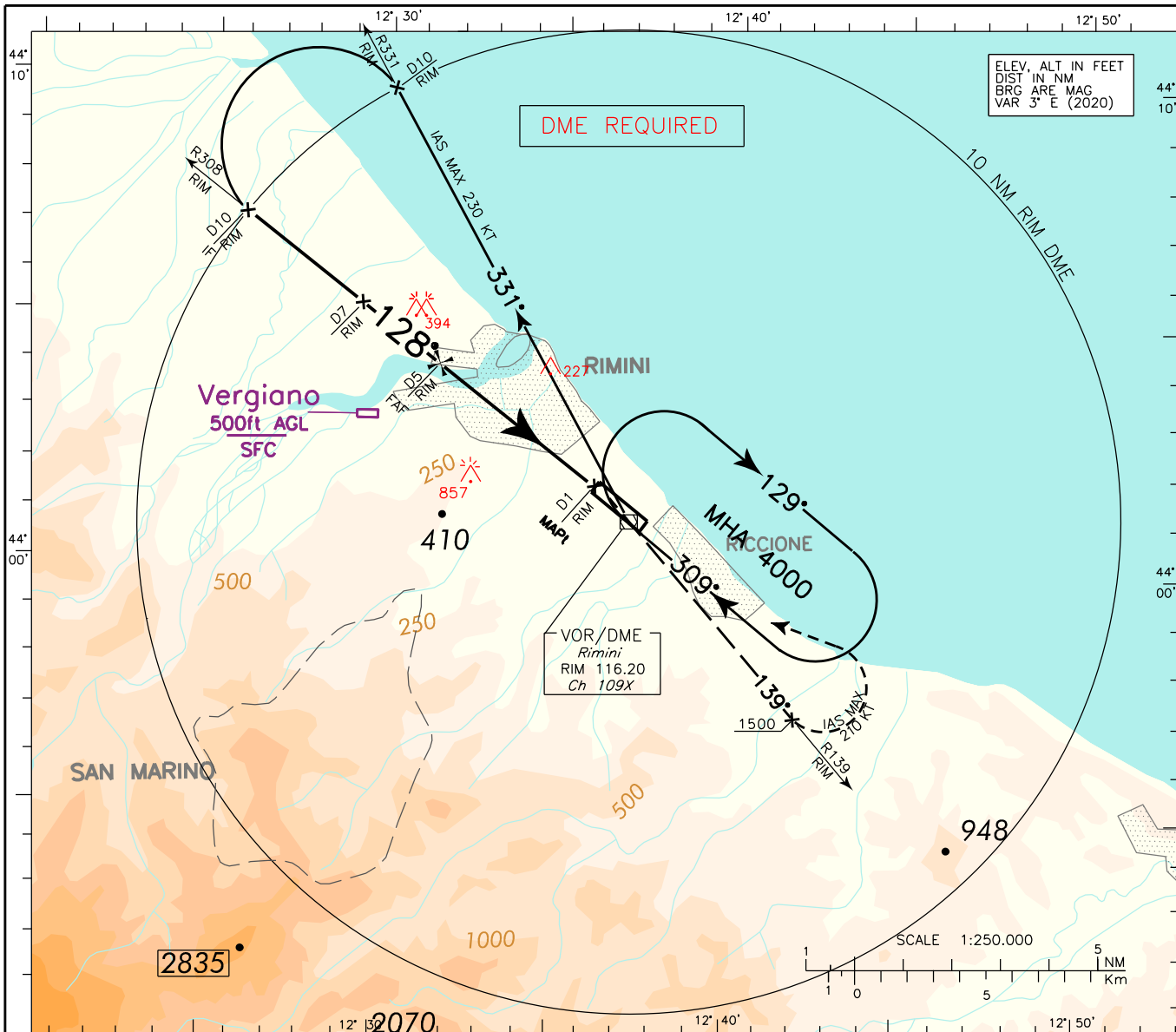


INSTRUMENT APPROACH CHART - ICAO

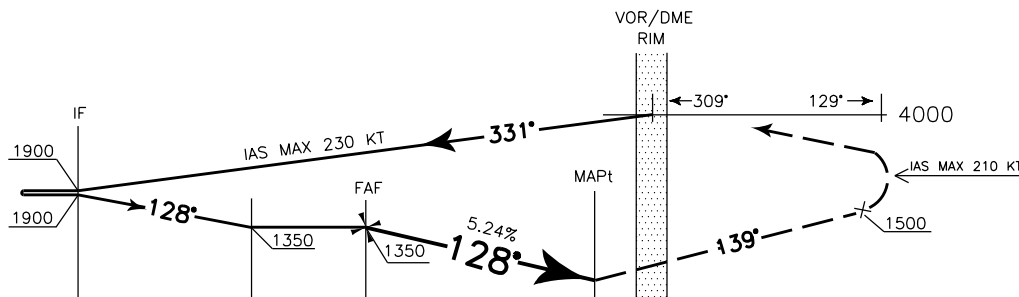
AERODROME ELEV APP Bologna APP/Radar **CH 118.150 (133.775)**
41 TWR Rimini TWR **131.225**

RIMINI/Miramare (LIPR)
VOR-Z RWY 12 (CAT. C-D)

CHANGE: RWY DESIGNATION MODIFIED - RIM VORTAC REPLACED BY RIM VOR/DME



TRANSITION ALT 6000 MISSED APPROACH: At D1 RIM DME climb to 4000 FT and, as soon as practicable, turn right to join RDL 139 RIM VOR. Passing 1500 FT turn left bound to RIM VOR/DME holding pattern to reach at 4000 FT (IAS MAX 210 KT during turn).



D12	D11	D10	D9	D8	D7	D6	D5	D4	D3	D2	D1	D0	D1	D2	D3	D4	D5	D6
10	9	8	7	6	5	4	3	2	1	0	1	2	3	4	5	6	7	
												RIM DME (NM)						
												THR 12 (NM)						

OCA (OCH)		A	B	C	D	REMARK: Circling procedure allowed East of RWY only. 	GS	FT PER MIN	RIM DME	ALT (HGT)	MNM SECT ALT 25 NM RIM VOR
STRAIGHT IN APPROACH	VORDME			600 (580)			130	690	D 5	1350(1330)	
							150	797	D 4	1030(1010)	
							170	903	D 3	710 (690)	
CIRCLING				910 (869)		190	1009				
						210	1115				