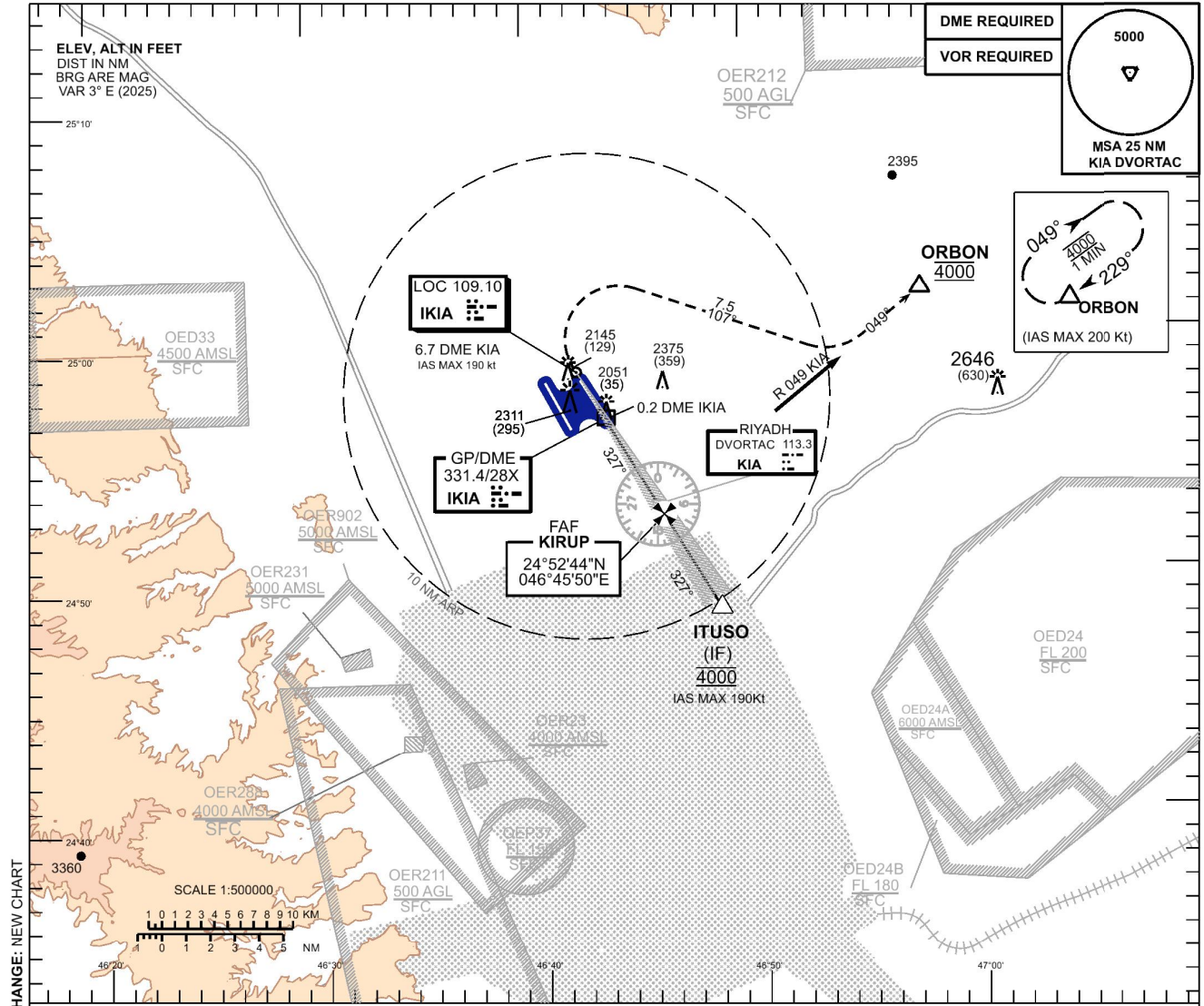


**INSTRUMENT
APPROACH
CHART - ICAO**

AERODROME ELEV 2053 ft
HEIGHTS RELATED TO
THR RWY 33R - ELEV 2016 ft

RIYADH/King Khaled Intl (OERK)
ILS Z or LOC RWY 33R

APP :120.0 128.5
Final :120.6 119.75
TWR :118.6(E) 118.8(W)
118.3
ATIS :127.15



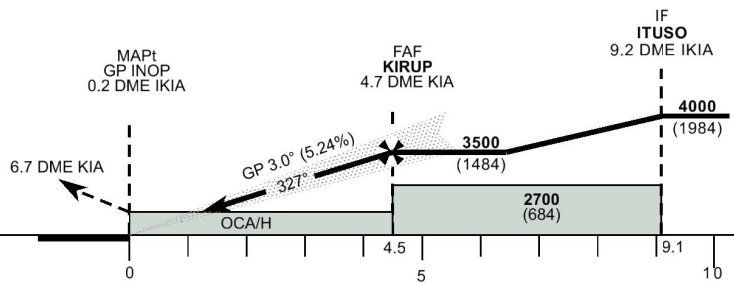
CHANGE: NEW CHART

TRANSITION ALT 13000
TRANSITION LEVEL FL150

MISSED APPROACH
Climb on RWY HDG to **6.7 DME KIA**,
turn right on track **107°** and intercept and follow
RDL 049 KIA to **ORBON** at **4000** and hold.
(MAX IAS 190 Kts during missed approach)

ILS RDH 55

THR ELEV 2016
NM to/from THR RWY 33R



		ACFT CAT	A	B	C	D/DL										
Straight-in Approach	CAT I	OCA(H)	2222(206)				GND SPEED		Knots	70	90	110	130	150	170	190
		RVR(m)	550				Rate of Descent		ft/min	370	480	580	690	800	900	1010
	GP INOP	OCA(H)	2350(334)				Time		Min:sec	3:51	3:00	2:27	2:04	1:48	1:35	1:25
		RVR(m)	800				DME IKIA NM			4	3	2	1			
Circling	OCA(H)	N/A				ALT (HGT)			3290	2972	2653	2334				
	VIS(m)	N/A				3° APCH			(1274)	(956)	(637)	(318)				

NO CIRCLING
- CIRCLING NOT AUTHORISED
- RVR RELATED TO DA(H)/MDA(H)=OCA(H)

Amdt:Original, 28 Nov 24

ICAO PANS OPS