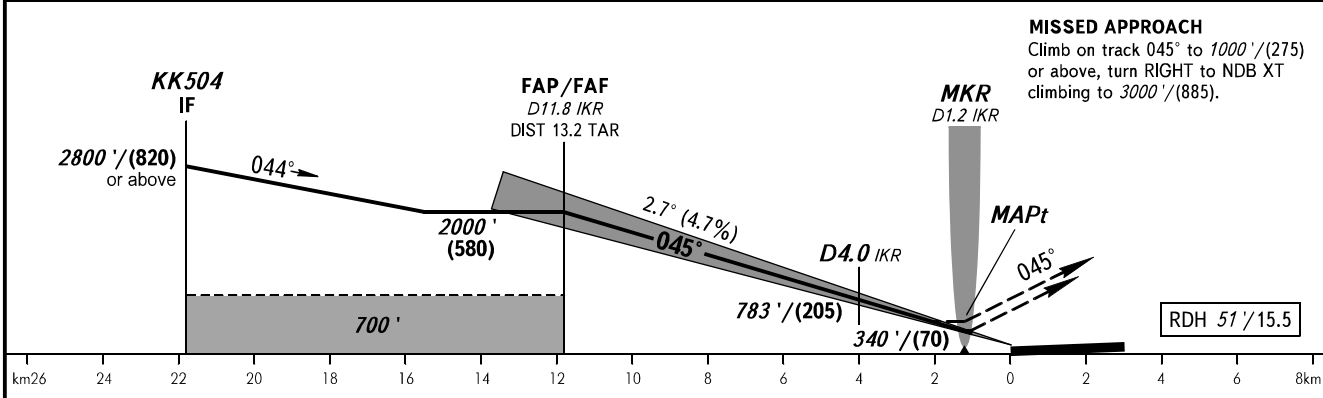
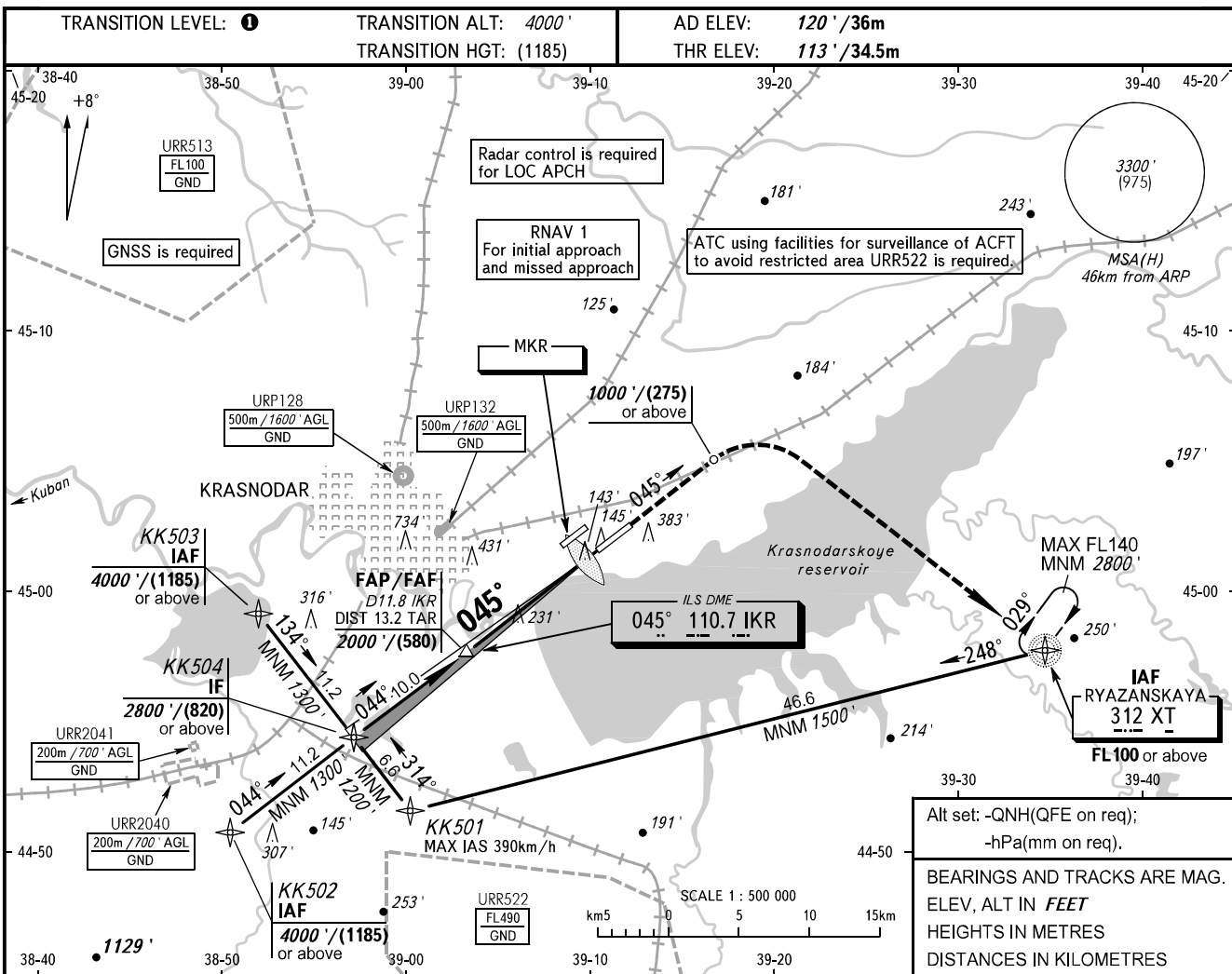


**INSTRUMENT  
APPROACH  
CHART - ICAO**

**KRASNODAR, RUSSIA  
PASHKOVSKIY  
ILS Z CAT I/II, LOC Z RWY 05R**

RADAR	121.300
TOWER	118.200



OCA(H)		A	B	C	D
Straight-in	CAT I	277' (164')	287' (174')	296' (184')	306' (194')
	CAT II	168' (56')	178' (66')	190' (78')	206' (94')
Approach	LOC	480' (370')	480' (370')	480' (370')	480' (370')
	Circling	680' (560')	680' (560')	780' (660')	830' (710')

**1** TRANSITION LEVEL:  
- FL060 when QNH is 977 hPa (733mm mercury column) or above;  
- FL070 when QNH is 941 hPa (706mm mercury column) or above,  
but less than 977 hPa (733mm mercury column).

**NOTE:**  
1. ILS DME IKR reads zero at RWY 05R THR.  
2. Timing not authorized for defining MAPt.  
3. Turn before passing MAPt is PROHIBITED.  
4. Wind shear is expected.

GROUND SPEED	km/h	150	180	210	240	270	300	330	360	390
		RATE OF DESCENT	m/s	2.0	2.4	2.7	3.1	3.5	3.9	4.3
	ft/min	385	463	540	617	694	771	848	925	1002

CHANGE: HLDG