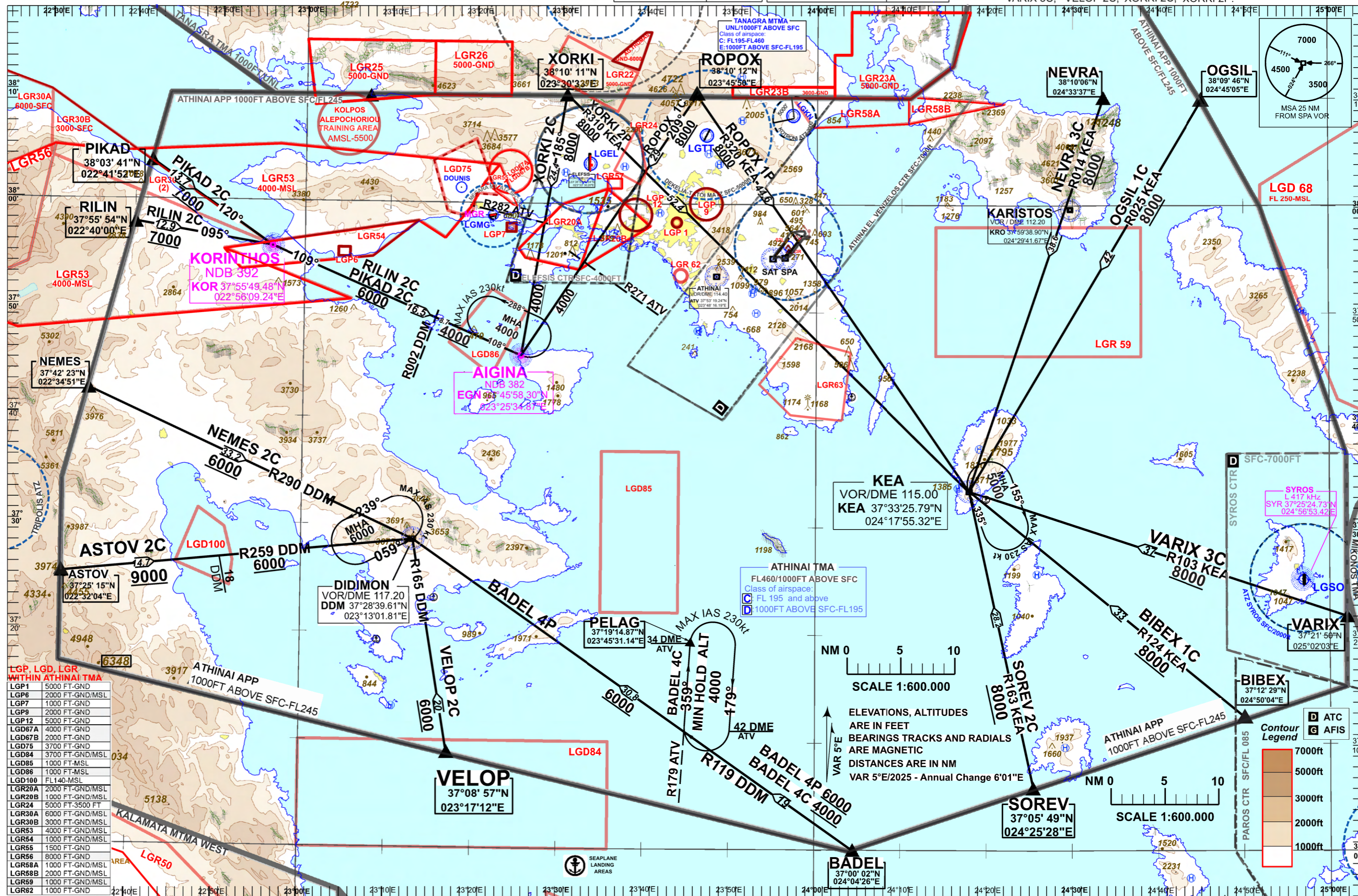


TRANSITION ALTITUDE 9000 ft	ATIS 136.125	TOWER WEST 136.275	ARRIVAL WEST 132.975
		TOWER EAST 118.625	ARRIVAL EAST 126.575

ASTOV 2C, BADEL 4P, BADEL 4C, BIBEX 1C, NEVRA 3C, NEMES 2C, OGSIL 1C, PIKAD 2C, RILIN 2C, ROPOX 1C, ROPOX 1P, SOREV 2C, VARIX 3C, VELOP 2C, XORKI 2C, XORKI 2P.



CHANGES: LGR20 - LGR23 - LGR30 - LGR58 - LGR67 rename

LGP, LGD, LGR	HEIGHT
LGP1	5000 FT-GND
LGP6	2000 FT-GND/MSL
LGP7	1000 FT-GND
LGP9	2000 FT-GND
LGP12	5000 FT-GND
LGD67A	4000 FT-GND
LGD67B	2000 FT-GND
LGD75	3700 FT-GND
LGD84	3700 FT-GND/MSL
LGD85	1000 FT-MSL
LGD86	1000 FT-MSL
LGD100	FL 140-MSL
LGR20A	2000 FT-GND/MSL
LGR20B	1000 FT-GND/MSL
LGR24	5000 FT-3500 FT
LGR30A	6000 FT-GND/MSL
LGR30B	3000 FT-GND/MSL
LGR53	4000 FT-GND/MSL
LGR54	1000 FT-GND/MSL
LGR55	1500 FT-GND
LGR56	8000 FT-GND
LGR58A	1000 FT-GND/MSL
LGR58B	2000 FT-GND/MSL
LGR59	1000 FT-GND/MSL
LGR62	1000 FT-GND

Contour Legend	Height
(Dark Brown)	7000ft
(Medium Brown)	5000ft
(Light Brown)	3000ft
(Tan)	2000ft
(Light Tan)	1000ft