

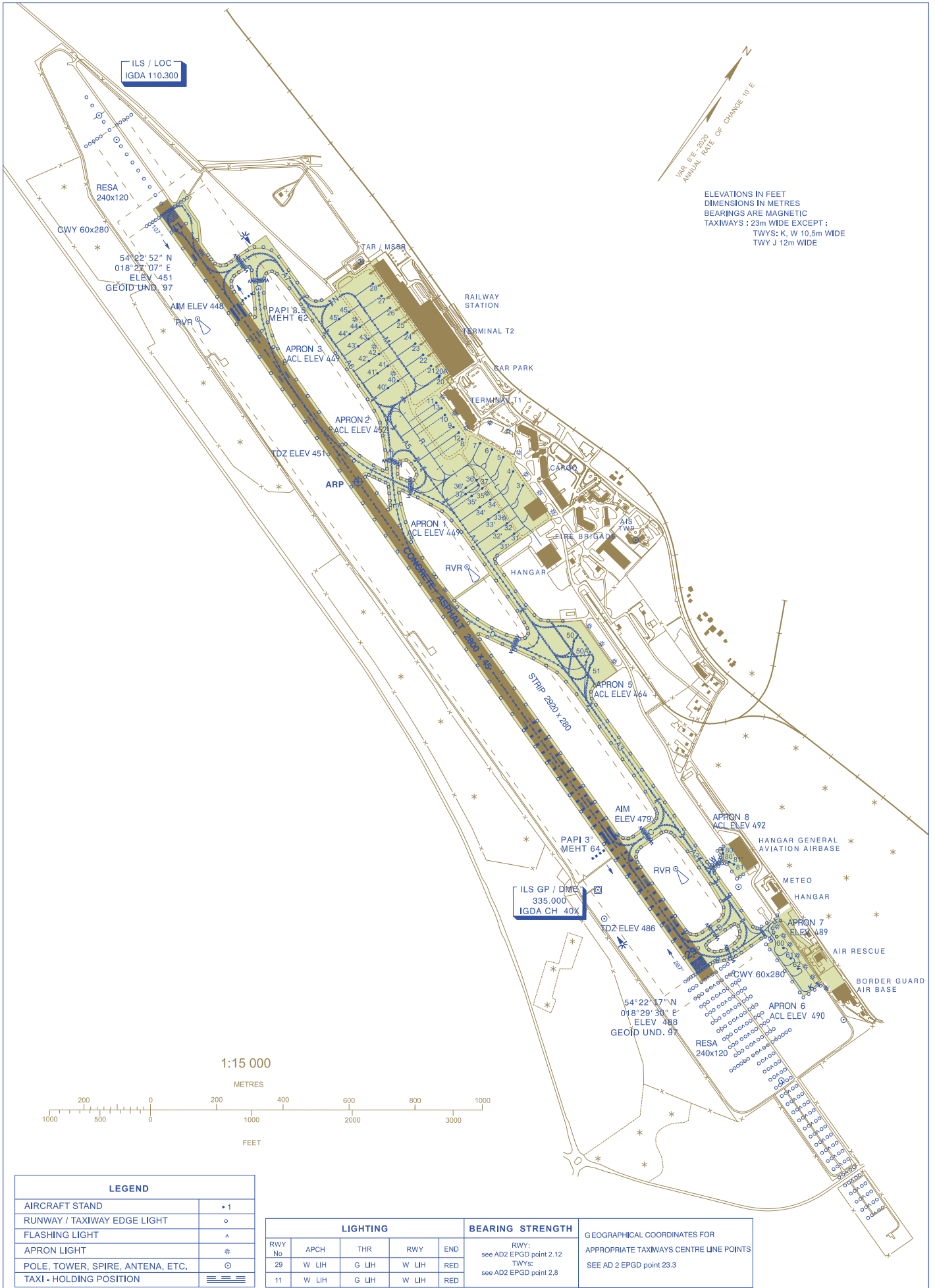
**AERODROME CHART - ICAO**

54°22'39" N  
018°27'58" E

ELEV 488 ft  
GEOID UND. 97 ft

Gdańsk GROUND 131.330  
Gdańsk TOWER 118.105

**GDAŃSK Lech Walesa**



Correction: STRIP and CWY changed. ELEV and GEOID UND. In PL-EVRF2007-NH

LEGEND	
AIRCRAFT STAND	• 1
RUNWAY / TAXIWAY EDGE LIGHT	○
FLASHING LIGHT	△
APRON LIGHT	*
POLE, TOWER, SPIRE, ANTENA, ETC.	⊙
TAXI - HOLDING POSITION	≡≡≡

LIGHTING					BEARING STRENGTH	
RWY No	APCH	THR	RWY	END	RWY: see AD2 EPGD point 2.12 TWYS: see AD2 EPGD point 2.8	
29	W LIH	G LIH	W LIH	RED		
11	W LIH	G LIH	W LIH	RED		

GEOGRAPHICAL COORDINATES FOR APPROPRIATE TAXIWAYS CENTRE LINE POINTS	
SEE AD 2 EPGD point 23.3	