

PENSACOLA, FLORIDA

RNAV (GPS) RWY 7R

- (USN)

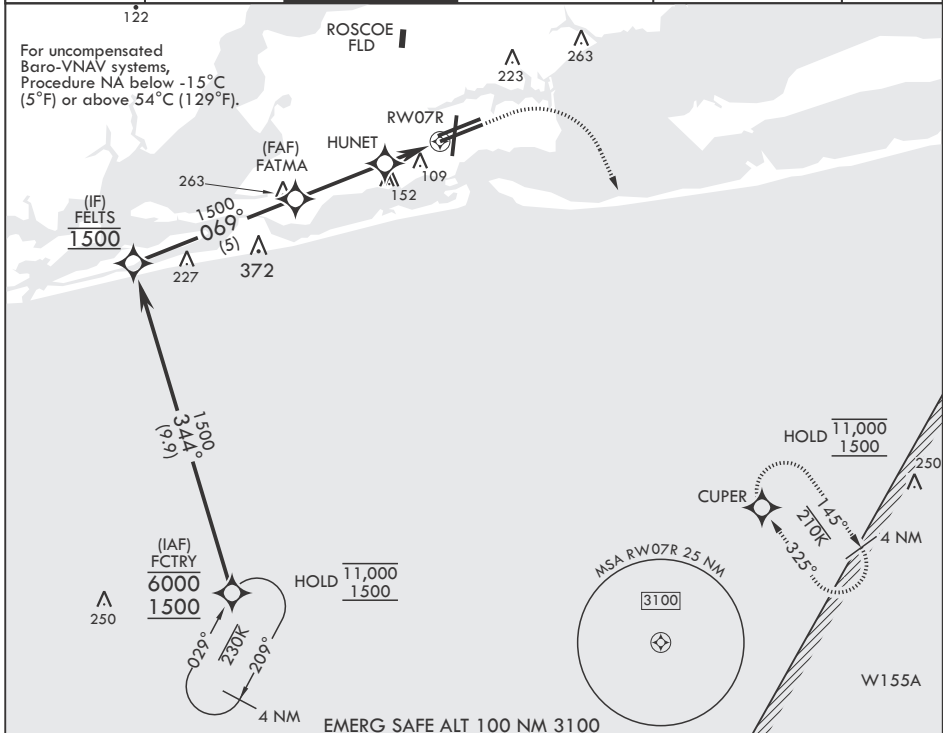
PENSACOLA NAS (FORREST SHERMAN FLD) (KNPA)

APCH CRS	Rwy Idg	8000
069°	TDZE	25
	Arpt Elev	28

RNP APCH
RADAR required

MISSED APPROACH: Climb to 800 then climbing right turn to 1500 direct CUPER and hold.

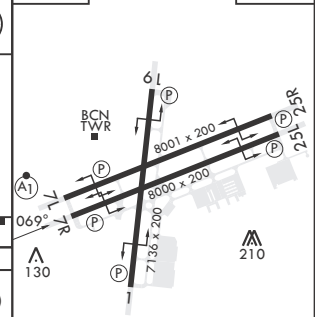
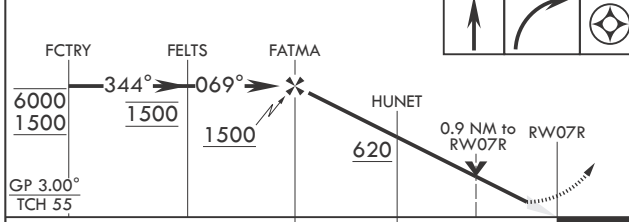
ATIS	APP CON	SHERMAN TOWER	SHERMAN GND CON	SHERMAN CLNC DEL	ASR/PAR
124.35 266.8	120.65 270.8	120.7 340.2	121.7 336.4	134.1 268.7	



SE-3, 20 MAR 2025 to 17 APR 2025

SE-3, 20 MAR 2025 to 17 APR 2025

800	1500	CUPER	ELEV 28	TDZE 25
-----	------	-------	---------	---------



CATEGORY	A	B	C	D	E
LNAV/VNAV DA	275- ³ / ₄ 250 (300- ³ / ₄)	280- ³ / ₄ 255 (300- ³ / ₄)	288- ⁷ / ₈ 263 (300- ⁷ / ₈)	299- ⁷ / ₈	274 (300- ⁷ / ₈)
LNAV MDA	380-1		355	(400-1)	
CIRCLING	520-1 492 (500-1)		540-1 ¹ / ₂ 512 (600-1 ¹ / ₂)	580-2 552 (600-2)	

HIRL all Rwys
REIL all Rwys

PENSACOLA, FLORIDA
Amdt 3 03NOV22

30°21'N - 87°19'W PENSACOLA NAS (FORREST SHERMAN FLD) (KNPA)

RNAV (GPS) RWY 7R