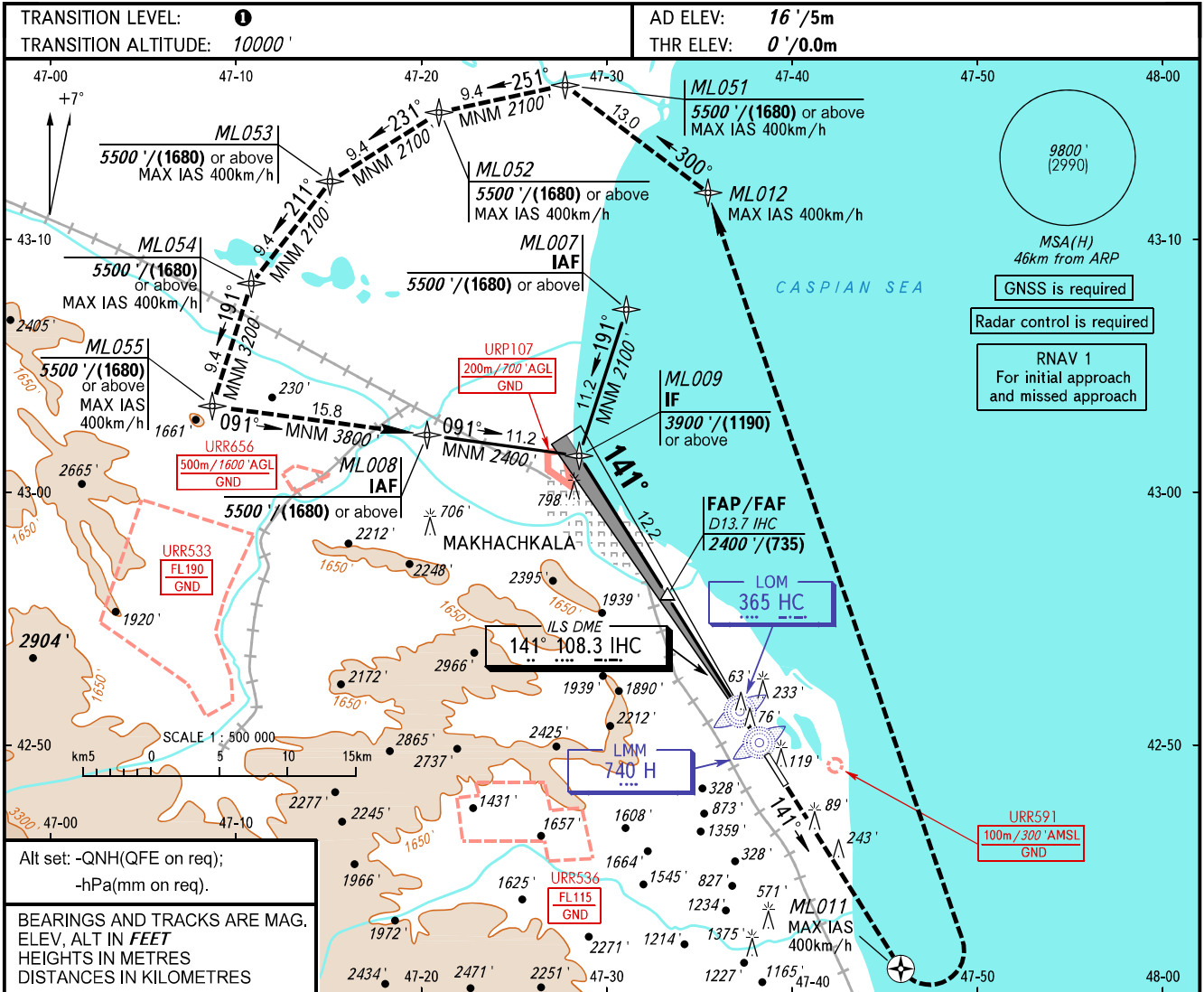


**INSTRUMENT
APPROACH
CHART - ICAO**

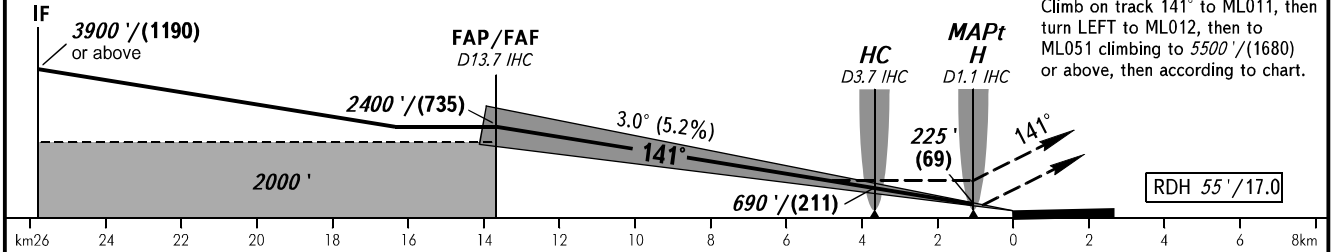
RADAR
START 121.300
121.300

MAKHACHKALA, RUSSIA
UYTASH
ILS Z CAT I, LOC Z RWY 14



DME IHC	12.0	10.0	8.0	6.0	4.0	2.0
ALTITUDE/HEIGHT	2118'/(646)	1774'/(541)	1431'/(437)	1087'/(332)	743'/(227)	399'/(122)

ML009 FAF is fixed by TAR (DIST 15.0). MAPt at LMM H. Timing not authorized for defining MAPt.



OCA(H)		A	B	C	D	TRANSITION LEVEL: - FL110 when QNH is 1013 hPa (760mm mercury column) or above; - FL120 when QNH is 977 hPa (733mm mercury column) or above, but less than 1013 hPa (760mm mercury column); - FL130 when QNH is less than 977 hPa (733mm mercury column). WARNING: 1. Visual manoeuvring west of the aerodrome is PROHIBITED. 2. DME IHC reads zero at RWY 14 THR.
Straight-in Approach	CAT I	182' (182')	192' (191')	201' (201')	211' (211')	
	LOC	740' (740')	740' (740')	740' (740')	740' (740')	
Circling		790' (770')	830' (810')	1720' (1700')	1870' (1860')	

GROUND SPEED	km/h	150	180	210	240	270	300	330	360	390	420	450
	m/s	2.2	2.6	3.0	3.5	3.9	4.3	4.8	5.2	5.6	6.1	6.5
RATE OF DESCENT	ft/min	427	512	597	682	768	853	938	1024	1109	1194	1280

CHANGE: New chart