

STANDARD DEPARTURE CHART - INSTRUMENT

VAR9° W

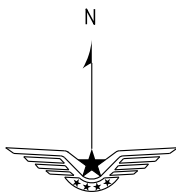
D-ATIS 126.25
TWR 118.85(124.35)

ZYCC CHANGCHUN/Longjiao
RWY24(ISLUK/BUTET)

BEARINGS ARE MAGNETIC.
ALTITUDES, ELEVATIONS
AND HEIGHTS IN METERS.
DME DISTANCES IN
NAUTICAL MILES.
DISTANCES IN KM.

APP01 119.45(127.9)
APP02 125.25(127.9)
APP03 120.2(127.9)

TL 3600
TA 3000
3300(QNH ≥ 1031hPa)
2700(QNH ≤ 979hPa)



NOT TO SCALE

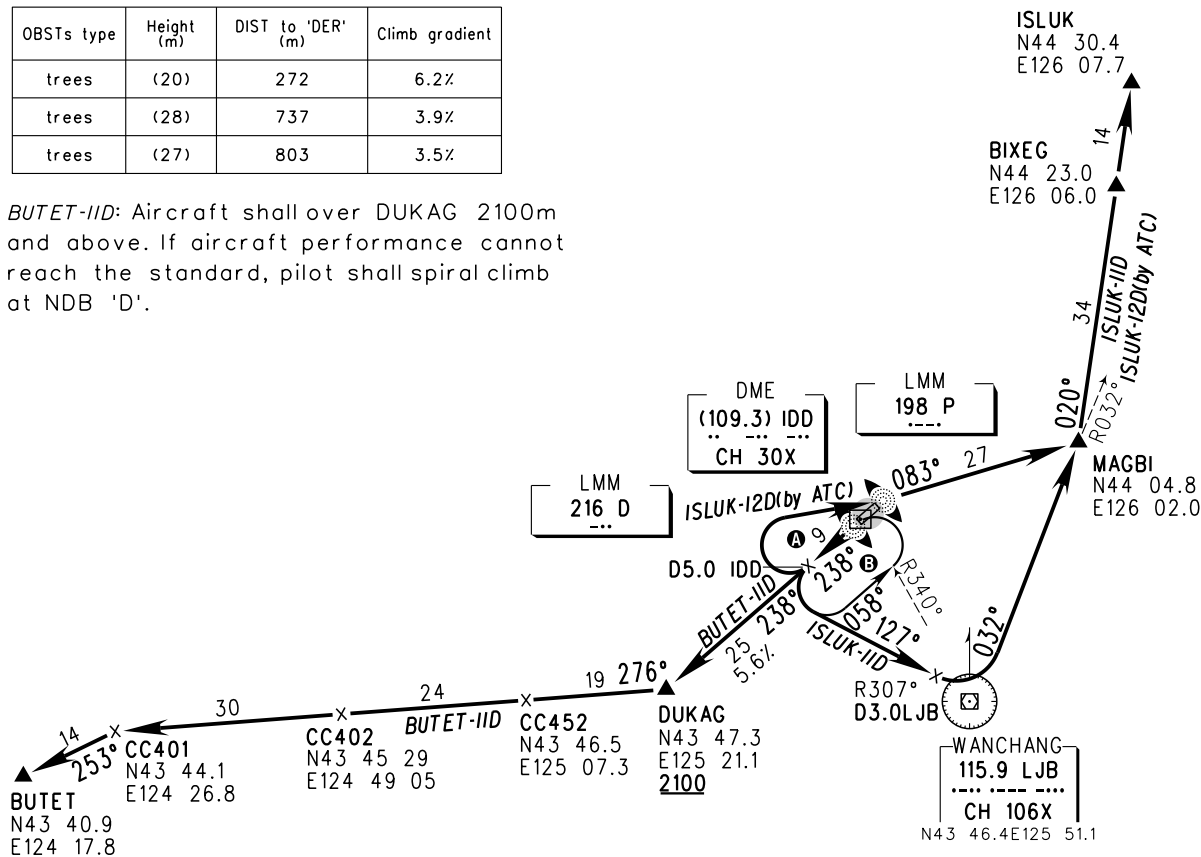
Departure turn MAX IAS220kt

Note:

- Some close-in OBSTs near DER, Climb gradient ≥ 6.2%. If aircraft cannot reach the standard, VIS > 2000m, Ceiling > 90m shall be required.

| OBSTs type | Height (m) | DIST to 'DER' (m) | Climb gradient |
|------------|------------|-------------------|----------------|
| trees | (20) | 272 | 6.2% |
| trees | (28) | 737 | 3.9% |
| trees | (27) | 803 | 3.5% |

- BUTET-IID:** Aircraft shall over DUKAG 2100m and above. If aircraft performance cannot reach the standard, pilot shall spiral climb at NDB 'D'.



Changes: APP03.