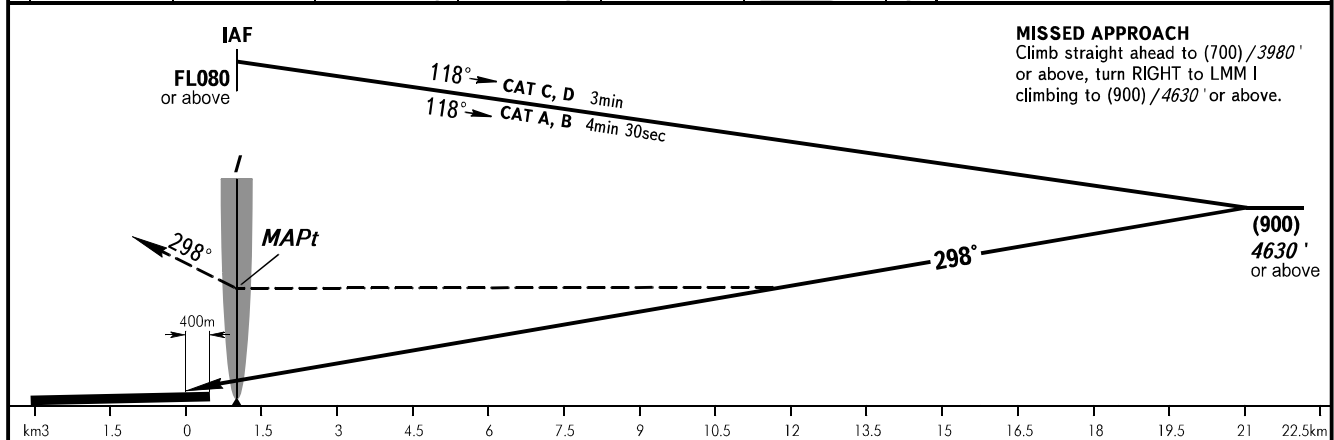
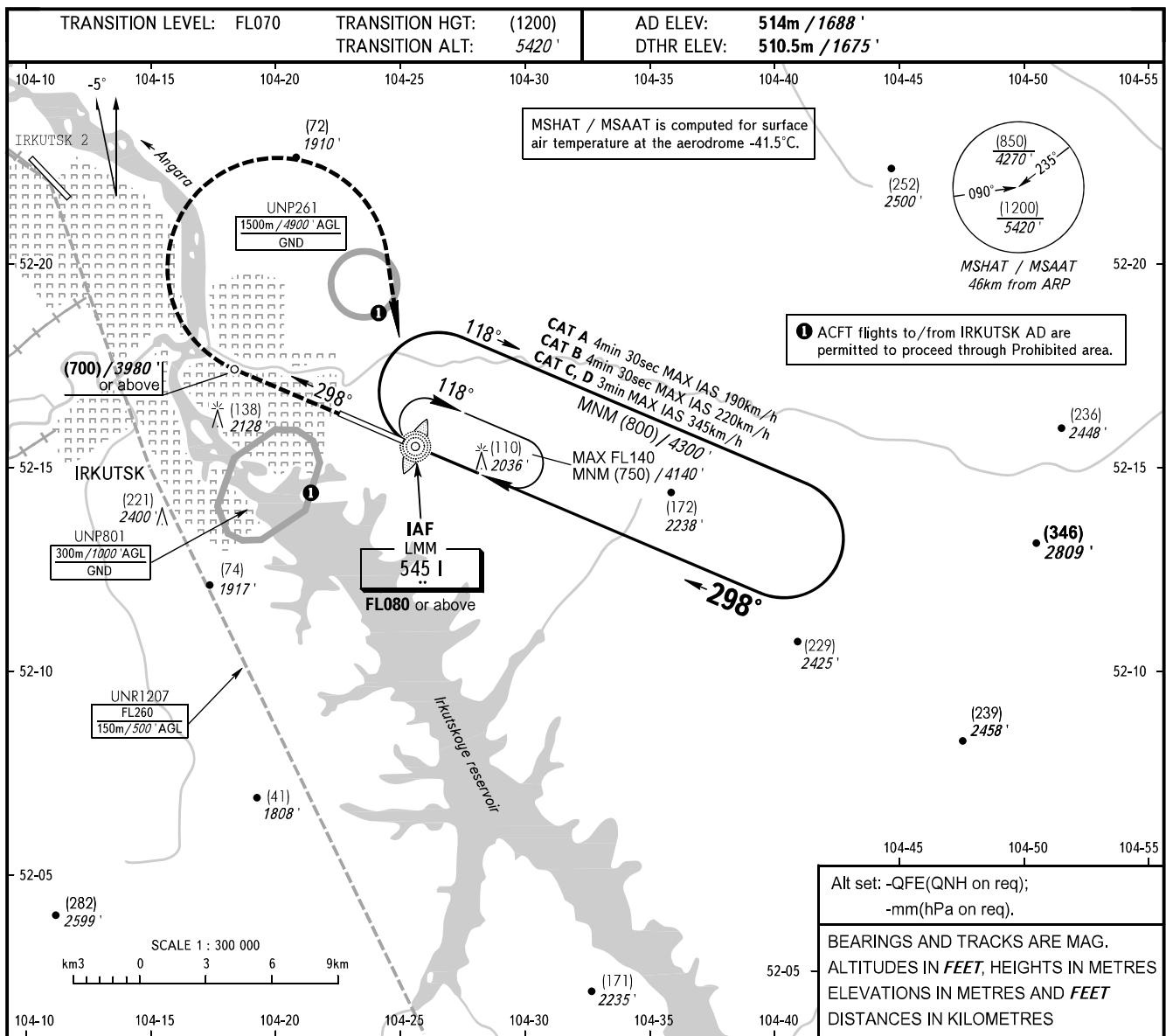


**INSTRUMENT
APPROACH
CHART - ICAO**

IRKUTSK, RUSSIA
IRKUTSK
NDB X RWY 30

RADAR	119.300
TOWER	118.100



OCA(H)		A	B	C	D
Straight-in Approach		935 (425) 3070' (1400')	990 (480) 3250' (1580')	990 (480) 3250' (1580')	990 (480) 3250' (1580')
	Circling	935 (425) 3070' (1400')	990 (480) 3250' (1580')	990 (480) 3250' (1580')	990 (480) 3250' (1580')

MISSED APPROACH
Climb straight ahead to (700) / 3980' or above, turn RIGHT to LMM I climbing to (900) / 4630' or above.

CHANGE: VAR, UNP801, TR MAG