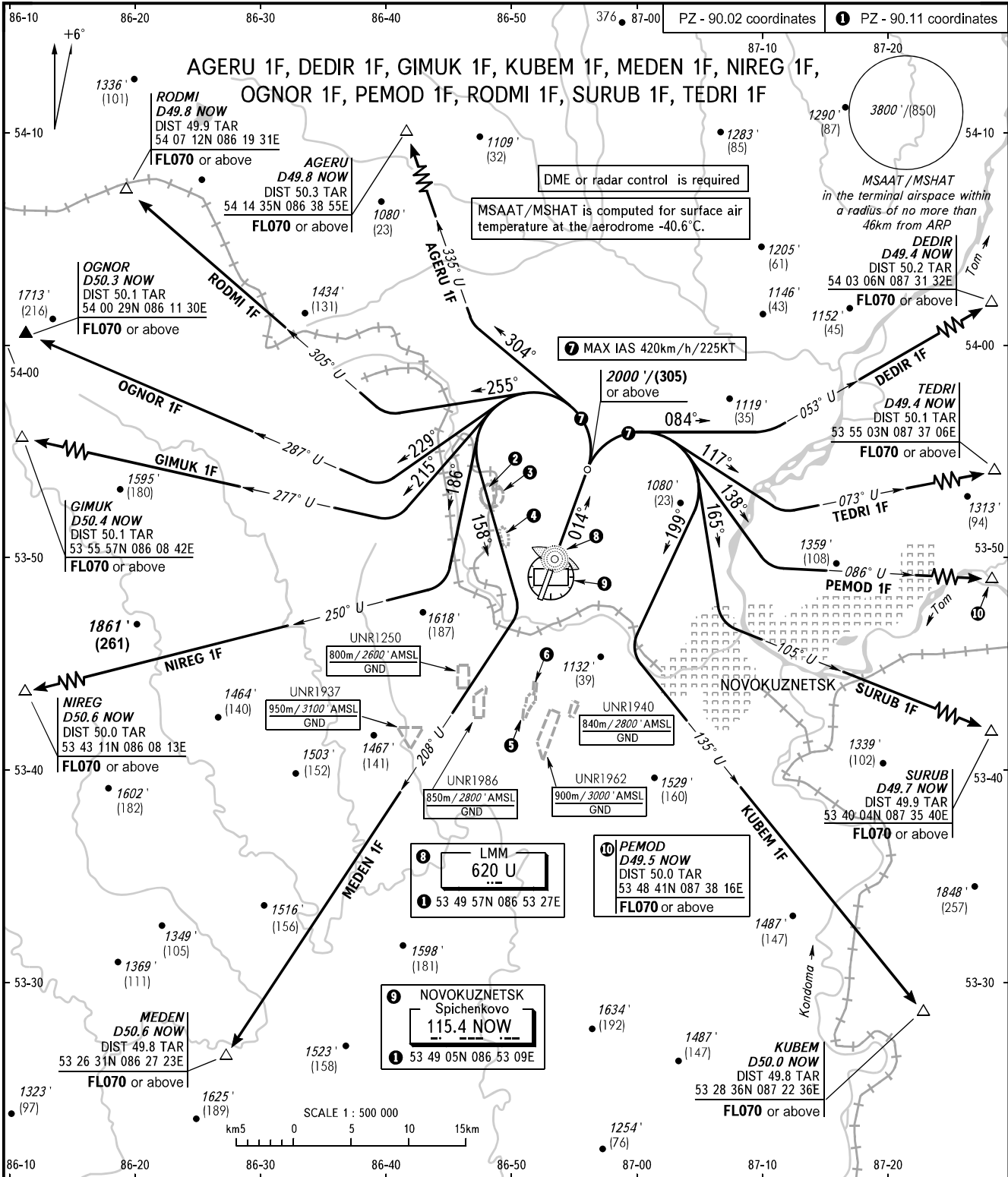


STANDARD DEPARTURE CHART
INSTRUMENT (SID) - ICAO

TRANSITION ALT: **4000'**
TRANSITION HGT: **(915)**

NOVOKUZNETSK, RUSSIA
SPICHENKOVO
RWY 01



CHANGE: WARNING

START **121.200**
APPROACH **118.600**

- ② UNR1249
750m/2500' AMSL
GND
- ③ UNR1277
670m/2200' AMSL
GND
- ④ UNR1145
900m/3000' AMSL
GND
- ⑤ UNR1939
900m/3000' AMSL
GND
- ⑥ UNR1987
900m/3000' AMSL
GND

WARNING:

1. Turn before passing LMM U is PROHIBITED.
2. MINIMUM CLIMB GRADIENT (due to airspace structure):
AGERU 1F: 3.8% up to FLO70;
DEDIR 1F: 3.5% up to FLO70.
3. AGERU 1F, GIMUK 1F, MEDEN 1F, NIREG 1F, OGNOR 1F, RODMI 1F require permission to overfly UNR1145, UNR1249 (during their activity) or ATS unit coordination.

BEARINGS AND TRACKS ARE MAGNETIC
ALTITUDES IN FEET, HEIGHTS IN METRES
ELEVATIONS IN FEET AND METRES
DISTANCES IN KILOMETRES

Alt set: -QNH(QFE on req);
-hPa(mm on req).