

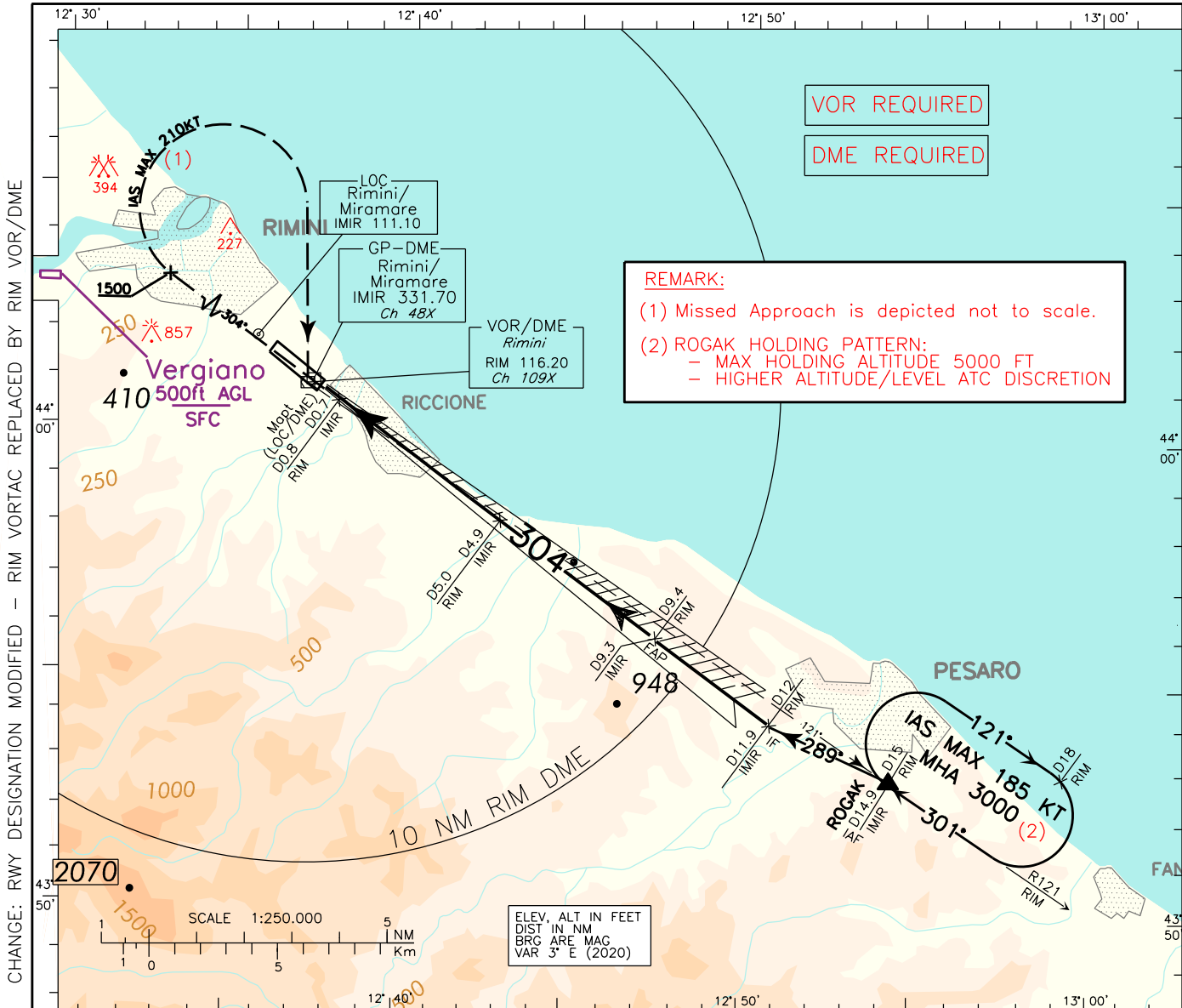
INSTRUMENT APPROACH CHART - ICAO

AERODROME ELEV 41

APP Bologna APP/Radar
TWR Rimini TWR

CH 118.150 (133.775)
131.225

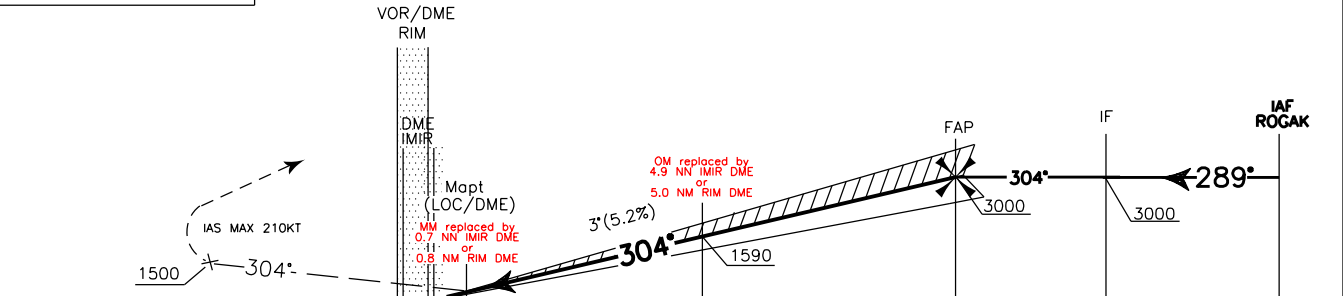
RIMINI/Miramare (LIPR)
ILS-Y RWY 30



CHANGE: RWY DESIGNATION MODIFIED - RIM VORTAC REPLACED BY RIM VOR/DME

TRANSITION ALT 6000
ILS RDH 16.5M
GP 3°

MISSED APPROACH: Proceed on TR 304° climbing to 3000FT. Passing 1500 FT turn right (IAS MAX 210KT) to RIM VOR/DME, to leave on RDL 121° inbound ROGAK holding pattern. Hold as published.



IMIR DME (NM)	THR ELEV 39	D0	D1	D2	D3	D4	D5	D6	D7	D8	D9	D10	D11	D12	D13	D14	D15
RIM DME (NM)		D0	D1	D2	D3	D4	D5	D6	D7	D8	D9	D10	D11	D12	D13	D14	D15

STRAIGHT IN APPROACH	OCA (OCH)	A	B	C	D
	ILS	280 (241)	292 (253)	300 (261)	311 (272)
	LOC/DME	650 (609)			
CIRCLING (3)		770 (729)		870 (829)	

REMARK (3):
Circling procedure allowed East of RWY only.

NOT ALLOWED

GS	FT/MIN	IMIR DME	ALT (HGT)
70	372	D 9	2900(2861)
90	478	D 8	2585(2546)
110	584	D 7	2265(2226)
130	690	D 6	1945(1906)
150	797	D 5	1630(1591)
170	903	D 4	1310(1271)
190	1009	D 3	990 (951)
210	1115	D 2	675 (636)

