

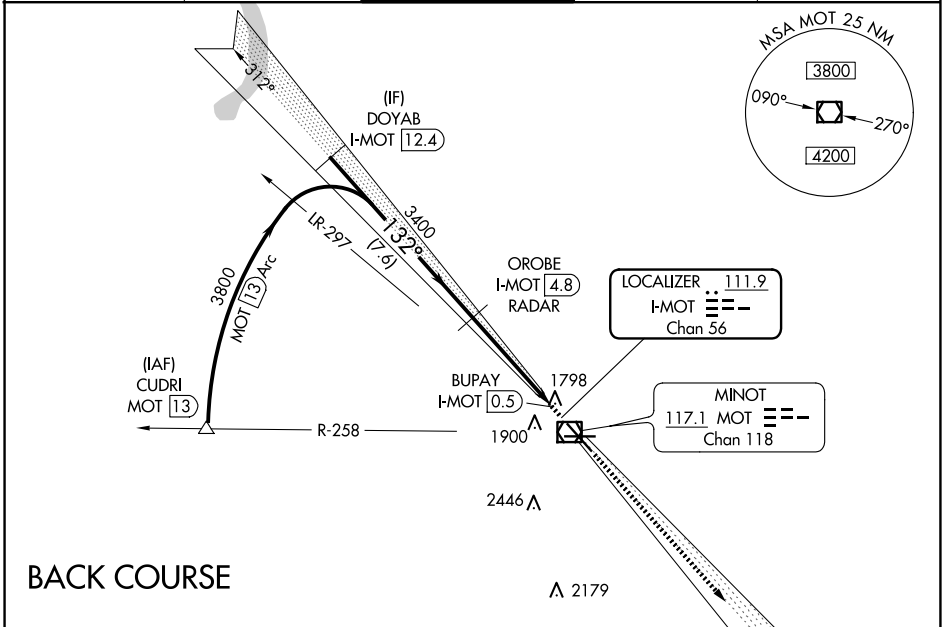
LOC/DME I-MOT 111.9 Chan 56	APP CRS 132°	Rwy ldg 7700 TDZE 1702 Apt Elev 1716
---	------------------------	---

LOC BC RWY 13

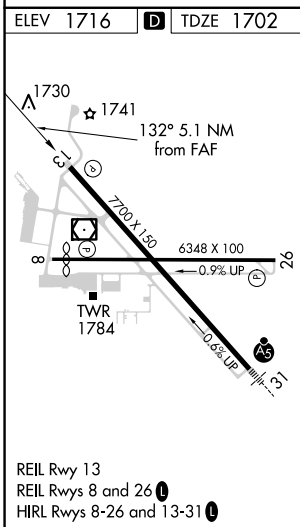
MINOT INTL (MOT)

DME required		MISSED APPROACH: Climb to 3700 on I-MOT SE course to HEKTA/I-MOT 13.6 DME/RADAR and hold.	
--------------	--	--	--

ASOS 118.725	MINOT APP CON ★ 119.6 363.8	MAGIC CITY TOWER ★ 118.2 (CTAF) 0 251.125	GND CON 121.9	UNICOM 122.95
------------------------	---------------------------------------	---	-------------------------	-------------------------



BACK COURSE



Disregard glide slope indications. Use I-MOT DME when on LOC course.		3700 ↑ I-MOT SE crs	HEKTA I-MOT 13.6
DOYAB I-MOT 12.4	OROB I-MOT 4.8 RADAR	3400 3.05° TCH 49	BUPAY I-MOT 0.5
3800	7.6 NM	4.3 NM	0.8
CATEGORY	A	B	C
S-LOC13	2060-1 358 (400-1)		
CIRCLING	2200-1 484 (500-1)	2240-1 524 (600-1)	2800-3 1084 (1100-3)

NC-1, 20 MAR 2025 to 17 APR 2025

NC-1, 20 MAR 2025 to 17 APR 2025