

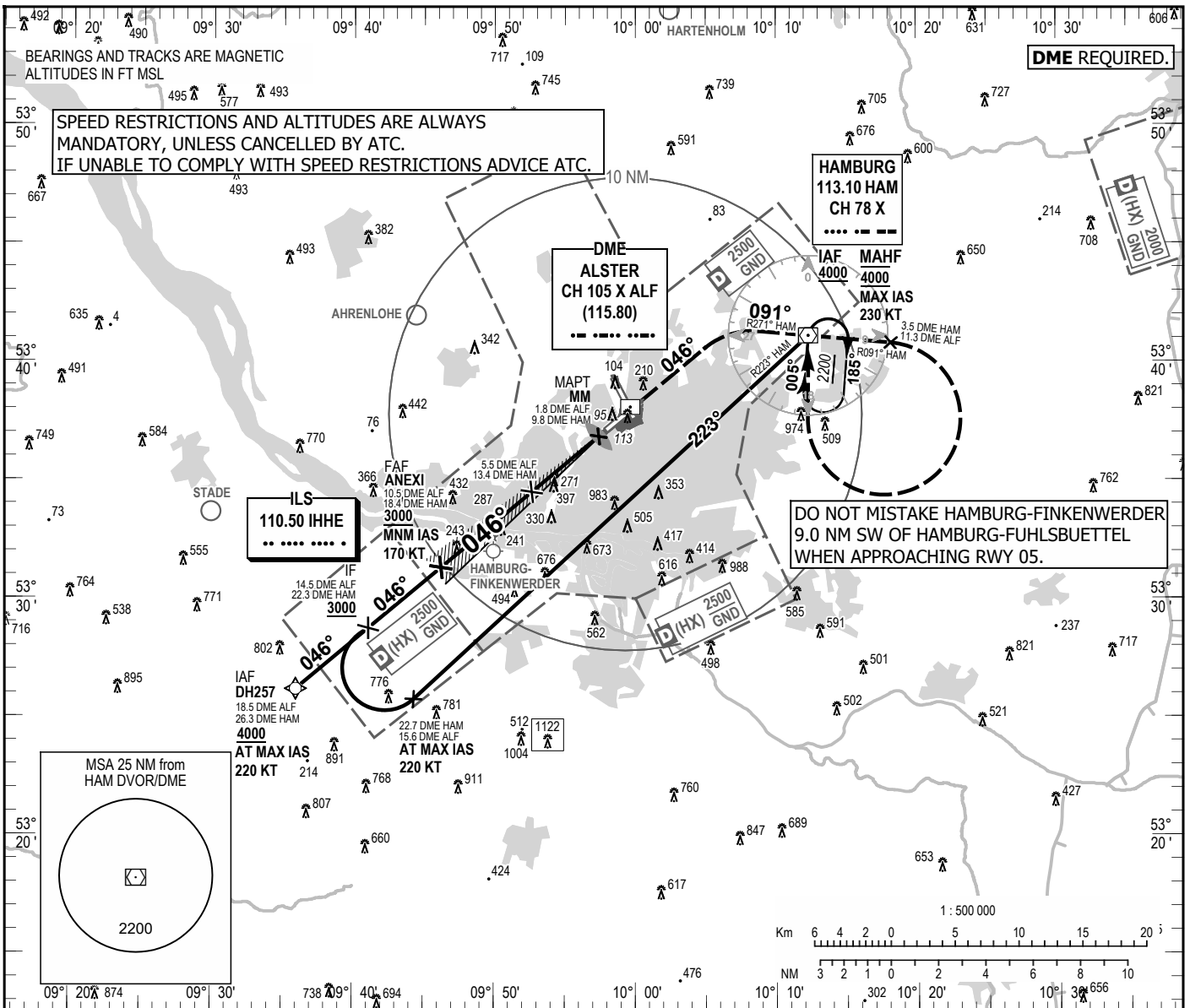
INSTRUMENT  
APPROACH  
CHART - ICAO

VAR 4° E

ELEV 53  
OCH RELATED TO  
THR 05 ELEV 32

HAMBURG ATIS	124.325	HAMBURG GROUND	121.805
BREMEN RADAR	120.540	HAMBURG APRON	121.980
HAMBURG ARRIVAL	118.205	HAMBURG APRON	121.705
HAMBURG TOWER	126.855		

HAMBURG  
ILS or LOC  
RWY 05



**DME REQUIRED.**

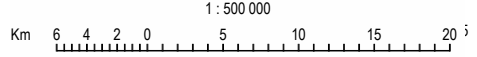
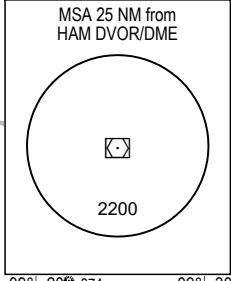
SPEED RESTRICTIONS AND ALTITUDES ARE ALWAYS MANDATORY, UNLESS CANCELLED BY ATC. IF UNABLE TO COMPLY WITH SPEED RESTRICTIONS ADVISE ATC.

HAMBURG 113.10 HAM CH 78 X  
.....

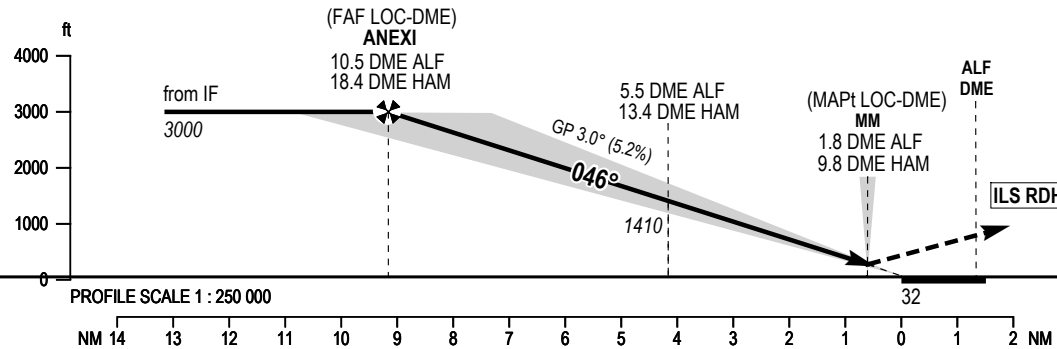
DME ALSTER CH 105 X ALF (115.80)  
- . - . - . - . - . - .

ILS 110.50 IHHE  
.....

DO NOT MISTAKE HAMBURG-FINKENWERDER 9.0 NM SW OF HAMBURG-FUHLBUETTEL WHEN APPROACHING RWY 05.



**MISSED APPROACH PROCEDURE**  
Climb on course 046° to intercept and follow R271 HAM to HAM. Continue on R091 HAM to 3.5 DME HAM/ 11.3 DME ALF; RT, direct HAM climbing 4000. Max. IAS 230 Kts.



OCA (OCH)	A	B	C	D	DL
ILS/DME CAT I	227 (195)	237 (205)	264 (232)	274 (242)	274 (242)
LOC-DME	520 (490)	520 (490)	520 (490)	520 (490)	

DIST DME ALF	10	9	8	7	6	5	4	3
DIST THR	8.7	7.7	6.7	5.7	4.7	3.7	2.7	1.7
ALTITUDE	2850	2530	2210	1890	1570	1250	940	620

LOC-DME: Timing not authorized for defining the MAPt.

GS	kt	80	100	120	140	160	180
ANEXI - THR (9.2 NM)	MIN:SEC	6:52	5:30	4:35	3:56	3:26	3:03
Rate of descent (5.2%)	ft/MIN	420	530	640	740	850	960

Correction: Communications and missed approach revised.