

MILTON, FLORIDA

ILS Z or RNAV (GPS) RWY 14

LOC/DME I-NSE 111.75 Chan 54(Y)	APCH CRS 139°	Rwy Idg TDZE Arprt Elev 6001 199 199
---	-------------------------	--

[USN]

WHITING FLD NAS - NORTH (KNSE)

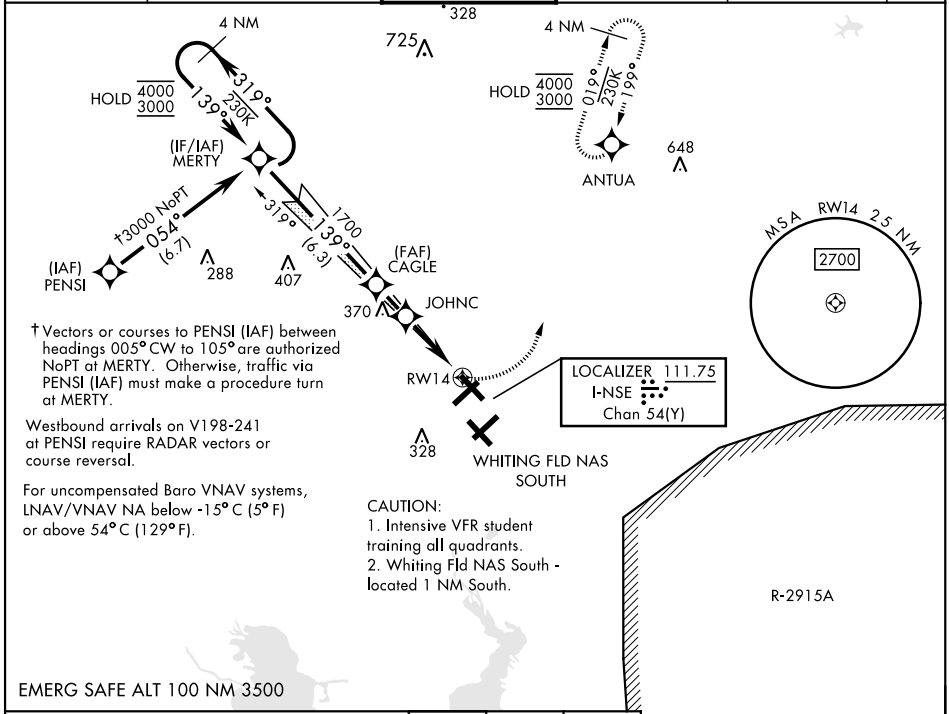
RNAV1-GPS for ILS.
RNP APCH for LNAV/VNAV, LNAV.



MISSED APPROACH: Climb to 700, then climbing left turn to 3000 direct to ANTUA and hold. Continue climb in hold. Contact Pensacola APP CON.

- * When ALS inop, increase vis to ¾ mile.
- ** When ALS inop, increase vis to 1 mile.
- *** Circling not authorized S of Rws 5 and 32.

ATIS ★ 290.325	PENSACOLA APP CON 127.35 278.8	NORTH WHITING TOWER ★ 121.4 306.925	GND CON 251.15	CLNC DEL 257.775	ASR
--------------------------	--	---	--------------------------	----------------------------	-----



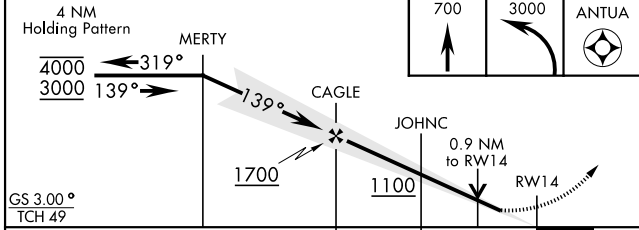
† Vectors or courses to PENS (IAF) between headings 005° CW to 105° are authorized NoPT at MERTY. Otherwise, traffic via PENS (IAF) must make a procedure turn at MERTY.

Westbound arrivals on V198-241 at PENS require RADAR vectors or course reversal.

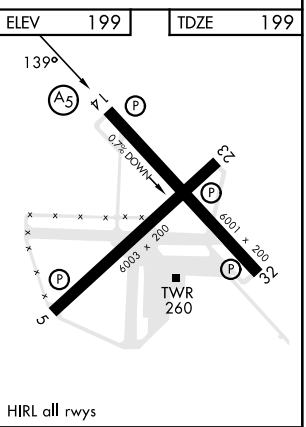
For uncompensated Baro VNAV systems, LNAV/VNAV NA below -15° C (5° F) or above 54° C (129° F).

- CAUTION:
1. Intensive VFR student training all quadrants.
 2. Whiting Fld NAS South - located 1 NM South.

EMERG SAFE ALT 100 NM 3500



CATEGORY	A	B	C	D
S-ILS 14*	399-½	200	(200-½)	
LNAV/VNAV DA*	449-½	250	(300-½)	
LNAV MDA**	520-½	321	(400-½)	
CIRCLING***	560-1 361 (400-1)	660-1 461 (500-1)	660-1½ 461 (500-1½)	760-2 561 (600-2)



SE-3, 20 MAR 2025 to 17 APR 2025

SE-3, 20 MAR 2025 to 17 APR 2025

MILTON, FLORIDA

Amtd 6 18APR24

30°43'N-87°01'W

WHITING FLD NAS - NORTH (KNSE)

ILS Z or RNAV (GPS) RWY 14