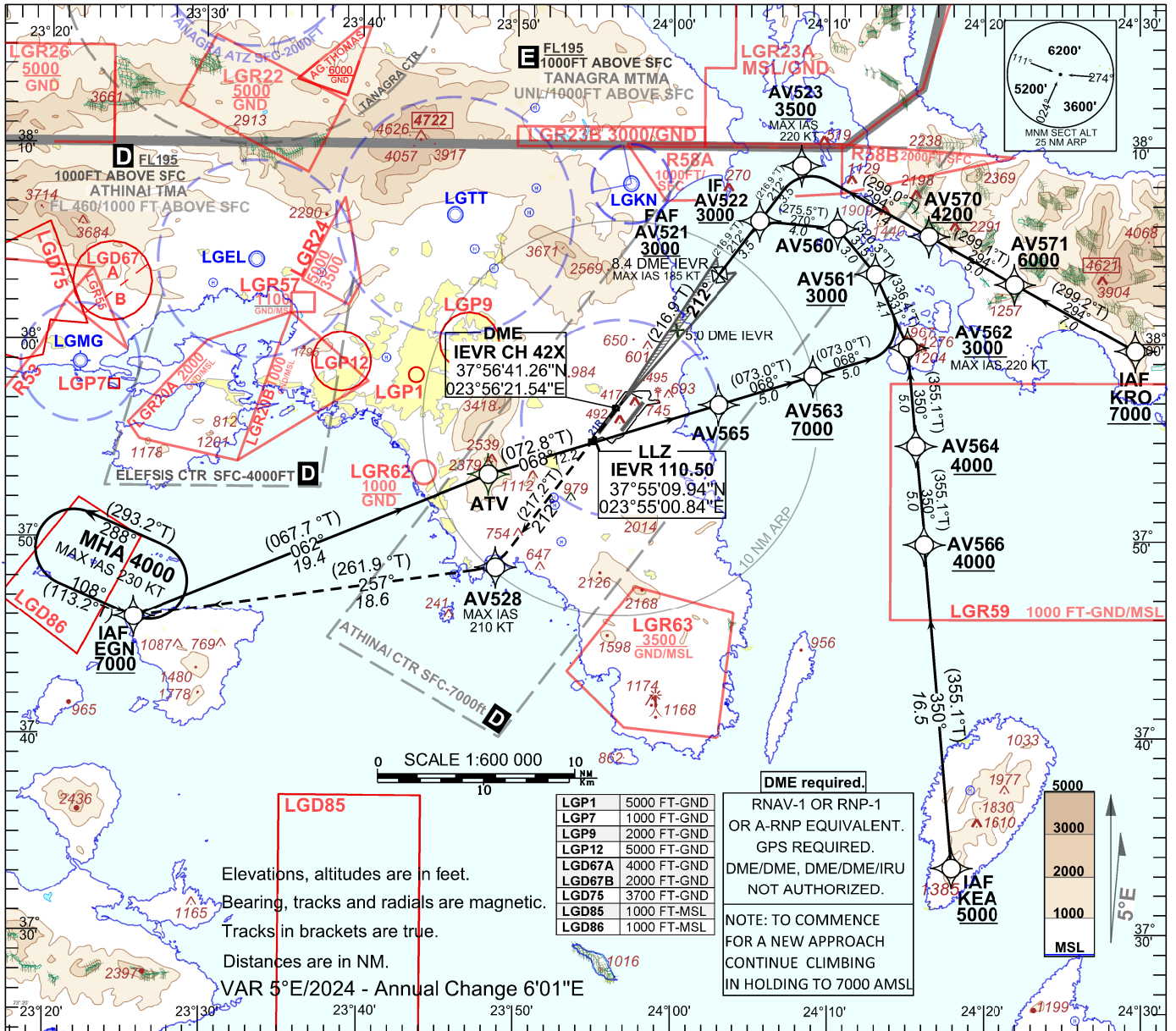


ATIS 136.125	ARRIVAL WEST 132.975	TOWER WEST 136.275
	ARRIVAL EAST 126.575	TOWER EAST 118.625

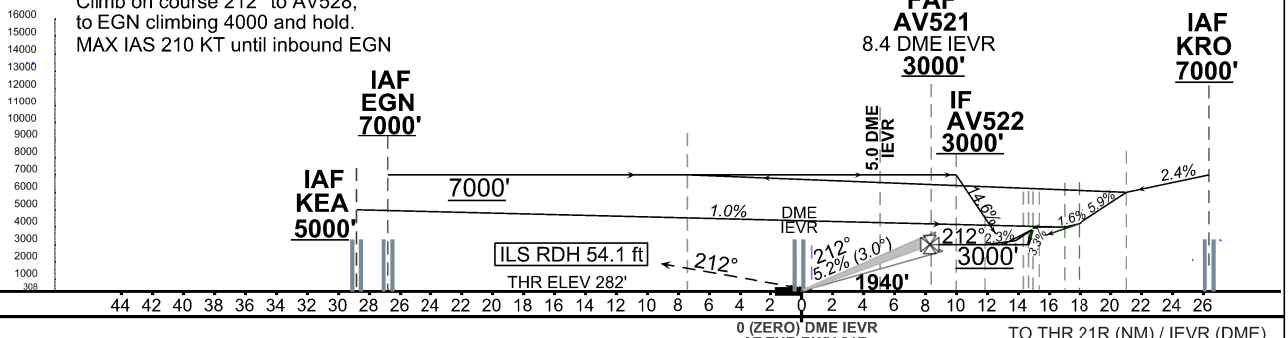


LGP1	5000 FT-GND
LGP7	1000 FT-GND
LGP9	2000 FT-GND
LGP12	5000 FT-GND
LGD67A	4000 FT-GND
LGD67B	2000 FT-GND
LGD75	3700 FT-GND
LGD85	1000 FT-MSL
LGD86	1000 FT-MSL

DME required.
RNAV-1 OR RNP-1
OR A-RNP EQUIVALENT.
GPS REQUIRED.
DME/DME, DME/DME/IRU
NOT AUTHORIZED.
NOTE: TO COMMENCE
FOR A NEW APPROACH
CONTINUE CLIMBING
IN HOLDING TO 7000 AMSL

MISSED APPROACH: TRANSITION ALTITUDE 9000 ft

Climb on course 212° to AV528;
to EGN climbing 4000 and hold.
MAX IAS 210 KT until inbound EGN



Distance IEVR DME	2.0	3.0	4.0	5.0	6.0	7.0	8.0
Altitude 5.2% Approach	980	1300	1620	1940	2260	2570	2890
GS (kt)	100	135	160	185			
AV521 - THR (8.4 NM) (MIN:SEC)	5:01	3:43	3:08	2:43			
Rate of descent (5.2%) (ft/min)	530	710	850	980			

ILS X CAT I & II RWY 21R

INITIAL APCH FROM EGN												
Sequence Number	Waypoint Identifier	Coordinates	Path Terminator	Fly Over	Distance (NM)	Course °M (°T)	Turn Direction	Altitude (FT/FL)	Speed Limit (kt)	Navigation Specification	RNP	REMARKS
010	EGN	N 37°45'58.3000" E 023°25'34.8700"	IF	-	-	-	-	+7000	-	RNP APCH	1.0	IAF
020	ATV	N 37°53'19.2400" E 023°48'16.1900"	TF	-	19.4	062 (067.7)	-	-	-	RNP APCH	1.0	
030	AV565	N 37°56'54.1356" E 024°02'58.7791"	TF	-	12.2	068 (072.8)	-	-	-	RNP APCH	1.0	
040	AV563	N 37°58'21.8382" E 024°09'01.5829"	TF	-	5.0	068 (073.0)	-	+7000	-	RNP APCH	1.0	
050	AV562	N 37°59'49.2293" E 024°15'04.6262"	TF	-	5.0	068 (073.0)	-	+3000	-220	RNP APCH	1.0	
060	AV561	N 38°03'34.4222" E 024°13'00.4549"	TF	-	4.1	331 (336.4)	-	+3000	-	RNP APCH	1.0	
070	AV560	N 38°05'53.0326" E 024°10'34.7843"	TF	-	3.0	315 (320.3)	-	-	-	RNP APCH	1.0	
080	AV522	N 38°06'15.8535" E 024°05'35.1421"	TF	-	4.0	270 (275.5)	-	+3000	-	RNP APCH	1.0	IF
INITIAL APCH FROM KEA												
Sequence Number	Waypoint Identifier	Coordinates	Path Terminator	Fly Over	Distance (NM)	Course °M (°T)	Turn Direction	Altitude (FT/FL)	Speed Limit (kt)	Navigation Specification	RNP	REMARKS
010	KEA	N 37°33'25.7900" E 024°17'55.3200"	IF	-	-	-	-	+5000	-	RNP APCH	1.0	IAF
020	AV566	N 37°49'50.7476" E 024°16'09.3826"	TF	-	16.5	350 (355.1)	-	+4000	-	RNP APCH	1.0	
030	AV564	N 37°54'49.9918" E 024°15'37.0408"	TF	-	5.0	350 (355.1)	-	+4000	-	RNP APCH	1.0	
040	AV562	N 37°59'49.2293" E 024°15'04.6262"	TF	-	5.0	350 (355.1)	-	+3000	-220	RNP APCH	1.0	
050	AV561	N 38°03'34.4222" E 024°13'00.4549"	TF	-	4.1	331 (336.4)	-	+3000	-	RNP APCH	1.0	
060	AV560	N 38°05'53.0326" E 024°10'34.7843"	TF	-	3.0	315 (320.3)	-	-	-	RNP APCH	1.0	
070	AV522	N 38°06'15.8535" E 024°05'35.1421"	TF	-	4.0	270 (275.5)	-	+3000	-	RNP APCH	1.0	IF

INITIAL APCH FROM KRO												
Sequence Number	Waypoint Identifier	Coordinates	Path Terminator	Fly Over	Distance (NM)	Course °M (°T)	Turn Direction	Altitude (FT/FL)	Speed Limit (kt)	Navigation Specification	RNP	REMARKS
010	KRO	N 37°59'38.9000" E 024°29'41.6700"	IF	-	-	-	-	+7000	-	RNP APCH	1.0	IAF
020	AV571	N 38°03'03.5982" E 024°21'57.3909"	TF	-	7.0	294 (299.2)	-	+6000	-	RNP APCH	1.0	
030	AV570	N 38°05'29.4977" E 024°16'25.3234"	TF	-	5.0	294 (299.1)	-	+4200	-	RNP APCH	1.0	
040	AV523	N 38°09'03.8232" E 024°08'15.7658"	TF	-	7.4	294 (299.0)	-	+3500	-220	RNP APCH	1.0	
050	AV522	N 38°06'15.8535" E 024°05'35.1421"	TF	-	3.5	212 (217.1)	-	+3000	-	RNP APCH	1.0	IF
FINAL APCH												
Sequence Number	Waypoint Identifier	Coordinates	Path Terminator	Fly Over	Distance (NM)	Course °M (°T)	Turn Direction	Altitude (FT/FL)	Speed Limit (kt)	Navigation Specification	RNP	REMARKS
010	AV522	N 38°06'15.8535" E 024°05'35.1421"	IF	-	-	-	-	+3000	-	RNP APCH	1.0	IF
020	AV521	N 38°03'29.3719" E 024°02'56.4230"	CF	-	3.5	212 (217.0)	-	+3000	-185	-	-	FAF
030	RW21R	N 37°56'48.1315" E 023°56'34.1933"	CF	Y	8.4	212 (216.9)	-	-	-	-	-	
MISSED APCH												
Sequence Number	Waypoint Identifier	Coordinates	Path Terminator	Fly Over	Distance (NM)	Course °M (°T)	Turn Direction	Altitude (FT/FL)	Speed Limit (kt)	Navigation Specification	RNP	REMARKS
010	AV528	N 37°48'36.9341" E 023°48'45.0206"	CF	-	10.3	212 (217.2)	-	-	-210	RNP APCH	1.0	
020	EGN	N 37°45'58.3000" E 023°25'34.8700"	TF	-	18.6	257 (261.9)	-	-	-	RNP APCH	1.0	
RNAV HOLDING IDENTIFICATION												
Sequence Number	Waypoint Identifier	Coordinates	Path Terminator	Fly Over	Distance (NM)	Course °M (°T)	Turn Direction	Altitude (FT/FL)	Speed Limit (kt)	Navigation Specification	RNP	REMARKS
010	EGN	N 37°45'58.3000" E 023°25'34.8700"	HM	Y	-	108 (113.2)	L	+4000	-230	RNAV 1	1.0	
NOTE: TO COMMENCE FOR A NEW APPROACH CONTINUE CLIMBING IN HOLDING TO 7000 AMSL.												