

GOLDSBORO, NORTH CAROLINA

TACAN Y RWY 26

TACAN GSB Chan 112	APCH CRS 261°	Rwy ldg 11,760 TDZE 109 Arprt Elev 109
---------------------------	----------------------	---

[USAF]

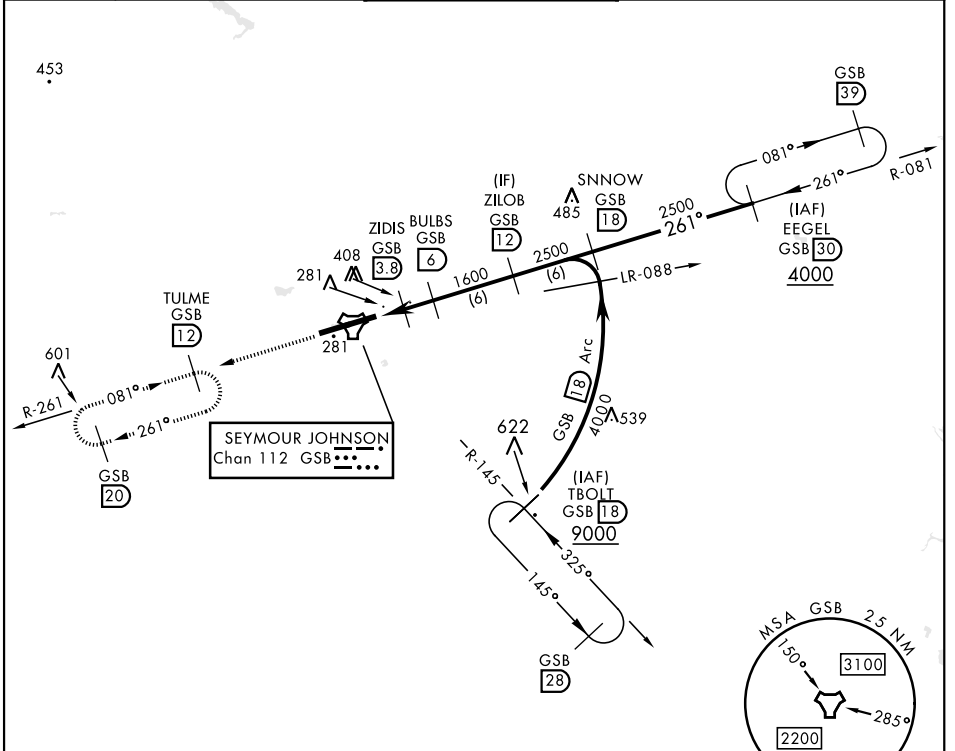
SEYMOUR JOHNSON AFB (KGSB)

▼ * When ALS inop, increase CAT AB RVR to 55, vis to 1 mile, CAT CDE vis to 1½ miles.
 ** Circling N of Rwy 8-26 not authorized.



MISSED APPROACH: Climb to 2200 via GSB R-261 to TULME and hold.

ATIS ★ 317.625	APP CON 123.7 290.9 (258°-110°) 119.7 273.6 (111°-257°)	TOWER ★ 126.25 370.875	GND CON 132.45 275.8	CLNC DEL 128.025 270.8
-----------------------	--	-------------------------------	-----------------------------	-------------------------------

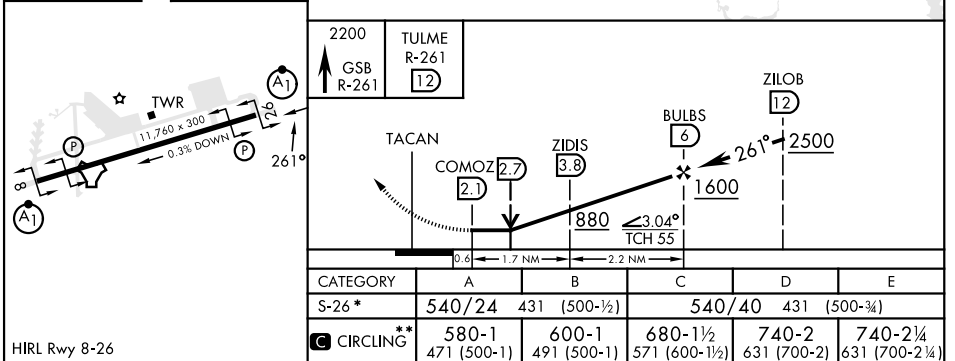


SE-2, 20 MAR 2025 to 17 APR 2025

SE-2, 20 MAR 2025 to 17 APR 2025

EMERG SAFE ALT 100 NM 3700

ELEV 109	TDZE 109
----------	----------



GOLDSBORO, NORTH CAROLINA

35° 20'N-77° 58'W

SEYMOUR JOHNSON AFB (KGSB)

Amtd 8 03NOV22

TACAN Y RWY 26