

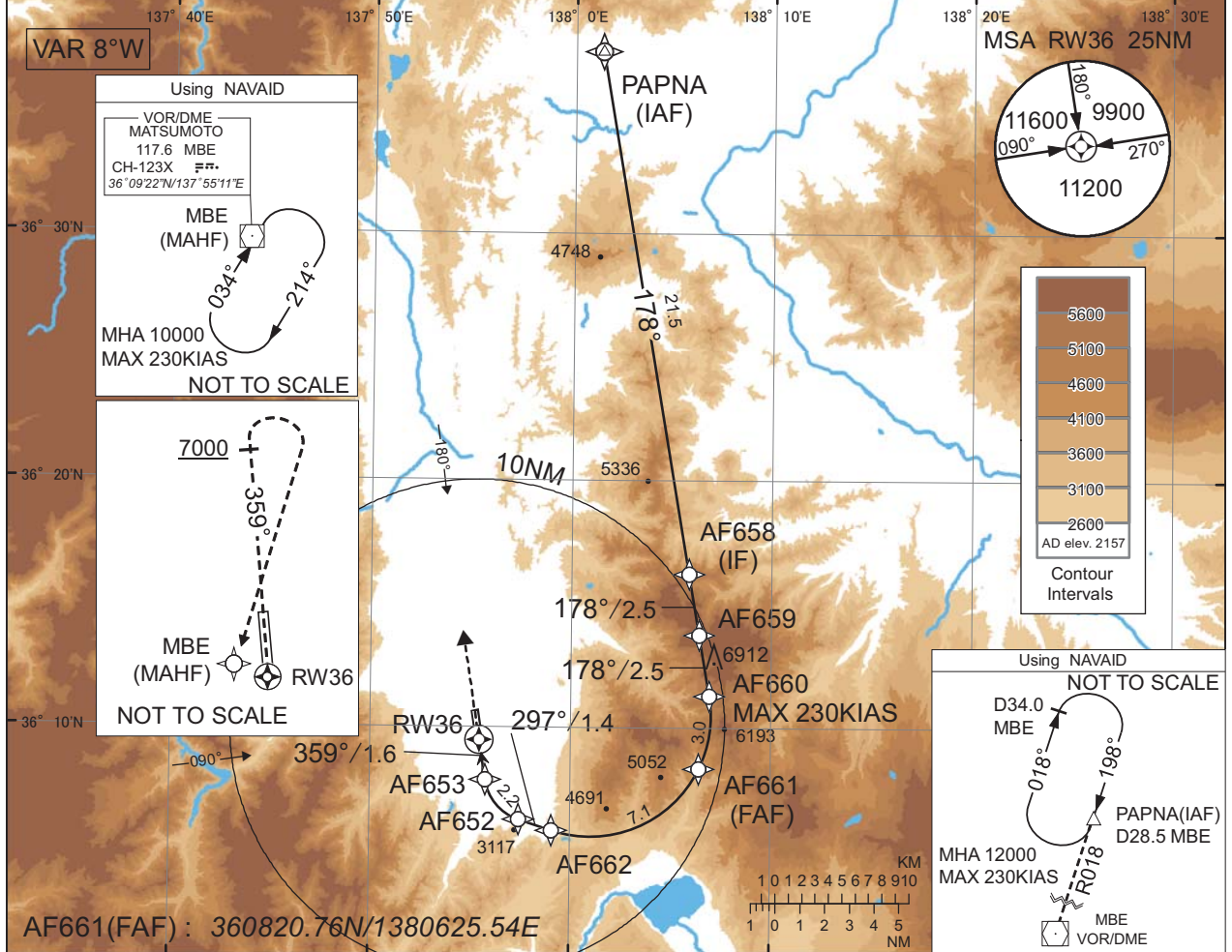
INSTRUMENT APPROACH CHART

RJAF / MATSUMOTO

RNP Y RWY36(AR)

<b>KOBE CONTROL</b> 132.45 - 125.6 304.4 - 317.1	<b>RNP AR</b> RF required.	<b>MATSUMOTO RADIO</b> 118.65 AFIS provided by New Chitose Airport Office	<b>NO RADAR</b>
--	-------------------------------	--	-----------------

For uncompensated Baro-VNAV systems, procedure not authorized below -15°C / above 45°C

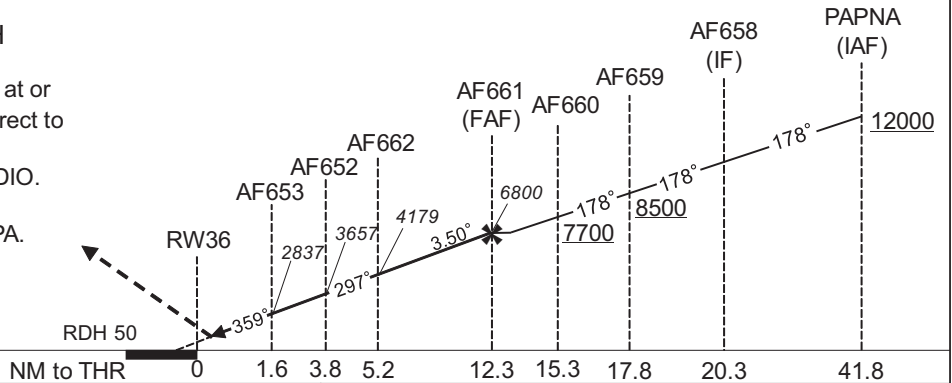


CHANGE : ATC call sign (TOKYO CONTROL → KOBE CONTROL).

**MISSED APPROACH**

From RW36 on track 359°, at or above 7000FT turn right, direct to MBE and hold at 10000FT. Contact MATSUMOTO RADIO.  
PAPI not coincident with VPA.

PAPI not coincident with VPA.



MINIMA	THR elev. 2182		AD elev. 2157	
	RNP 0.20		RNP 0.30	
CAT	DA(H)	CMV	DA(H)	CMV
A	-	-	-	-
B	-	-	-	-
C	2482(300)	1800	2551(369)	1800
D	-	-	-	-

**Authorization Required**

MINIMA with Missed APCH climb gradient of 2.5% are not established.

## INSTRUMENT APPROACH CHART

RJAF / MATSUMOTO

RNP Y RWY36(AR)

Coding Table

Serial Number	Path Descriptor	Waypoint Identifier	Fly Over	Course °M(°T)	Magnetic Variation	Distance (NM)	Turn Direction	Altitude (FT)	Speed (KIAS)	VPA/RDH (°/FT)	RNP Value
001	IF	PAPNA	-	-	-8.2	-	-	+12000	-	-	-
002	TF	AF658	-	178 (170.2)	-8.2	21.5	-	-	-	-	1.0
003	TF	AF659	-	178 (170.3)	-8.2	2.5	-	+8500	-	-	0.3
004	TF	AF660	-	178 (170.3)	-8.2	2.5	-	+7700	-230	-	0.3
005	RF Center: AFRF4 r=4.89NM	AF661	-	-	-8.2	3.0	R	6800	-	-	0.3
006	RF Center: AFRF4 r=4.89NM	AF662	-	-	-8.2	7.1	R	4179	-	-3.50	0.2 0.3
007	TF	AF652	-	297 (288.4)	-8.2	1.4	-	3657	-	-3.50	0.2 0.3
008	RF Center: AFRF2 r=2.02NM	AF653	-	-	-8.2	2.2	R	2837	-	-3.50	0.2 0.3
009	TF	RW36	Y	359 (351.1)	-8.2	1.6	-	2232	-	-3.50/50	0.2 0.3
010	FA	-	-	359 (351.1)	-8.2	-	-	+7000	-	-	1.0
011	DF	MBE	-	-	-8.2	-	R	10000	-	-	1.0

Waypoint Coordinates

Waypoint Identifier	Coordinates	RF Arc Center Identifier	Coordinates
PAPNA	363721.74N / 1380122.92E	AFRF4	361027.73N / 1380059.34E
AF658	361613.48N / 1380553.24E	AFRF2	360810.39N / 1375813.97E
AF659	361345.52N / 1380624.64E		
AF660	361117.56N / 1380656.02E		
AF661	360820.76N / 1380625.54E		
AF662	360549.12N / 1375905.80E		
AF652	360615.53N / 1375727.24E		
AF653	360751.55N / 1375546.68E		
RW36	360928.29N / 1375527.85E		
MBE	360921.51N / 1375511.34E		

CHANGE : PROC renamed.