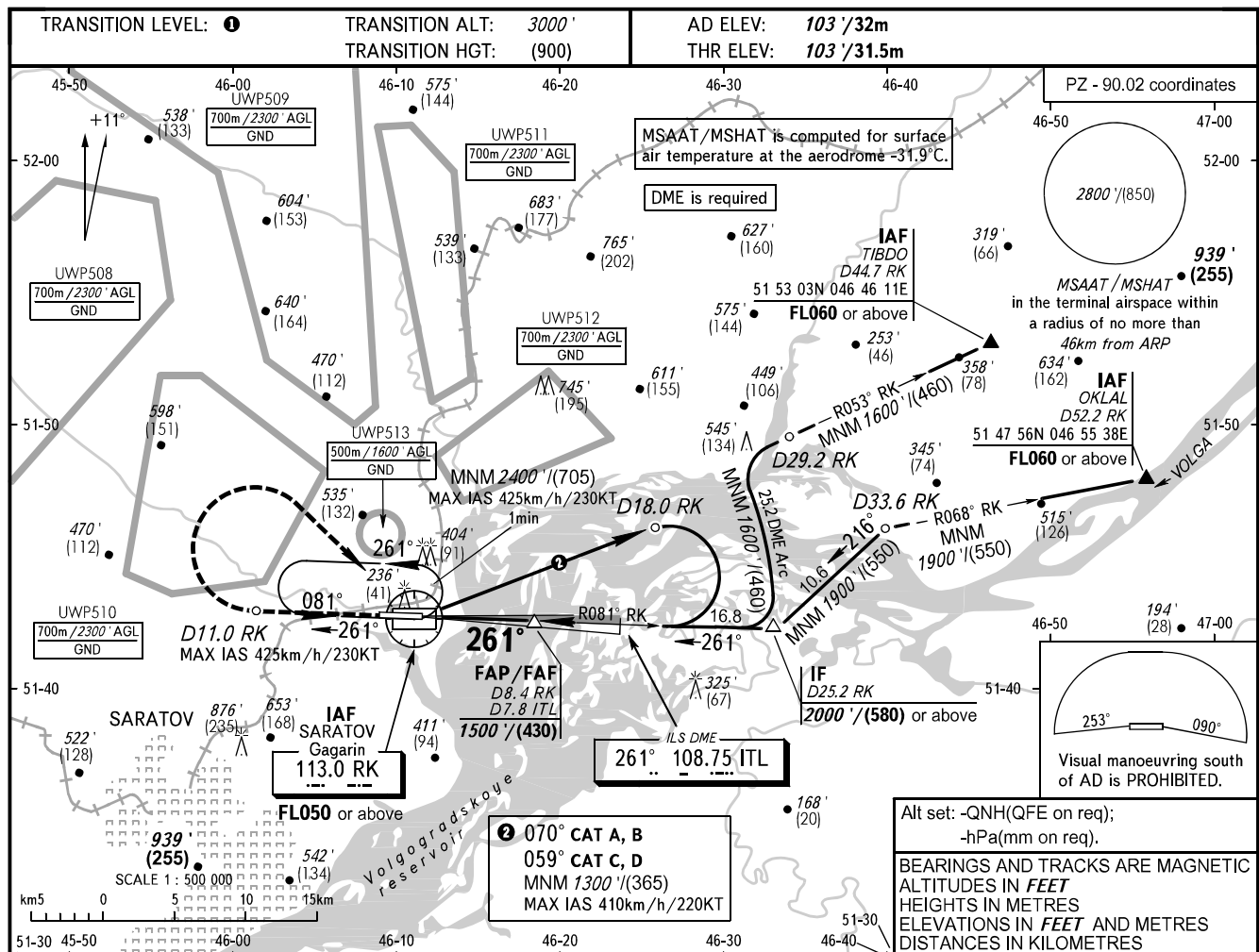


**INSTRUMENT
APPROACH
CHART - ICAO**

GAGARIN RADAR **130.300**
GAGARIN TOWER **122.850**

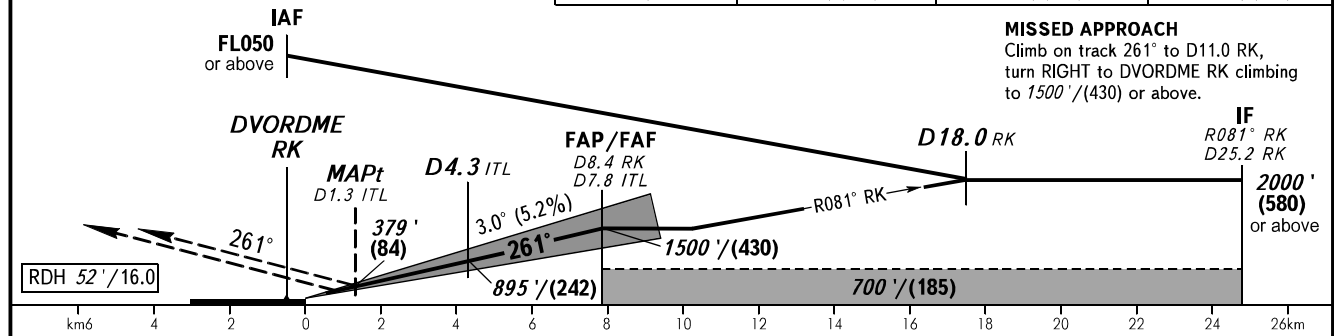
SARATOV, RUSSIA
GAGARIN
ILS Y CAT I/II, LOC Y RWY 26



070° CAT A, B
059° CAT C, D
MNM 1300'/(365)
MAX IAS 410km/h/220KT

Alt set: -QNH(QFE on req);
-hPa(mm on req).
BEARINGS AND TRACKS ARE MAGNETIC
ALTITUDES IN FEET
HEIGHTS IN METRES
ELEVATIONS IN FEET AND METRES
DISTANCES IN KILOMETRES

DME ITL	2.0	4.0	6.0
ALTITUDE/HEIGHT	499'/(121)	843'/(226)	1187'/(331)



OCA(H)		A	B	C	D
Straight-in Approach	CAT I	244' (141') (43)	252' (149') (46)	262' (159') (49)	272' (169') (52)
	CAT II	155' (52') (16)	164' (61') (19)	177' (74') (23)	189' (86') (27)
	LOC	400' (300') (90)	400' (300') (90)	400' (300') (90)	400' (300') (90)
Circling		650' (540') (165)	700' (600') (185)	1020' (920') (280)	1020' (920') (280)

TRANSITION LEVEL:
- FL040 when QNH is 1013 hPa (760mm mercury column) or above;
- FL050 when QNH is 977 hPa (733mm mercury column) or above, but less than 1013 hPa (760mm mercury column);
- FL060 when QNH is less than 977 hPa (733mm mercury column).

WARNING:
1. MAPt at D1.3 ITL.
Timing not authorized for defining MAPt.
2. DME ITL reads zero at RWY 26 THR.

GROUND SPEED	km/h	150	180	210	240	270	300	330	360	390
	kt	81	97	113	130	146	162	178	194	211
RATE OF DESCENT	m/s	2.2	2.6	3.1	3.5	3.9	4.4	4.8	5.2	5.7
	ft/min	433	512	610	689	768	866	945	1024	1122