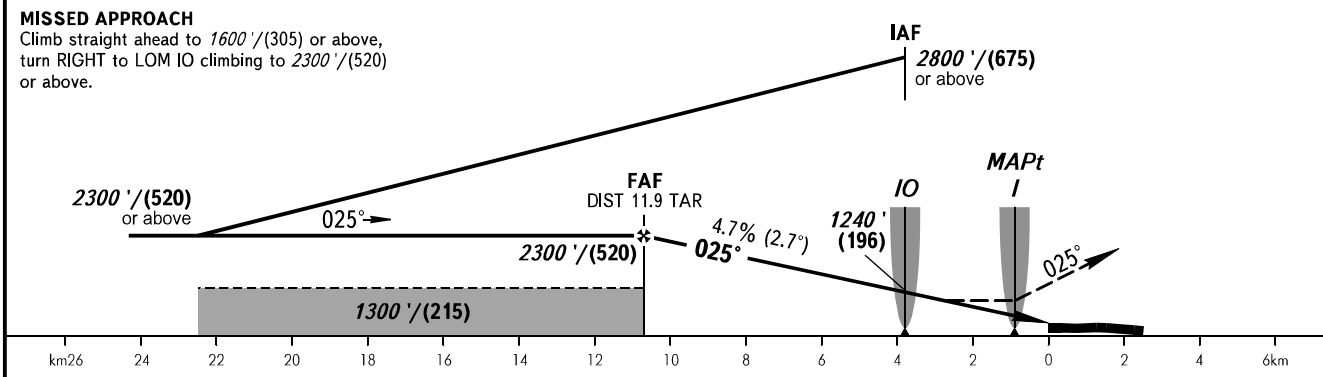
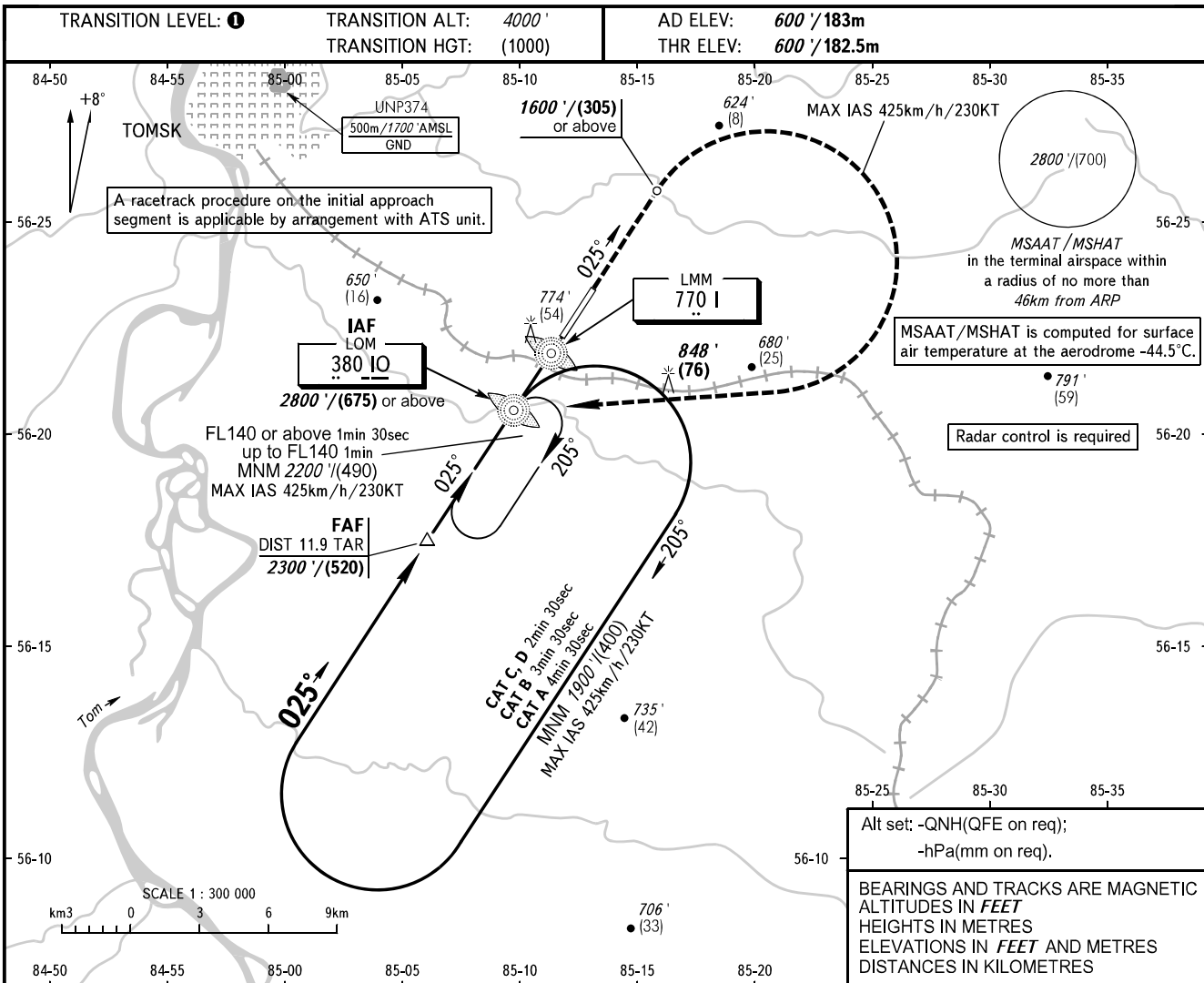


**INSTRUMENT
APPROACH
CHART-ICAO**

TOWER 127.300

**TOMSK, RUSSIA
BOGASHEVO
NDB Z RWY 03**



OCA(H)		A	B	C	D	1 TRANSITION LEVEL: - FL050 when QNH is 1013 hPa (760mm mercury column) or above; - FL060 when QNH is 977 hPa (733mm mercury column) or above, but less than 1013 hPa (760mm mercury column); - FL070 when QNH is less than 977 hPa (733mm mercury column). WARNING: 1. MAPt at LMM I. Timing not authorized for defining MAPt. 2. DIST indication of TAR is given from ARP.				
Straight-in Approach		1020' (420') (130)	1020' (420') (130)	1020' (420') (130)	1020' (420') (130)					
Circling		1070' (470') (145)	1100' (500') (155)	1250' (650') (200)	1360' (760') (235)					
GROUND SPEED	km/h	150	180	210	240	270	300	330	360	390
	kt	81	97	113	130	146	162	178	194	211
RATE OF DESCENT	m/s	1.9	2.3	2.7	3.1	3.5	3.9	4.3	4.7	5.0
	ft/min	374	453	532	610	689	768	847	925	984

CHANGE: New chart