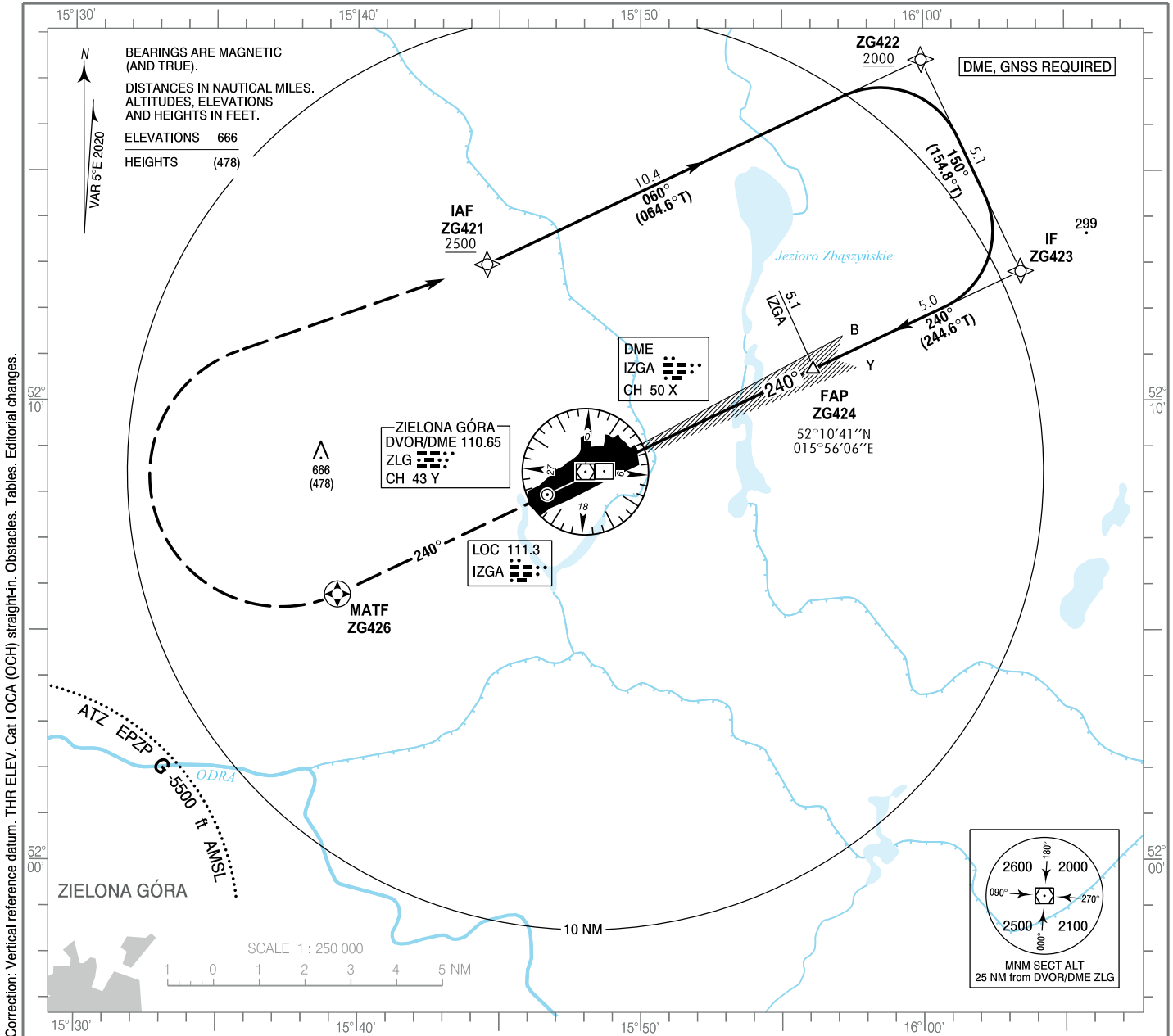


**INSTRUMENT
APPROACH
CHART - ICAO**

AERODROME ELEV 194 ft
THR RWY 24 ELEV 188 ft
HEIGHTS RELATED TO THR RWY 24

Poznań APPROACH 128.925
Zielona Góra TOWER 118.755
FIS Poznań 126.300

**Zielona Góra - Babimost
ILS z
RWY 24 (CAT A/B/C/D)**

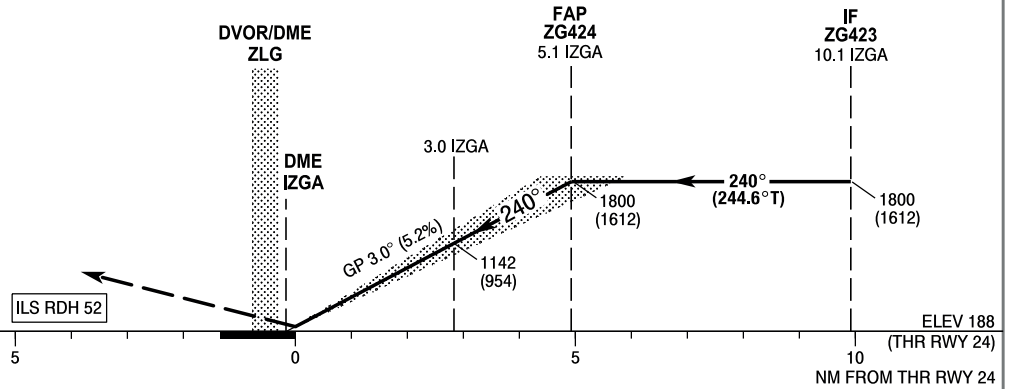


Correction: Vertical reference datum. THR ELEV. Cat I OCA (OCH) straight-in. Obstacles. Tables. Editorial changes.

MISSED APPROACH

Climb on course 240° to ZG426 then turn right to ZG421 climbing to 2500 (2312). Further instructions from ATC. Turn limited to 220 kt IAS max.

TRANSITION ALTITUDE 6500



OCA (OCH)					Distance FAP - RW24 4.9 NM								
Cat. of ACFT	Cat. I	A	B	C	D	Speed	kt	80	100	120	140	160	180
				387 (199)	399 (211)	407 (219)	418 (230)	Time	min : s	3 : 41	2 : 56	2 : 27	2 : 06
Straight - in						Rate of descent	ft / min	420	530	640	740	850	960
						Final approach distance / altitude (height)							
Circling (OCH AAL)		680 (486)	750 (556)	960 (766)	1060 (866)	Distance		5	4	3	2		
						Altitude (height)		1780 (1592)	1460 (1272)	1150 (962)	830 (642)		

**ZIELONA GÓRA/Babimost
 ILS z RWY 24 (CAT A/B/C/D)**

EPZG RNAV (GNSS) RWY 24 INITIAL transition from ZG421

SEQUENCE NUMBER	PATH TERMINATOR	WAYPOINT IDENTIFIER	FLY - OVER	COURSE/TRACK °M (°T)	DISTANCE (NM)	TURN DIRECTION	ALTITUDE	SPEED (kt)	VPA/TCH	NAV SPEC
001	IF	ZG421	-	-	-	-	+2500 ft	-230	-	RNP 1
002	TF	ZG422	-	060 (064.61)	10.45	R	+2000 ft	-	-	RNP 1
003	TF	ZG423	-	150 (154.81)	5.10	R	+1800 ft	-	-	RNP 1

EPZG RNAV (GNSS) RWY 24 MISSED APPROACH transition

SEQUENCE NUMBER	PATH TERMINATOR	WAYPOINT IDENTIFIER	FLY - OVER	COURSE/TRACK °M (°T)	DISTANCE (NM)	TURN DIRECTION	ALTITUDE	SPEED (kt)	VPA/TCH	NAV SPEC
005	-	RW24	-	-	-	-	-	-	-	RNP 1
006	CF	ZG426	Y	240 (244.68)	6.57	-	-	-	-	RNP 1
007	DF	ZG421	-	-	15.09	R	+2500 ft	-220	-	RNP 1

WAYPOINT IDENTIFIER	COORDINATES		FIX FORMATION	
ZG421 (IAF)	52 12 58.2 N	015 44 33.6 E	-	-
ZG422	52 17 25.6 N	015 59 55.8 E	-	-
ZG423 (IF)	52 12 49.0 N	016 03 27.5 E	244.64°GEO (240°MAG) LOC IZGA	10.07 NM DME IZGA
ZG424 (FAP)	52 10 41.4 N	015 56 05.9 E	244.65°GEO (240°MAG) LOC IZGA	5.07 NM DME IZGA
RW24	52 08 36.0 N	015 48 54.2 E	-	-
ZG426 (MATF)	52 05 47.2 N	015 39 16.7 E	-	-