

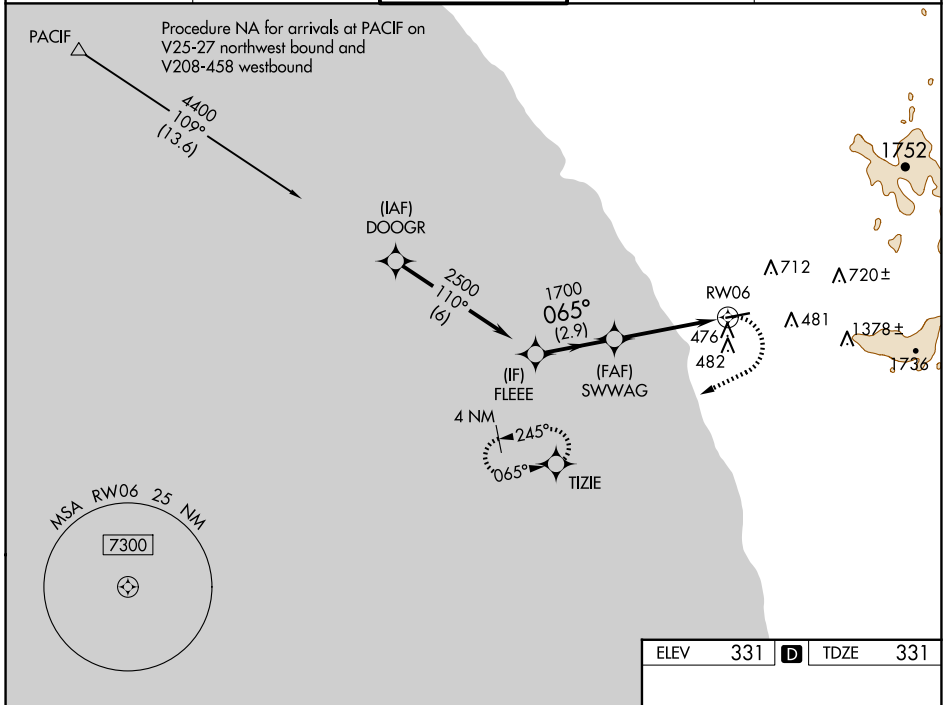
WAAS CH 40239 W06A	APP CRS 065°	Rwy Idg TDZE Apt Elev	4600 331 331
--	------------------------	-----------------------------	---

RNAV (GPS) Y RWY 6

MC CLELLAN-PALOMAR (CRQ)

RNP APCH-GPS.	MISSED APPROACH: Climbing right turn to 3000 direct TIZIE and hold, continue climb-in-hold to 3000.
<p>▼ For uncompensated Baro-VNAV systems, LNAV/VNAV NA below 4°C or above 54°C. When Carlsbad altimeter setting not received, procedure NA.</p>	

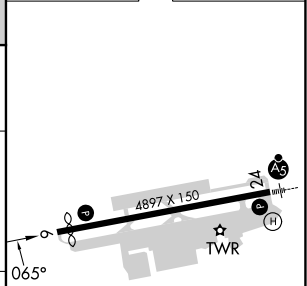
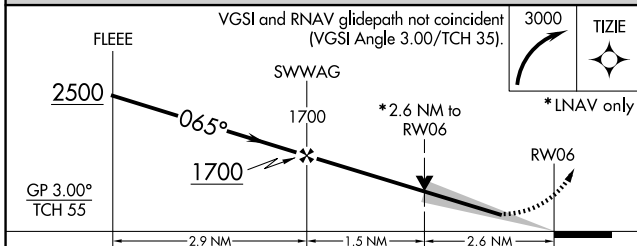
ATIS 120.15	SOCAL APP CON 127.3 323.0	PALOMAR TOWER * 118.6 (CTAF) 0 276.4	GND CON 121.8	CLNC DEL 134.85
-----------------------	-------------------------------------	---	-------------------------	---------------------------



SW-3, 20 MAR 2025 to 17 APR 2025

SW-3, 20 MAR 2025 to 17 APR 2025

ELEV	331	D	TDZE	331
------	-----	----------	------	-----



CATEGORY	A	B	C	D
LPV DA		796-1½	465 (500-1½)	
LNAV/VNAV DA		837-1¾	506 (600-1¾)	
LNAV MDA	1200-1 869 (900-1)	1200-1¼ 869 (900-1¼)	1200-2½	869 (900-2½)
C CIRCLING	1200-1¼	869 (900-1¼)	1260-2¾ 929 (1000-2¾)	NA

HIRL Rwy 6-24	0
---------------	----------