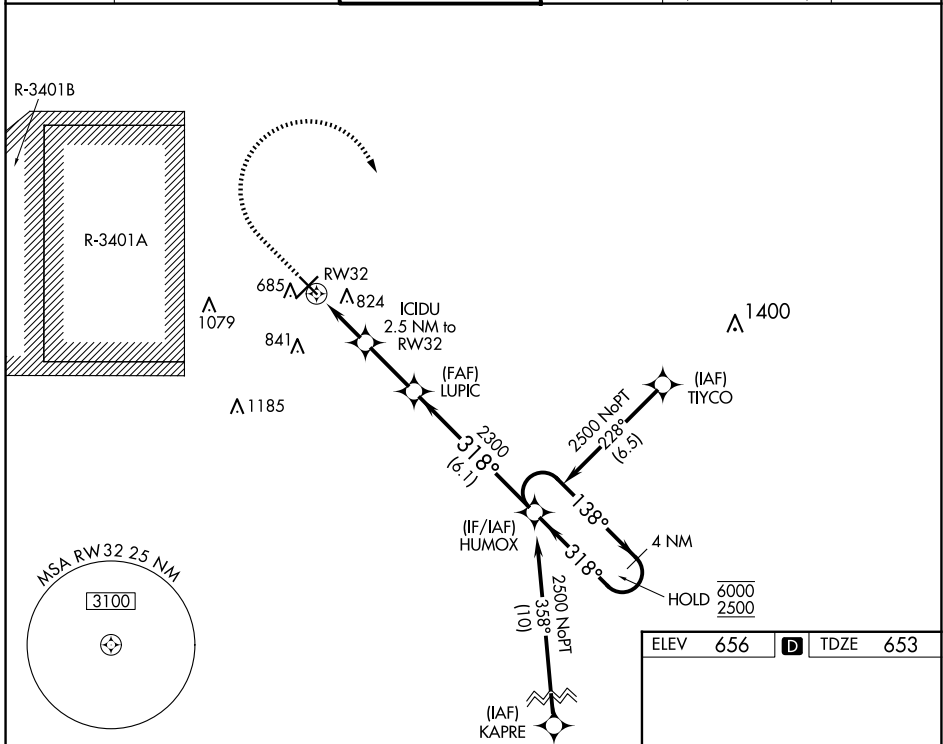


WAAS CH <b>50399</b> <b>W32A</b>	APP CRS <b>318°</b>	Rwy Idg TDZE <b>653</b> Apt Elev <b>656</b>	<b>5000</b>
--	------------------------	---	-------------

# RNAV (GPS) RWY 32

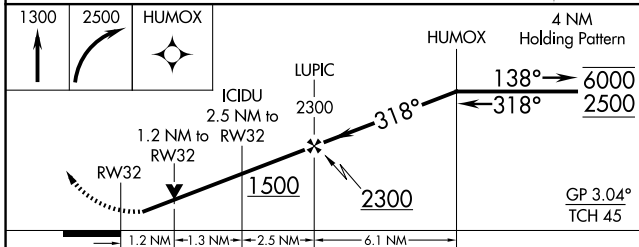
COLUMBUS MUNI (BAK)

RNP APCH - GPS.		MISSED APPROACH: Climb to 1300, then climbing right turn to 2500 direct HUMOX and hold.	
<p><b>▼</b> Rwy 32 helicopter visibility reduction below 3/4 SM NA. For uncompensated Baro-VNAV systems, LNAV/VNAV NA below -16°C or above 54°C.</p>			
AWOS-3 <b>119.75</b>	INDIANAPOLIS APP CON <b>134.85 317.8</b>	COLUMBUS TOWER ★ <b>118.6</b> (CTAF) <b>0</b>	GND CON <b>121.6</b>
		CLNC DEL <b>134.85</b> (When twr closed)	UNICOM <b>122.95</b>

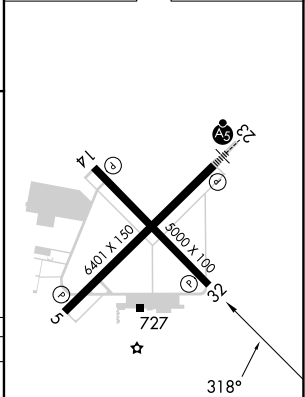


EC-2, 20 MAR 2025 to 17 APR 2025

EC-2, 20 MAR 2025 to 17 APR 2025



ELEV	656	TDZE	653
------	-----	------	-----



CATEGORY	A	B	C	D
LPV DA		903-1	250 (300-1)	
LNAV/VNAV DA		1056-1 1/8	403 (400-1 1/8)	
LNAV MDA	1080-1	427 (500-1)	1080-1 1/4	427 (500-1 1/4)

MIRL Rwy 14-32 **1**  
 HIRL Rwy 5-23 **1**  
 REIL Rws 5, 14, and 32 **1**