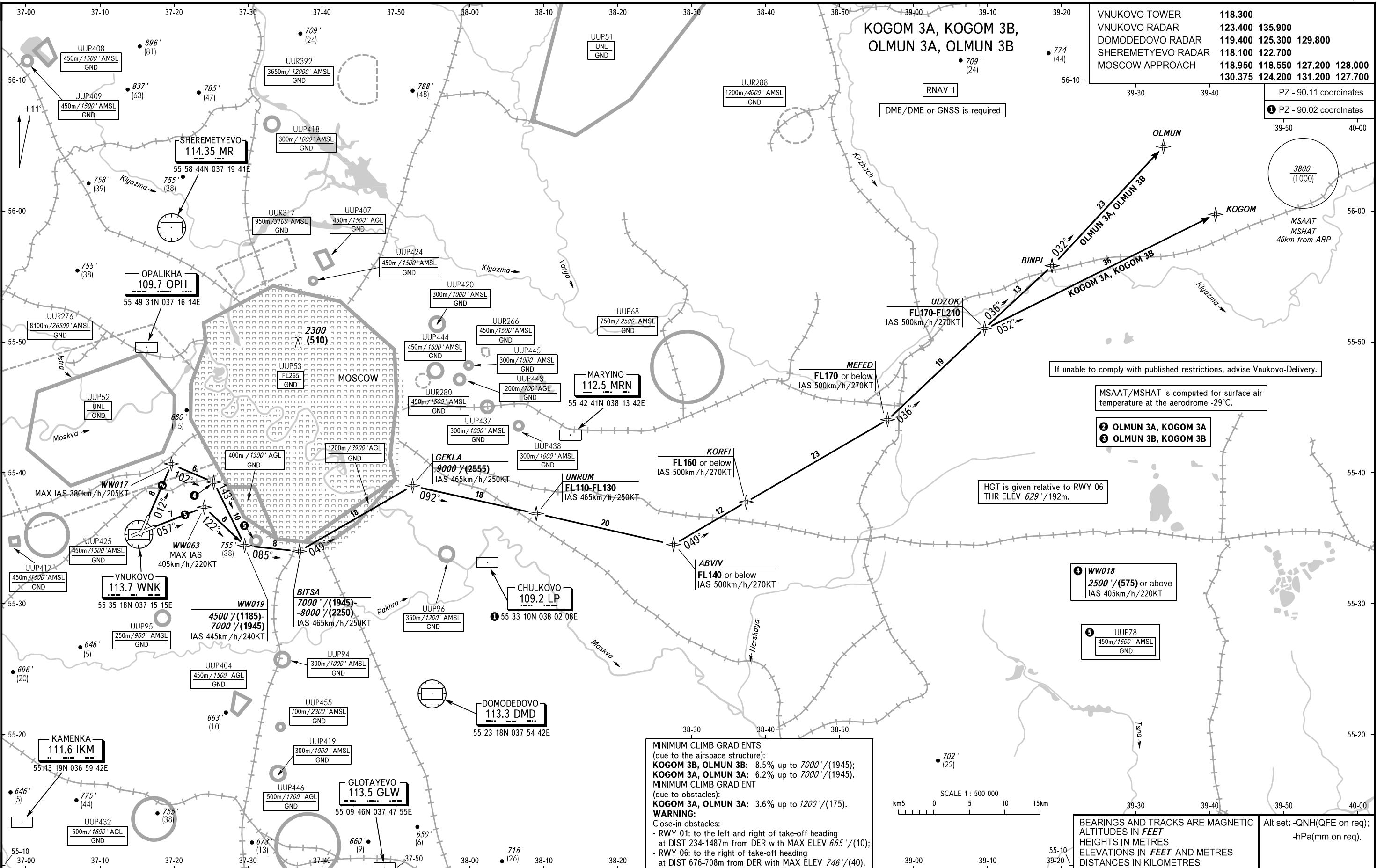


STANDARD DEPARTURE CHART
INSTRUMENT (SID) - ICAO

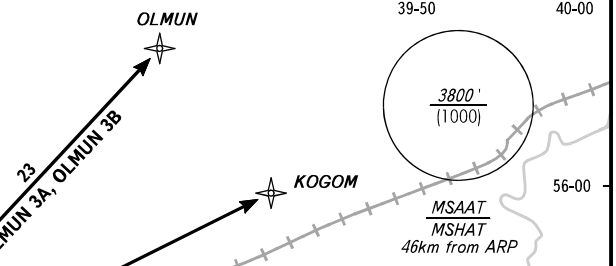
TRANSITION ALT: **10000'**
TRANSITION HGT: **(2900)**

MOSCOW, RUSSIA
VNUKOVO
RNAV RWY 01, 06

VNUKOVO TOWER	118.300
VNUKOVO RADAR	123.400 135.900
DOMODEDOVO RADAR	119.400 125.300 129.800
SHEREMETYEVO RADAR	118.100 122.700
MOSCOW APPROACH	118.950 118.550 127.200 128.000
	130.375 124.200 131.200 127.700



PZ - 90.11 coordinates
 ① PZ - 90.02 coordinates



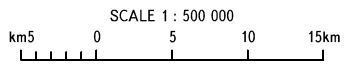
If unable to comply with published restrictions, advise Vnukovo-Delivery.
 MSAAT/MSHAT is computed for surface air temperature at the aerodrome -29°C.

- ② OLMUN 3A, KOGOM 3A
- ③ OLMUN 3B, KOGOM 3B

HGT is given relative to RWY 06
 THR ELEV 629' / 192m.

- ④ WW018
2500' / (575) or above
IAS 405km/h / 220KT
- ⑤ UUP78
450m / 1500' AMSL
GND

MINIMUM CLIMB GRADIENTS
 (due to the airspace structure):
KOGOM 3B, OLMUN 3B: 8.5% up to 7000' / (1945);
KOGOM 3A, OLMUN 3A: 6.2% up to 7000' / (1945).
 MINIMUM CLIMB GRADIENT
 (due to obstacles):
KOGOM 3A, OLMUN 3A: 3.6% up to 1200' / (175).
WARNING:
 Close-in obstacles:
 - RWY 01: to the left and right of take-off heading
 at DIST 234-1487m from DER with MAX ELEV 665' / (10);
 - RWY 06: to the right of take-off heading
 at DIST 676-708m from DER with MAX ELEV 746' / (40).



BEARINGS AND TRACKS ARE MAGNETIC
 ALTITUDES IN FEET
 HEIGHTS IN METRES
 ELEVATIONS IN FEET AND METRES
 DISTANCES IN KILOMETRES

Alt set: -QN(H/QFE on req);
 -hPa(mm on req).