

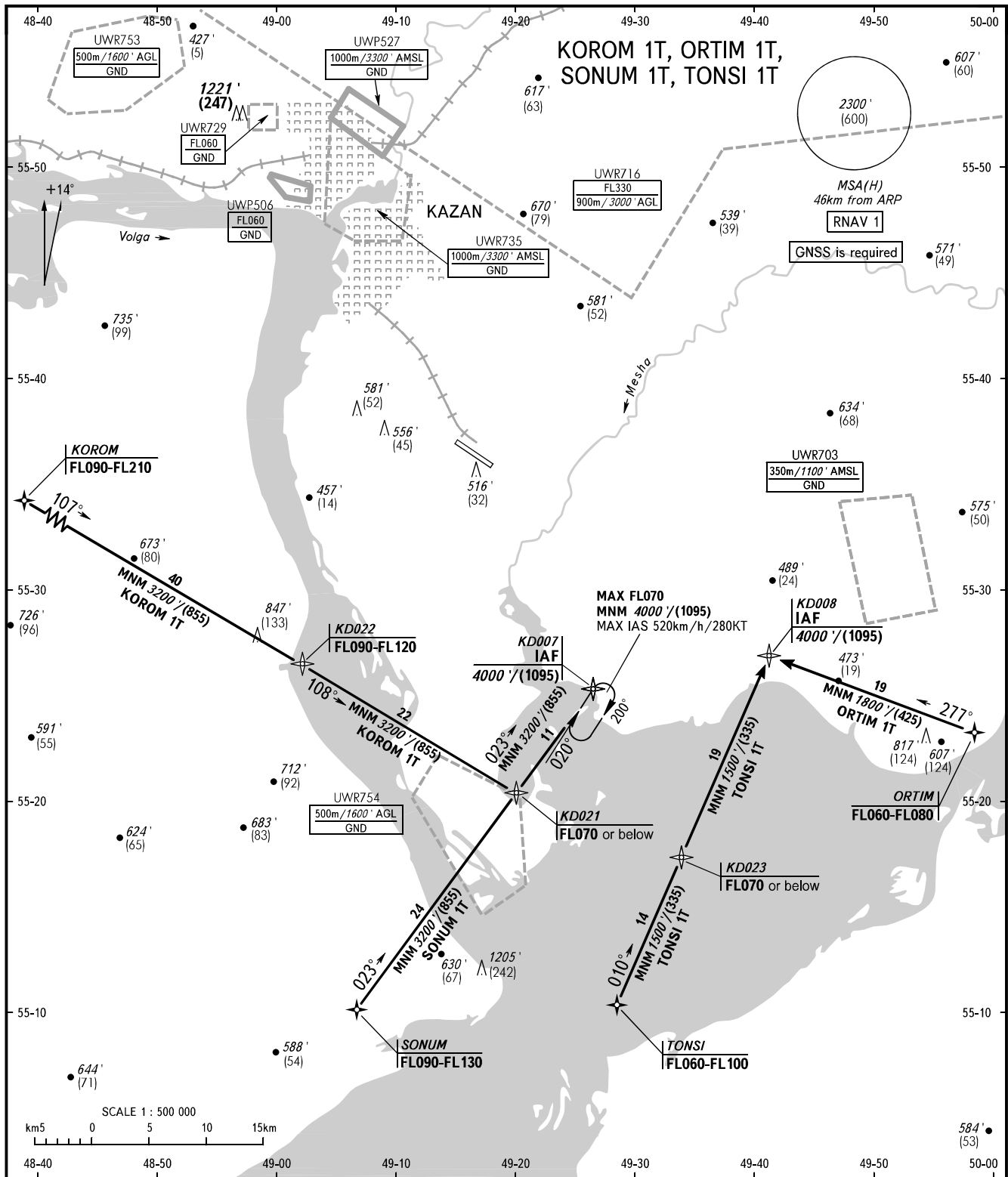
STANDARD ARRIVAL CHART
INSTRUMENT (STAR) - ICAO

KAZAN, RUSSIA

KAZAN

RNAV RWY 29

TRANSITION
LEVEL: **1**



APPROACH Sector WEST	135.225
Sector EAST	128.625
RADAR START	119.400
START	120.300

- 1** TRANSITION LEVEL:
- FL050 when QNH is 1013 hPa (760mm mercury column) or above;
 - FL060 when QNH is 977 hPa (733mm mercury column) or above, but less than 1013 hPa (760mm mercury column);
 - FL070 when QNH is less than 977 hPa (733mm mercury column).

BEARINGS AND TRACKS ARE MAGNETIC
ALTITUDES IN **FEET**
HEIGHTS IN METRES
ELEVATIONS IN **FEET** AND METRES
DISTANCES IN KILOMETRES

Alt set: -QNH(QFE on req);
 -hPa(mm on req).