

CHANGE: TMA Zagreb classification vertical limits; Parachuting zones added; Editorial.

© Hrvatska kontrola zračne plovidbe d.o.o.
Croatia Control Ltd.

AIP HRVATSKA
AIP CROATIA

STANDARD DEPARTURE CHART
INSTRUMENT (SID) - ICAO

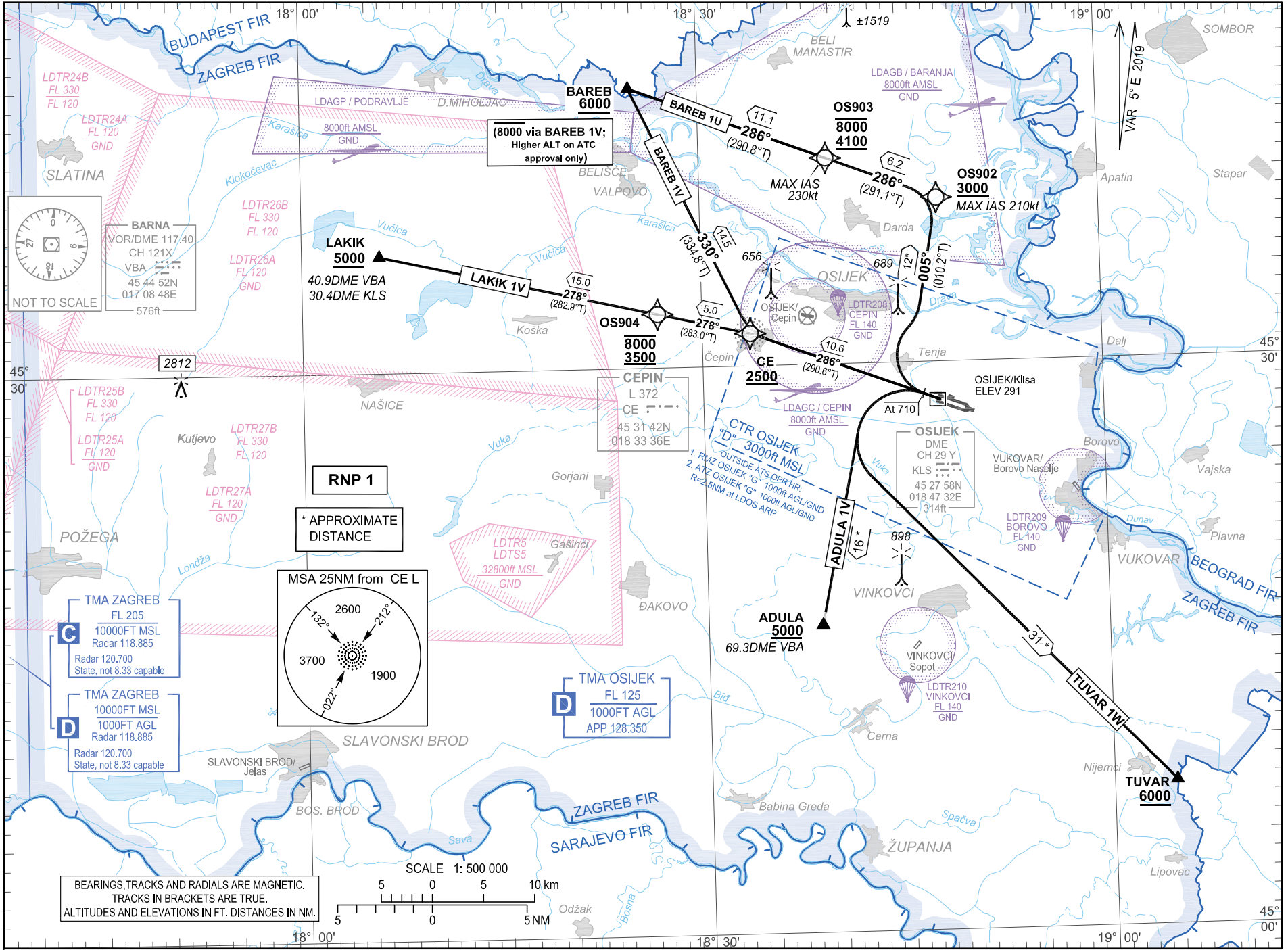
TRANSITION ALTITUDE
10 000

OSIJEK TOWER
OSIJEK APPROACH
OSIJEK APPROACH ALTN 125 850

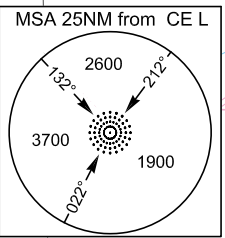
BAREB 1U BAREB 1V
LAKIK 1V ADULA 1V

OSIJEK / Kliša (LDOS)
RNP RWY 29

LDOS AD 2.24.8 SID RNP RWY 29 -1
15 MAY 2025



BEARINGS, TRACKS AND RADIALS ARE MAGNETIC.
TRACKS IN BRACKETS ARE TRUE.
ALTITUDES AND ELEVATIONS IN FT. DISTANCES IN NM.

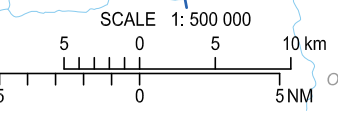


RNP 1
* APPROXIMATE DISTANCE

C TMA ZAGREB
FL 205
10000FT MSL
Radar 118.885
Radar 120.700
State, not 8.33 capable

D TMA ZAGREB
10000FT MSL
1000FT AGL
Radar 118.885
Radar 120.700
State, not 8.33 capable

D TMA OSIJEK
FL 125
1000FT AGL
APP 128.350



NOT TO SCALE

AIRAC AIP AMDT 004/2025

OSIJEK / Klisa (LDOS)

RNP RWY 29

BAREB 1U BAREB 1V
LAKIK 1V ADULA 1V TUVAR 1W

Calculation of the SIDs is based on an all-engines operative minimum net climb gradient of 3.3 per cent (201 ft/NM). Where a greater climb gradient for a specific SID (or part of SID) is necessary this is indicated in the tabular description of the route.

LDOS RNP STANDARD INSTRUMENT DEPARTURE RWY 29

Proposed tabular description for navigation database coding

Serial number	Route	Path descriptor	Waypoint name	Flyover	Course °M (°T)	Magnetic variation	Distance (NM)	Turn direction	Altitude (ft)	Speed (kt)	Remarks	NAV SPEC
010	BAREB 1U	CA	-	-	286° (290.6°T)	5°E	-	-	@710	-	MNM PDG 3.5% to 1800 ft AMSL	RNP 1
020		CF	OS902	-	005° (010.2°T)	5°E	-	-	+3000	-210		
030		TF	OS903	-	286° (291.1°T)	5°E	6.2	-	-8000 +4100	-230		
040		TF	BAREB	-	286° (290.8°T)	5°E	11.1	-	+6000	-		
010	BAREB 1V	CF	CE	-	286° (290.6°T)	5°E	10.6	-	+2500	-	⁽¹⁾ Higher ALT on ATC approval only	RNP 1
020		TF	BAREB	-	330° (334.8°T)	5°E	14.5	-	-8000 ⁽¹⁾ +6000	-		
010	LAKIK 1V	CF	CE	-	286° (290.6°T)	5°E	10.6	-	+2500	-	-	RNP 1
020		TF	OS904	-	278° (283.0°T)	5°E	5.0	-	-8000 +3500	-		
030		TF	LAKIK	-	278° (282.9°T)	5°E	15.0	-	+5000	-		
010	ADULA 1V	CA	-	-	286° (290.6°T)	5°E	-	-	@710	-	-	RNP 1
020		DF	ADULA	-	-	5°E	-	L	+5000	-		
010	TUVAR 1W	CA	-	-	286° (290.6°T)	5°E	-	-	@710	-	-	RNP 1
020		DF	TUVAR	-	-	5°E	-	L	+6000	-		

Waypoint coordinates

Waypoint name	WGS-84 latitude	WGS-84 longitude
ADULA	451614N	0183831E
BAREB	454446N	0182448E
LAKIK	453608N	0180551E
TUVAR	450736N	0190439E
CE	453142.33N	0183336.18E
OS902	453838.8N	0184749.3E
OS903	454052.2N	0183933.6E
OS904	453249.5N	0182640.2E

CHANGE: TMA Zagreb classification vertical limits; Parachuting zones added; Editorial.