

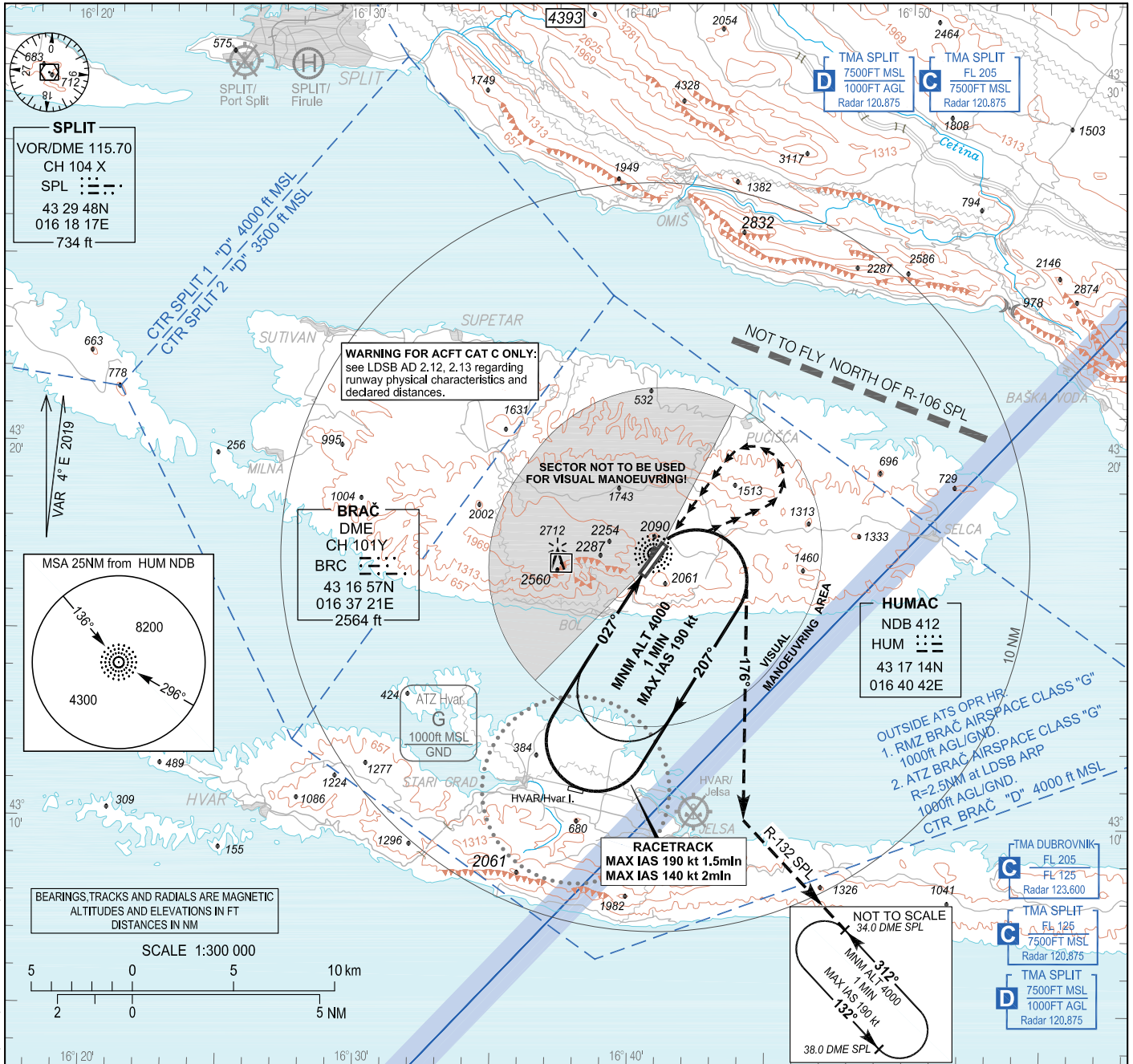
INSTRUMENT APPROACH
CHART-ICAO

AD ELEV 1781
HEIGHTS RELATED
TO AD ELEV 1781

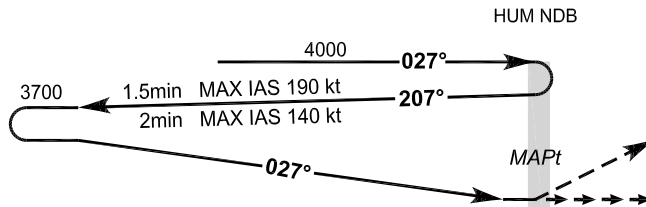
SPLIT RADAR 120.875
BRAČ TOWER 118.025

BRAČ / Brač I. (LDSB)

NDB - a RWY 21



TRANSITION ALT 10 000



MISSED APPROACH:
At HUM NDB turn
RIGHT on track 176°,
intercept R-132 SPL
climbing to 34.0 DME SPL
at 4000 and hold.

AD ELEV 1781

NM to/from THR 21

OCA(H)	A	B	C
CIRCLING	2650 (870)		

Circling NW of aerodrome not allowed.

MAPt at HUM NDB.

WARNING FOR ACFT CAT C ONLY:

see LDSB AD 2.12, 2.13 regarding runway physical characteristics and declared distances.

CHANGE: RMZ Brač added; ATZ Brač added; Obstacles updated; Heliport Split/Firule added; Split/Resnik Water aerodrome removed; Editorial.

OVA STRANICA JE NAMJERNO OSTAVLJENA PRAZNA
THIS PAGE INTENTIONALLY LEFT BLANK