

WAAS CH <b>99427</b> <b>W32A</b>	APP CRS <b>325°</b>	Rwy Idg TDZE Apt Elev	<b>5002</b> <b>68</b> <b>79</b>
--	------------------------	-----------------------------	---------------------------------------

# RNAV (GPS) RWY 32

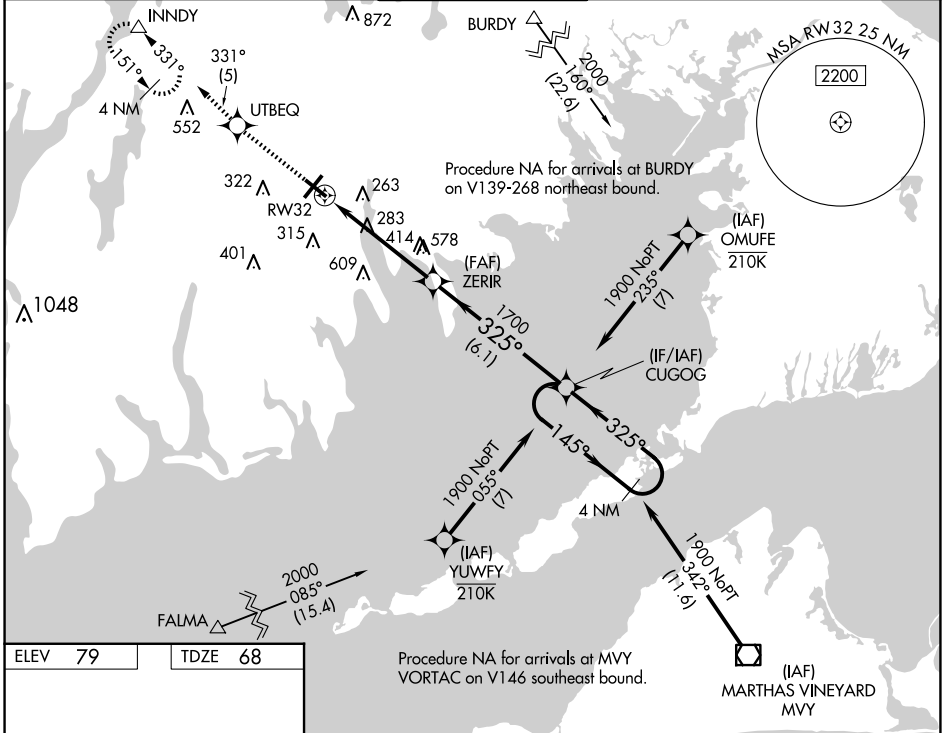
NEW BEDFORD RGNL (EWB)

RNP APCH - GPS.

▼ Rwy 32 helicopter visibility reduction below 3/4 SM NA. When local altimeter setting not received, use Taunton altimeter setting and increase all MDA 40 feet, and all visibilities 1/4 mile. \*VDP NA when using Taunton altimeter setting.

MISSED APPROACH: Climb to 2000 direct UTBEQ and on track 331° to INNDY and hold.

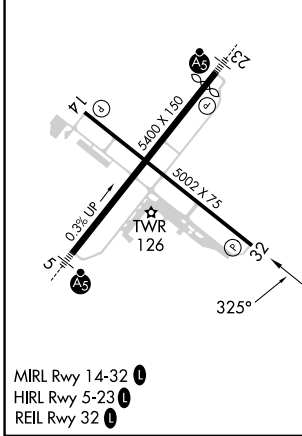
ATIS <b>126.85</b>	PROVIDENCE APP CON * <b>128.7 269.525</b>	NEW BEDFORD TOWER * <b>118.1 (CTAF) 239.0</b>	GND CON <b>121.9</b>	UNICOM <b>122.95</b>
-----------------------	--	--	-------------------------	-------------------------



NE-1, 20 MAR 2025 to 17 APR 2025

NE-1, 20 MAR 2025 to 17 APR 2025

ELEV 79	TDZE 68
---------	---------



- MIRL Rwy 14-32
- HIRL Rwy 5-23
- REIL Rwy 32

2000	UTBEQ	tr	INNDY	Visual Segment - Obstacles.	4 NM Holding Pattern
↑	✧	331°	△		
CATEGORY	A	B	C	D	
LP MDA	720-1	652 (700-1)	720-1 7/8	652 (700-1 7/8)	
LNVA MDA	880-1 812 (900-1)	880-1 1/4 812 (900-1 1/4)	880-2 1/2	812 (900-2 1/2)	
<b>C</b> CIRCLING	880-1 801 (900-1)	880-1 1/4 801 (900-1 1/4)	880-2 1/2 801 (900-2 1/2)	960-3 881 (900-3)	