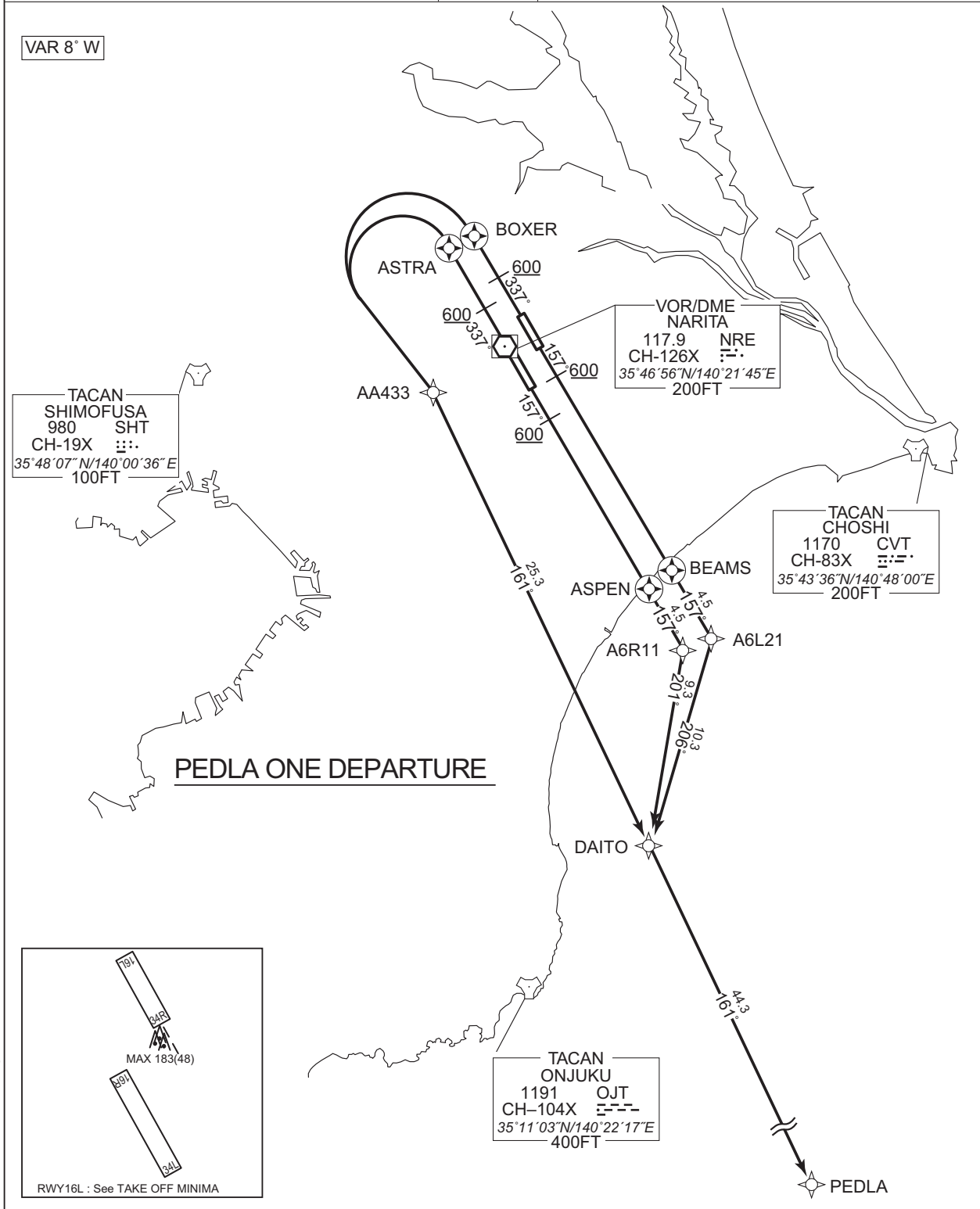


STANDARD DEPARTURE CHART -INSTRUMENT

RJAA / NARITA INTL

RNAV SID

PEDLA ONE DEPARTURE		RNAV1
Note 1) DME/DME/IRU or GNSS required. ※The aircraft equipped with only DME/DME/IRU must be able to update its position without delay at the starting point of take-off rolling. 2) RADAR service required.	Critical DME	RWY16R:TLD DER – 1.3NM FM DER RWY16L:TLD DER – 3.4NM FM DER
	DME GAP	RWY34L :DER – 1.3NM FM DER
	Inappropriate Navaids	See AD1.1.6.10.3.Inappropriate NAVAIDs for RNAV1



CHANGE : Description of VAR.

STANDARD DEPARTURE CHART -INSTRUMENT

RJAA / NARITA INTL

RNAV SID

PEDLA ONE DEPARTURE

RWY16R : Climb on HDG 157° at or above 600FT, direct to ASPEN, to A6R11, to DAITO, to PEDLA.

RWY16L : Climb on HDG 157° at or above 600FT, direct to BEAMS, to A6L21, to DAITO, to PEDLA.

RWY34L : Climb on HDG 337° at or above 600FT, direct to ASTRA, turn left direct to AA433, to DAITO, to PEDLA.

RWY34R : Climb on HDG 337° at or above 600FT, direct to BOXER, turn left direct to AA433, to DAITO, to PEDLA.

RWY16R

Serial Number	Path Descriptor	Waypoint Identifier	Fly Over	Course °M(°T)	Magnetic Variation	Distance (NM)	Turn Direction	Altitude (FT)	Speed (KIAS)	Vertical Angle	Navigation Specification
001	VA	-	-	157 (149.6)	-7.5	-	-	+600	-	-	RNAV1
002	DF	ASPEN	Y	-	-7.5	-	-	-	-	-	RNAV1
003	TF	A6R11	-	157 (149.7)	-7.5	4.5	-	-	-	-	RNAV1
004	TF	DAITO	-	201 (193.3)	-7.5	9.3	-	-	-	-	RNAV1
005	TF	PEDLA	-	161 (153.9)	-7.5	44.3	-	-	-	-	RNAV1

RWY16L

Serial Number	Path Descriptor	Waypoint Identifier	Fly Over	Course °M(°T)	Magnetic Variation	Distance (NM)	Turn Direction	Altitude (FT)	Speed (KIAS)	Vertical Angle	Navigation Specification
001	VA	-	-	157 (149.6)	-7.5	-	-	+600	-	-	RNAV1
002	DF	BEAMS	Y	-	-7.5	-	-	-	-	-	RNAV1
003	TF	A6L21	-	157 (149.7)	-7.5	4.5	-	-	-	-	RNAV1
004	TF	DAITO	-	206 (198.7)	-7.5	10.3	-	-	-	-	RNAV1
005	TF	PEDLA	-	161 (153.9)	-7.5	44.3	-	-	-	-	RNAV1

CHANGE : New PROC

STANDARD DEPARTURE CHART -INSTRUMENT

RJAA / NARITA INTL

RNAV SID

RWY34L

Serial Number	Path Descriptor	Waypoint Identifier	Fly Over	Course °M(°T)	Magnetic Variation	Distance (NM)	Turn Direction	Altitude (FT)	Speed (KIAS)	Vertical Angle	Navigation Specification
001	VA	-	-	337 (329.6)	-7.5	-	-	+600	-	-	RNAV1
002	DF	ASTRA	Y	-	-7.5	-	-	-	-	-	RNAV1
003	DF	AA433	-	-	-7.5	-	L	-	-	-	RNAV1
004	TF	DAITO	-	161 (153.9)	-7.5	25.3	-	-	-	-	RNAV1
005	TF	PEDLA	-	161 (153.9)	-7.5	44.3	-	-	-	-	RNAV1

RWY34R

Serial Number	Path Descriptor	Waypoint Identifier	Fly Over	Course °M(°T)	Magnetic Variation	Distance (NM)	Turn Direction	Altitude (FT)	Speed (KIAS)	Vertical Angle	Navigation Specification
001	VA	-	-	337 (329.6)	-7.5	-	-	+600	-	-	RNAV1
002	DF	BOXER	Y	-	-7.5	-	-	-	-	-	RNAV1
003	DF	AA433	-	-	-7.5	-	L	-	-	-	RNAV1
004	TF	DAITO	-	161 (153.9)	-7.5	25.3	-	-	-	-	RNAV1
005	TF	PEDLA	-	161 (153.9)	-7.5	44.3	-	-	-	-	RNAV1

Waypoint Coordinates

Waypoint Identifier	Coordinates	Waypoint Identifier	Coordinates
AA433	354438.5N / 1401700.8E	BEAMS	353533.0N / 1403153.1E
A6L21	353137.9N / 1403441.9E	BOXER	355213.0N / 1401951.6E
A6R11	353056.9N / 1403316.2E	DAITO	352153.6N / 1403039.0E
ASPEN	353451.0N / 1403028.1E	PEDLA	344203.7N / 1405420.5E
ASTRA	355207.1N / 1401800.2E		

CHANGE : New PROC