

STANDARD INSTRUMENT DEPARTURE CHART - ICAO

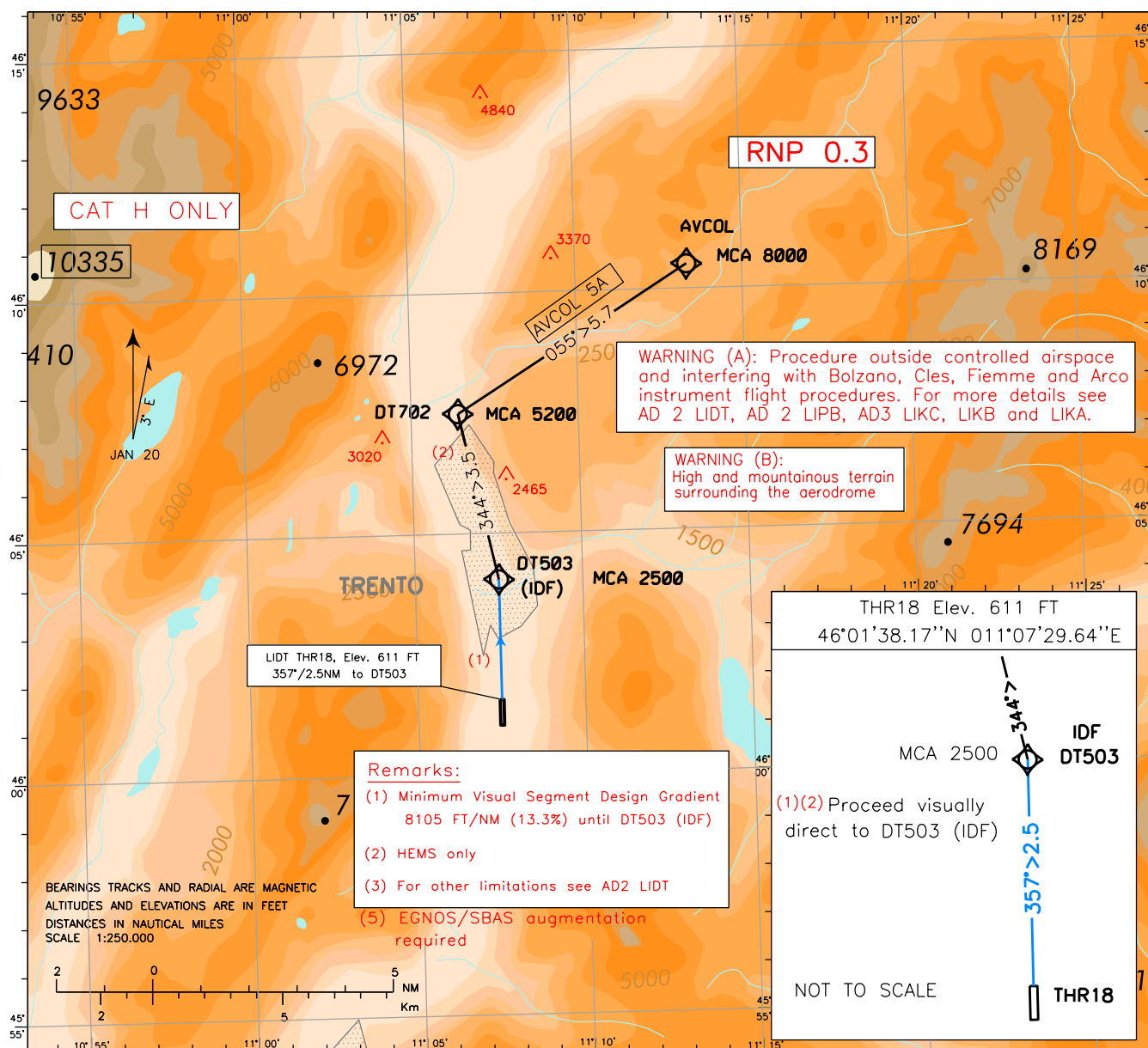
Padova ACC 120.725
 Padova FIC 124.150
 AFIS Trento Aerodrome Info 119.650
 AFIS Bolzano Aerodrome Info 120.600

AD ELEV 610

TRENTO/Mattarello LIDT
AVCOL 5A Departure

DOC 8168 ED. 7 - 2020 - AMDT 9

CHANGE: WARNING (A) UPDATED

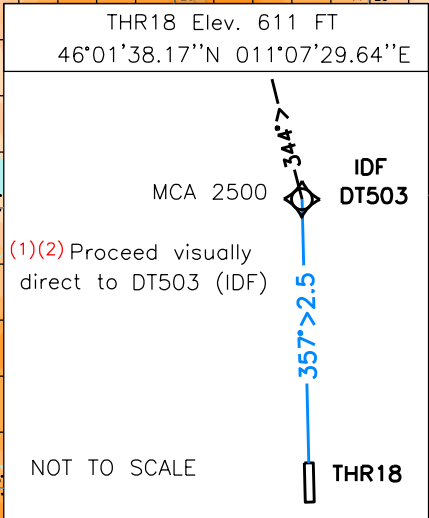


WARNING (A): Procedure outside controlled airspace and interfering with Bolzano, Cles, Fiemme and Arco instrument flight procedures. For more details see AD 2 LIDT, AD 2 LIPB, AD3 LIKC, LIKB and LIKA.

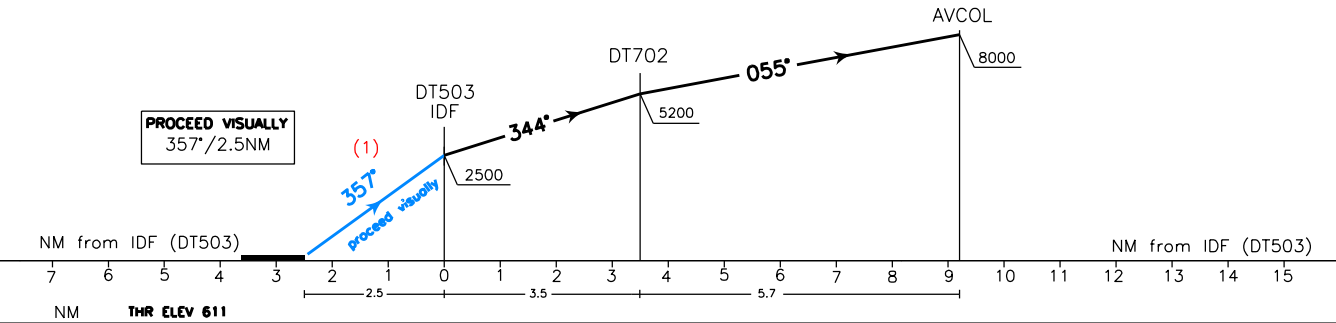
WARNING (B): High and mountainous terrain surrounding the aerodrome

LIDT THR18, Elev. 611 FT
 357°/2.5NM to DT503

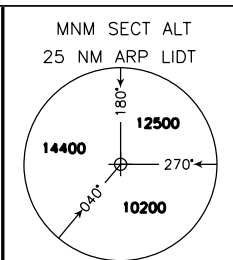
- Remarks:**
- (1) Minimum Visual Segment Design Gradient 8105 FT/NM (13.3%) until DT503 (IDF)
 - (2) HEMS only
 - (3) For other limitations see AD2 LIDT
 - (5) EGNOS/SBAS augmentation required



TRANSITION ALT 10000



	Min Climb (FT/NM)	FT/min at GS			
		60	70	80	90
Visual to DT503	810 (13.3%)	810	945	1080	1215
DT503 to DT702	770 (12.7%)	770	900	1025	1155
DT702 to AVCOL	490 (8.1%)	490	570	655	735



Produced by ENAV SpA/Roma - Data provided by Trentino Trasporti SpA