

OSVEE TWO ARRIVAL (RNAV)

AL-488 (FAA)

TRAVIS AFB (KSUU)
FAIRFIELD, CALIFORNIA

ARRIVAL ROUTE DESCRIPTION

- LIBBO TRANSITION (LIBBO.OSVEE2)
- ROVUE TRANSITION (ROVUE.OSVEE2)
- ZONSO TRANSITION (ZONSO.OSVEE2)

From MOLEN on track 057° to OCOVA.

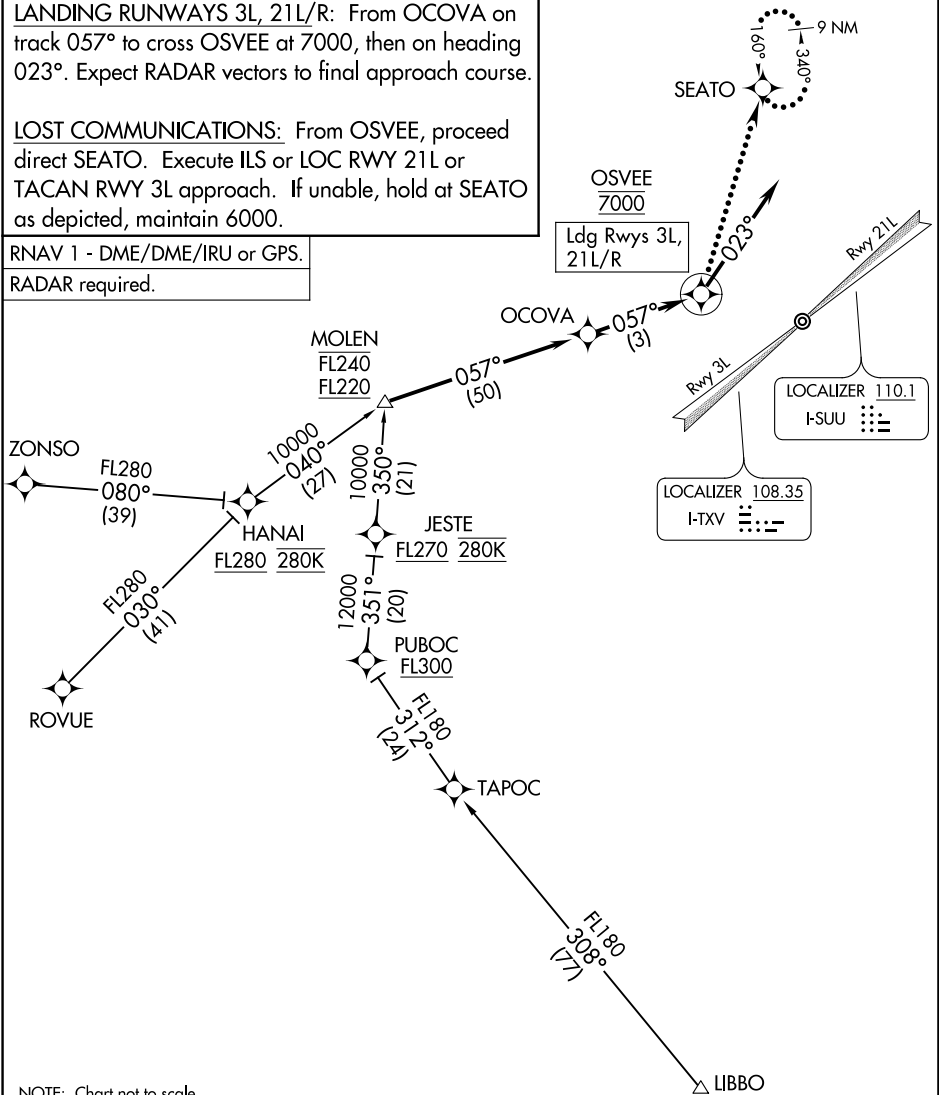
LANDING RUNWAYS 3L, 21L/R: From OCOVA on track 057° to cross OSVEE at 7000, then on heading 023°. Expect RADAR vectors to final approach course.

LOST COMMUNICATIONS: From OSVEE, proceed direct SEATO. Execute ILS or LOC RWY 21L or TACAN RWY 3L approach. If unable, hold at SEATO as depicted, maintain 6000.

RNAV 1 - DME/DME/IRU or GPS.

RADAR required.

TRAVIS APP CON
126.6 281.45 (N)
119.9 322.325 (S)
TRAVIS TOWER
120.75 254.4
GND CON
121.8 289.4
D-ATIS
135.55 292.125



SW-2, 20 MAR 2025 to 17 APR 2025

SW-2, 20 MAR 2025 to 17 APR 2025

NOTE: Chart not to scale.

OSVEE TWO ARRIVAL (RNAV)

(OSVEE.OSVEE2) 19MAY22

FAIRFIELD, CALIFORNIA
TRAVIS AFB (KSUU)