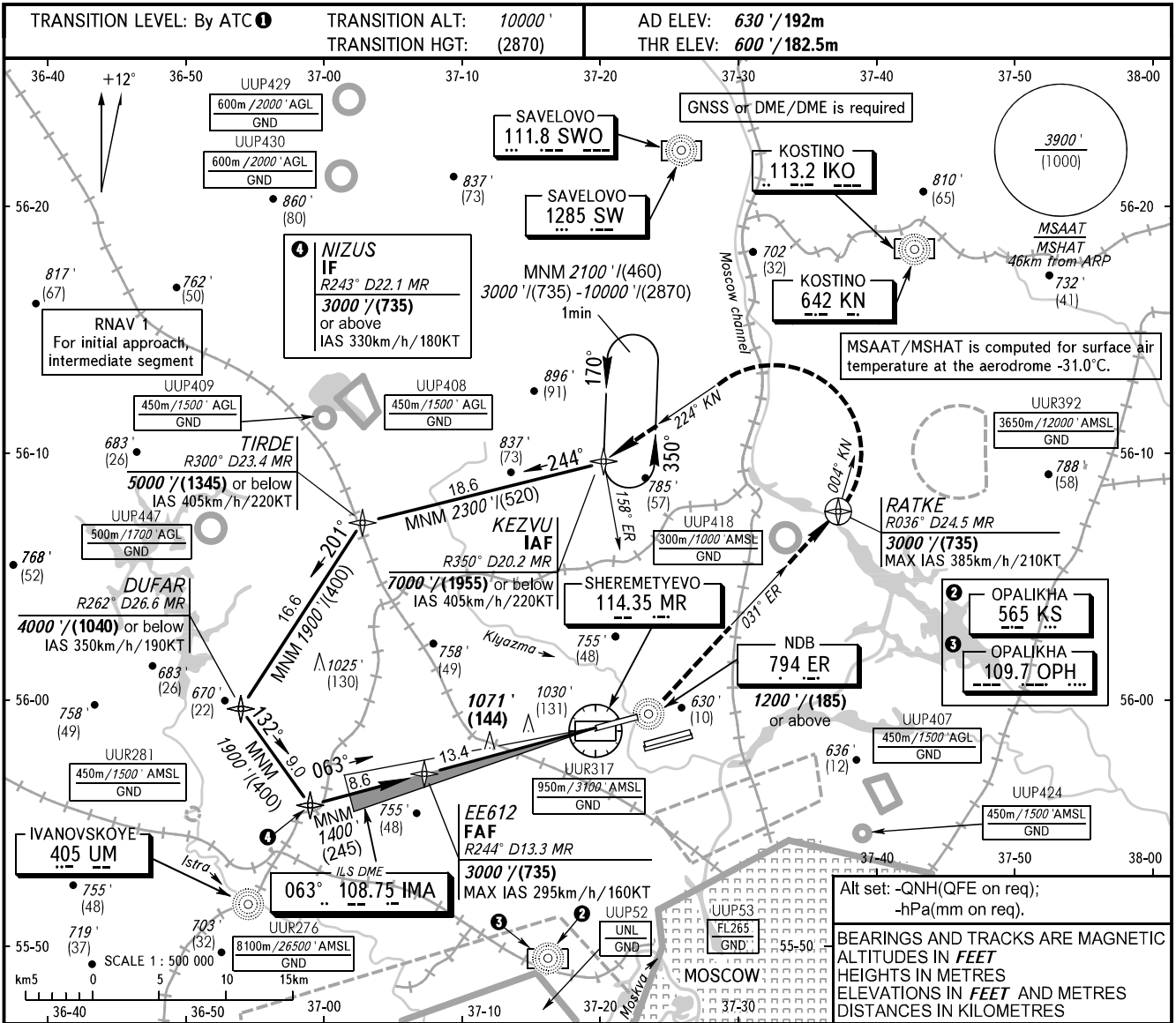


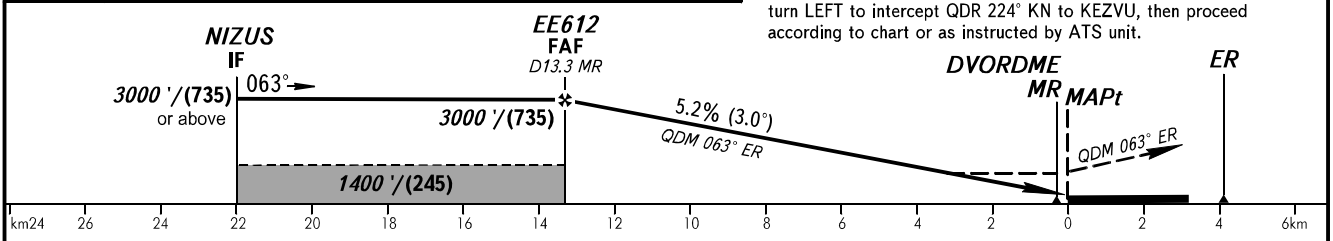
**INSTRUMENT
APPROACH
CHART - ICAO**

SHEREMETYEVO RADAR **118.100 120.675 122.700 126.600 135.175**
SHEREMETYEVO TOWER **118.700 120.700 131.500**

**MOSCOW, RUSSIA
SHEREMETYEVO
LOC RWY 06L**



MISSED APPROACH
Climb straight ahead to 1200' / (185) or above NDB ER, turn LEFT onto QDR 031° ER to RATKE climbing to 3000' / (735), on QDM 004° KN turn LEFT to intercept QDR 224° KN to KEZVU, then proceed according to chart or as instructed by ATS unit.



OCA(H)	A	B	C	D
Straight-in	1320' (720') (220)	1320' (720') (220)	1320' (720') (220)	1320' (720') (220)
Approach				

1 TRANSITION LEVEL:
- FL110 when QNH is 1013 hPa (760mm mercury column) or above;
- FL120 when QNH is 977 hPa (733mm mercury column) or above, but less than 1013 hPa (760mm mercury column);
- FL130 when QNH is less than 977 hPa (733mm mercury column).

GROUND SPEED	km/h	150	180	210	240	270	300	330	360	390	420	450
FAF-MAPt 13780m	min:sec	5:31	4:36	3:56	3:27	3:04	2:45	2:30	2:18	2:07	1:58	1:50
RATE OF DESCENT	m/s	2.2	2.6	3.0	3.5	3.9	4.3	4.8	5.2	5.6	6.1	6.5
	ft/min	427	512	597	683	768	853	939	1024	1109	1195	1280

CHANGE: UUP447