

STANDARD DEPARTURE CHART - INSTRUMENT

RJFM / MIYAZAKI

SID

SIIBA ONE DEPARTURE

RWY27 : Climb via MZE R275 to 6.0DME, turn right HDG060° to intercept and proceed via MZE R015 to SIIBA.

Cross MZE R345 at or above 6000FT.

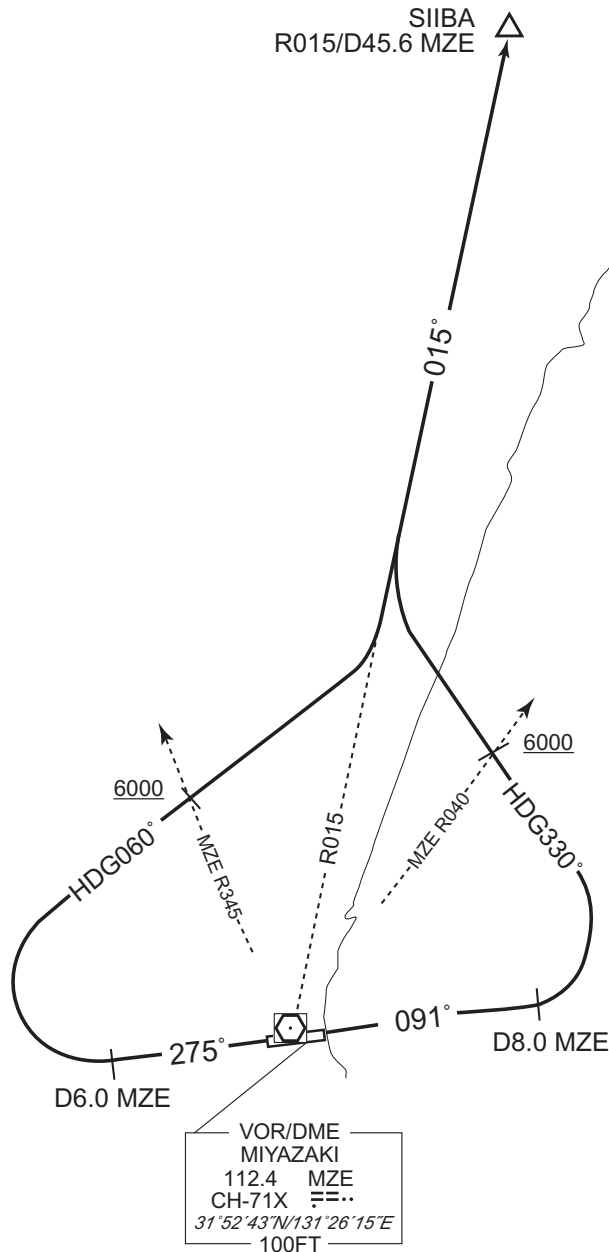
RWY09 : Climb via MZE R091 to 8.0DME, turn left HDG330° to intercept and proceed via MZE R015 to SIIBA.

Cross MZE R040 at or above 6000FT.

Note RWY27 : 5.0% climb gradient required up to 5000FT.

OBST ALT 1637FT located at 8.3NM 285° FM end of RWY27.

CHANGE : Description of PROC name.



STANDARD DEPARTURE CHART - INSTRUMENT

RJFM / MIYAZAKI

SID

LALAG ONE DEPARTURE

RWY27 : Climb via MZE R275 to 10.0DME, turn right HDG350°...

RWY09 : Climb RWY HDG to 1000FT, turn left HDG275°...

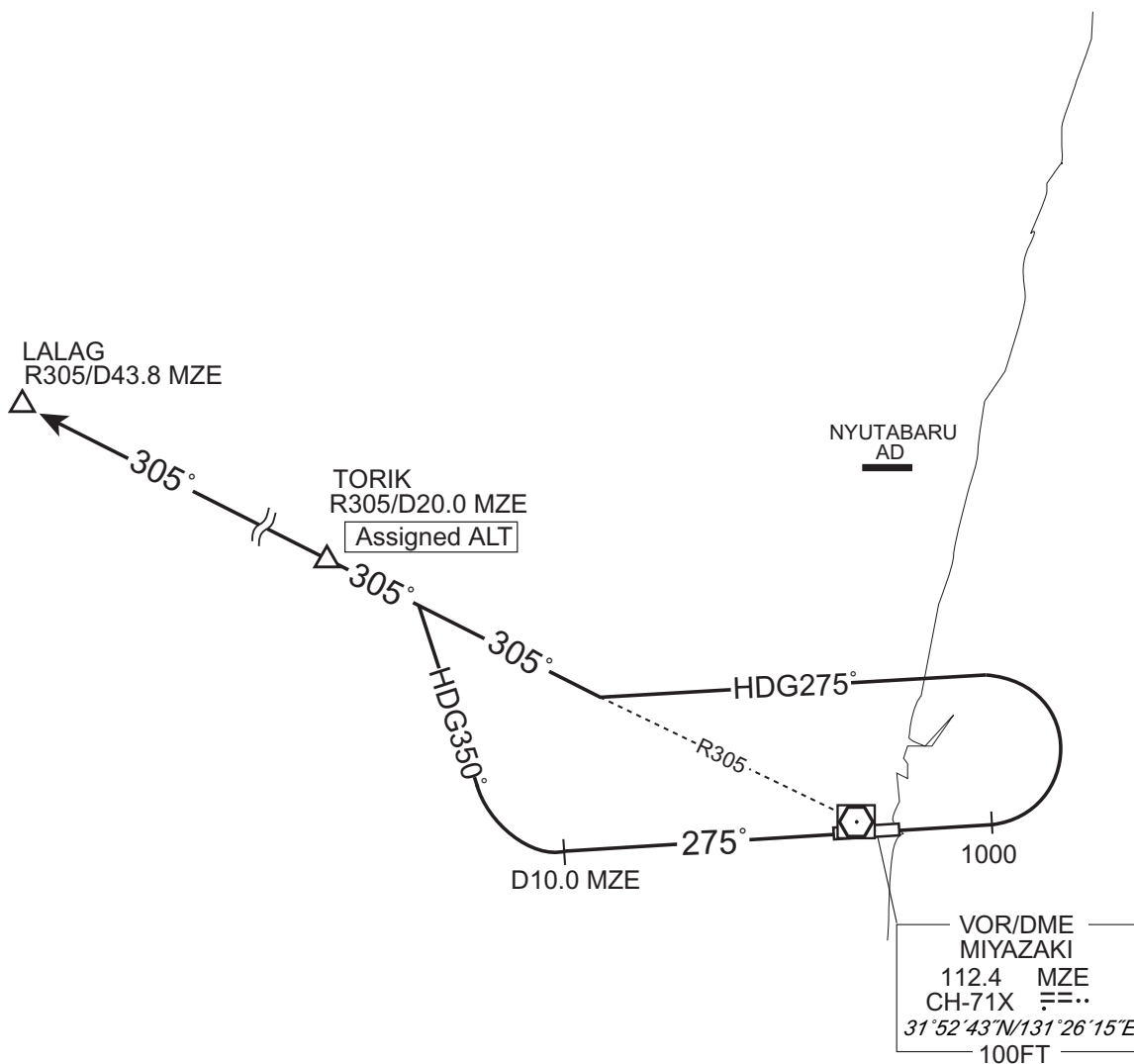
...to intercept and proceed via MZE R305 to LALAG via TORIK.

Cross TORIK at assigned altitude.

Note RWY27 : 5.0% climb gradient required up to 5000FT.

OBST ALT 152FT located at 0.7NM 276° FM end of RWY27.

RWY09 : 5.0% climb gradient required up to 1000FT.



CHANGE : New PROC.