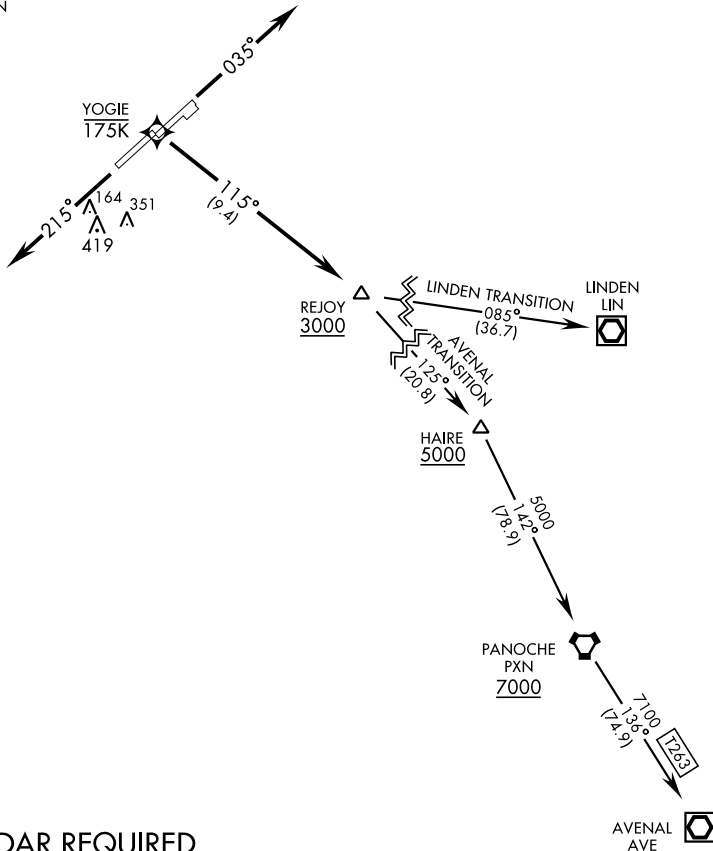


REJOY ONE DEPARTURE (RNAV) (REJOY1•REJOY)

ATIS 135.55 292.125
CLNC DEL
127.55 335.8
GND CON
121.8 289.4
TOWER
120.75 254.4
TRAVIS DEP CON
126.6 306.9

[USAF] AL-488 (CIV)



SW-2, 20 MAR 2025 to 17 APR 2025

SW-2, 20 MAR 2025 to 17 APR 2025

RNAV1 - GPS.

ATC RADAR REQUIRED

DEPARTURE ROUTE DESCRIPTION

TAKEOFF RWY 3 L/R: Climb on heading 035° to 2000, expect ATC RADAR vectors to YOGIE, then track 115° to cross REJOY at or above 3000. Thence...

TAKEOFF RWY 21L/R: Climb on heading 215° to 2000, expect ATC RADAR vectors to cross REJOY at or above 3000. Thence...

...via assigned transition. Maintain ATC assigned altitude. Expect further clearance to filed altitude within 10 minutes after departure.

AVENAL TRANSITION: (REJOY1•AVE)
LINDEN TRANSITION: (REJOY 1•LIN)

REJOY ONE DEPARTURE (RNAV) (REJOY1•REJOY)