

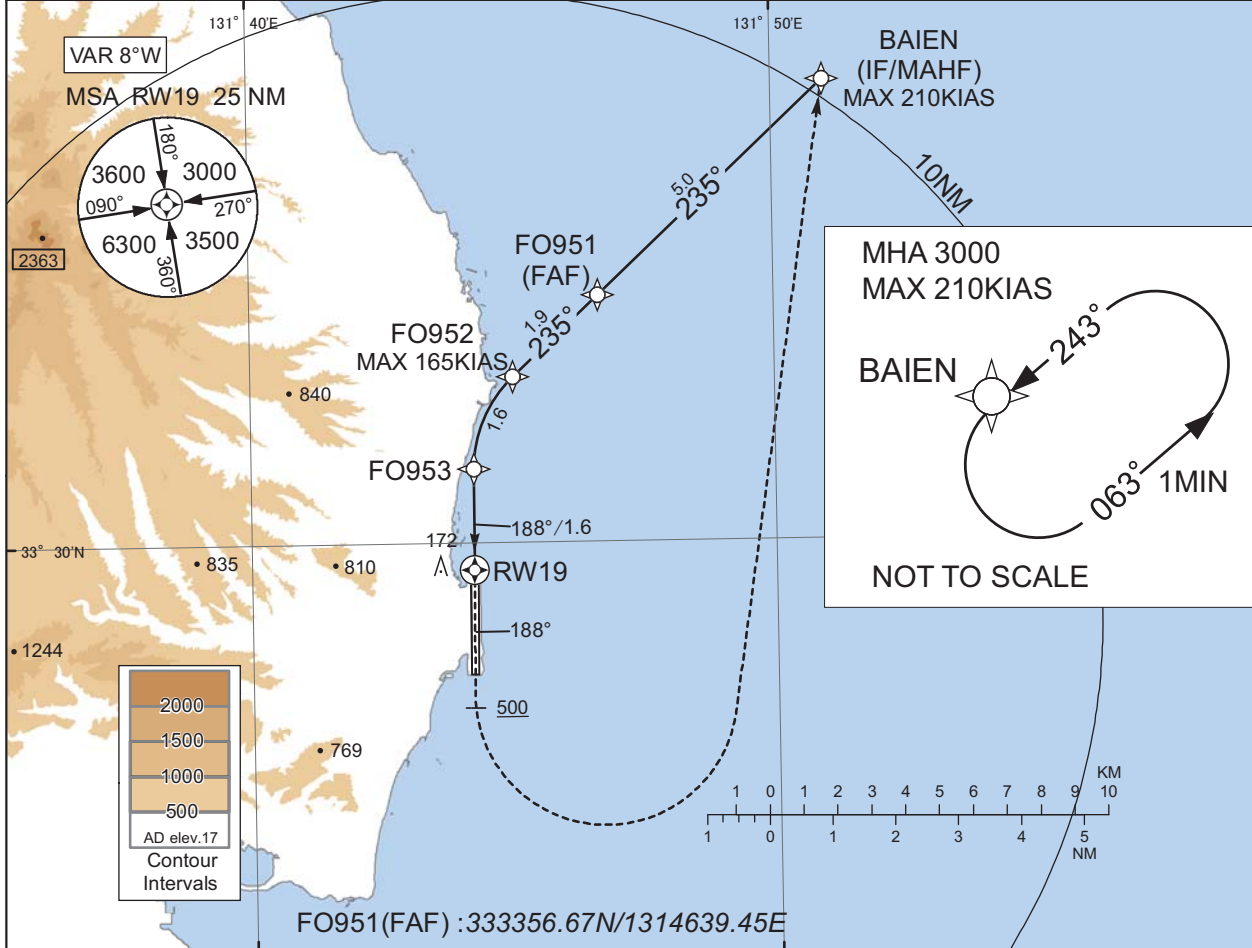
INSTRUMENT APPROACH CHART

RJFO / OITA

RNP Y RWY19(AR)

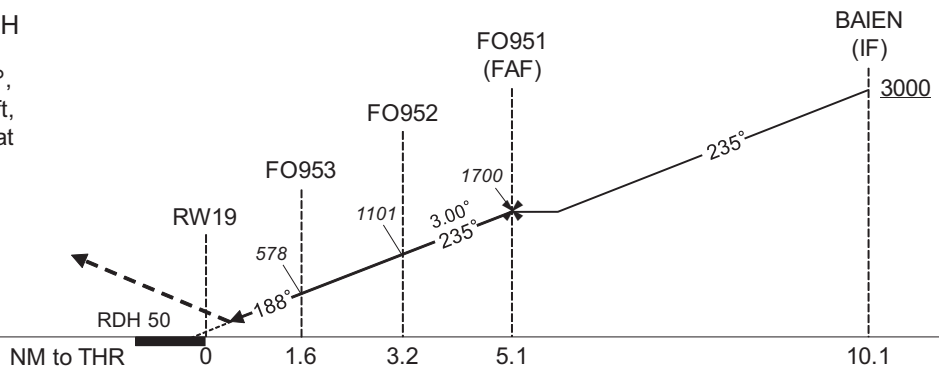
OITA APP 120.6	RNP AR RF required.	OITA TOWER 118.8 - 126.2	RADAR AVBL ATIS 127.8
-------------------	------------------------	-----------------------------	--------------------------

For uncompensated Baro-VNAV systems, procedure not authorized below -5°C / above 45°C



MISSED APPROACH

From RWY19 on track 188°, at or above 500FT turn left, direct to BAIEN and hold at 3000FT. Contact OITA APP.



Missed APCH climb gradient MNM 5.0%

CAT	MINIMA	THR elev. 17	AD elev. 17
	RNP 0.30		
	DA(H)	CMV	
A	-	-	
B	-	-	
C	334(317)	1400	
D		1600	

**Authorization Required**

MINIMA with Missed APCH climb gradient of 2.5% are not established.

CHANGE : VAR. PROC course. HLDG pattern.

INSTRUMENT APPROACH CHART

RJFO / OITA

RNP Y RWY19(AR)

Coding Table

Serial Number	Path Descriptor	Waypoint Identifier	Fly Over	Course °M(°T)	Magnetic Variation	Distance (NM)	Turn Direction	Altitude (FT)	Speed (KIAS)	VPA/ RDH (°/FT)	RNP Value
001	IF	BAIEN	-	-	-8.0	-	-	+3000	-210	-	-
002	TF	FO951	-	235 (226.8)	-8.0	5.0	-	1700	-	-	1.0
003	TF	FO952	-	235 (226.8)	-8.0	1.9	-	1101	-165	-3.00	0.3
004	RF Center: FORF2 r=2.02NM	FO953	-	-	-8.0	1.6	L	578	-	-3.00	0.3
005	TF	RW19	Y	188 (180.4)	-8.0	1.6	-	67	-	-3.00/50	0.3
006	FA	-	-	188 (180.4)	-8.0	-	-	+500	-	-	1.0
007	DF	BAIEN	-	-	-8.0	-	L	3000	-	-	1.0

Path	Waypoint Identifier	Inbound Course °M(°T)	Magnetic Variation	Outbound Time (MIN)	Turn Direction	Minimum Altitude (FT)	Maximum Altitude (FT)	Speed (KIAS)	RNP Value
Hold	BAIEN	243 (234.9)	-8.0	1.0 (-14000)	L	3000	FL140	-210(-14000)	1.0

Waypoint Coordinates

Waypoint Identifier	Coordinates	RF Arc Center Identifier	Coordinates
BAIEN	333720.39N / 1315059.77E	FORF2	333110.65N / 1314640.11E
FO951	333356.67N / 1314639.45E		
FO952	333239.42N / 1314500.88E		
FO953	333111.58N / 1314414.94E		
RW19	332934.89N / 1314414.08E		

CHANGE : PROC course. VAR. HLDG pattern added.