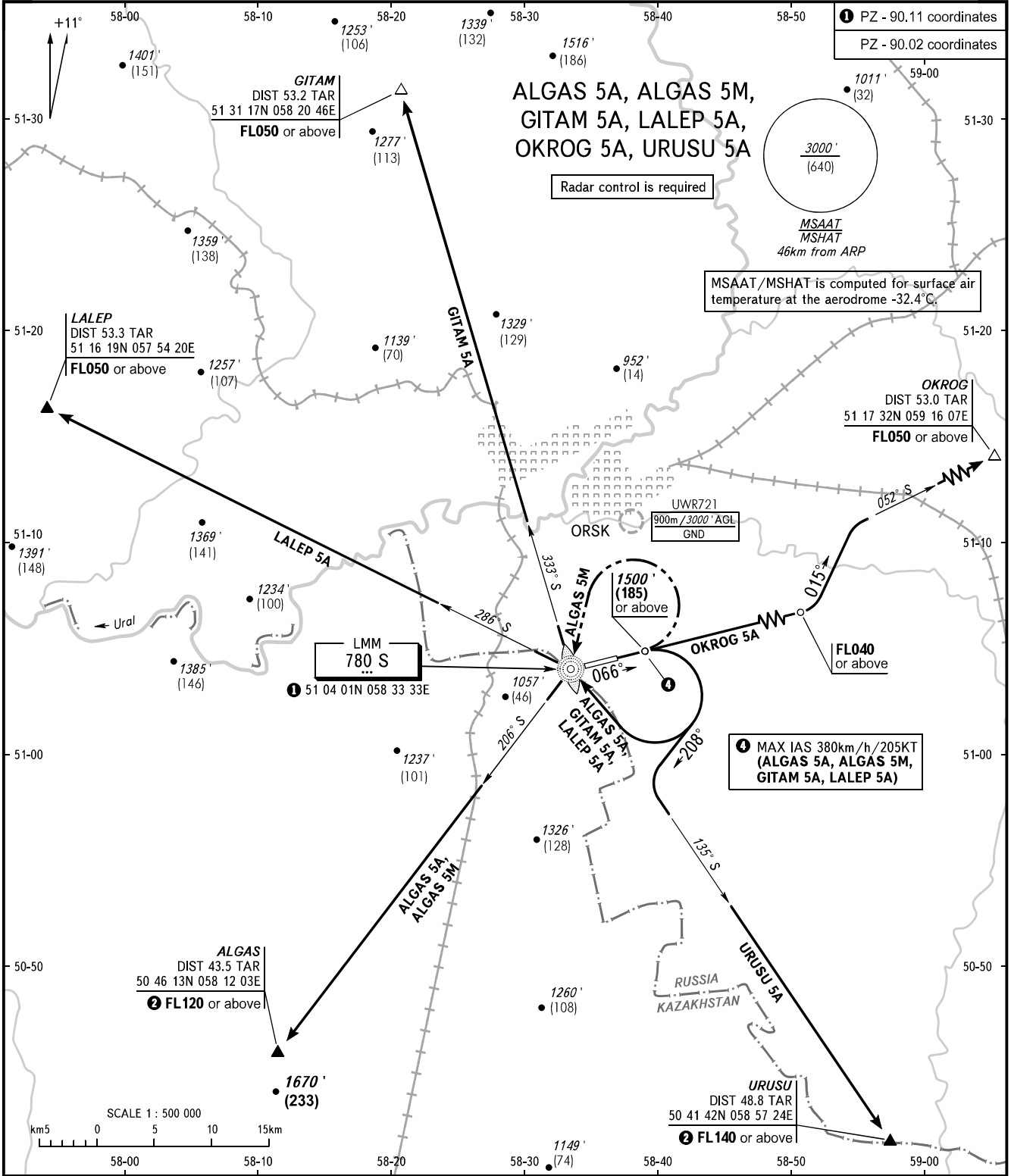


STANDARD DEPARTURE CHART
INSTRUMENT (SID) - ICAO

ORSK, RUSSIA
ORSK
RWY 07

TRANSITION ALT: 3000'
TRANSITION HGT: (640)



TOWER 122.700		<p>WARNING:</p> <p>1. The minimum climb gradients are as follows (required due to the airspace limitation):</p> <ul style="list-style-type: none"> - 4.3% up to FL050 for SID OKROG 5A; - 5.1% up to FL120 for SID ALGAS 5M ③; - 4.8% up to FL120 for SID ALGAS 5A ③; - 6.5% up to FL140 for SID URUSU 5A ③. <p>2. Turn before passing DER is PROHIBITED.</p> <p>② Lower flight levels are AVBL by coordination with ATS unit.</p> <p>③ When flight levels below FL120 are prohibited for passing ALGAS and when flight levels below FL140 are prohibited for passing URUSU.</p>
<p>BEARINGS AND TRACKS ARE MAGNETIC</p> <p>ALTITUDES IN FEET</p> <p>HEIGHTS IN METRES</p> <p>ELEVATIONS IN FEET AND METRES</p> <p>DISTANCES IN KILOMETRES</p>	<p>Alt set: -QNH(QFE on req);</p> <p>-hPa(mm on req).</p>	

CHANGE: MAX IAS