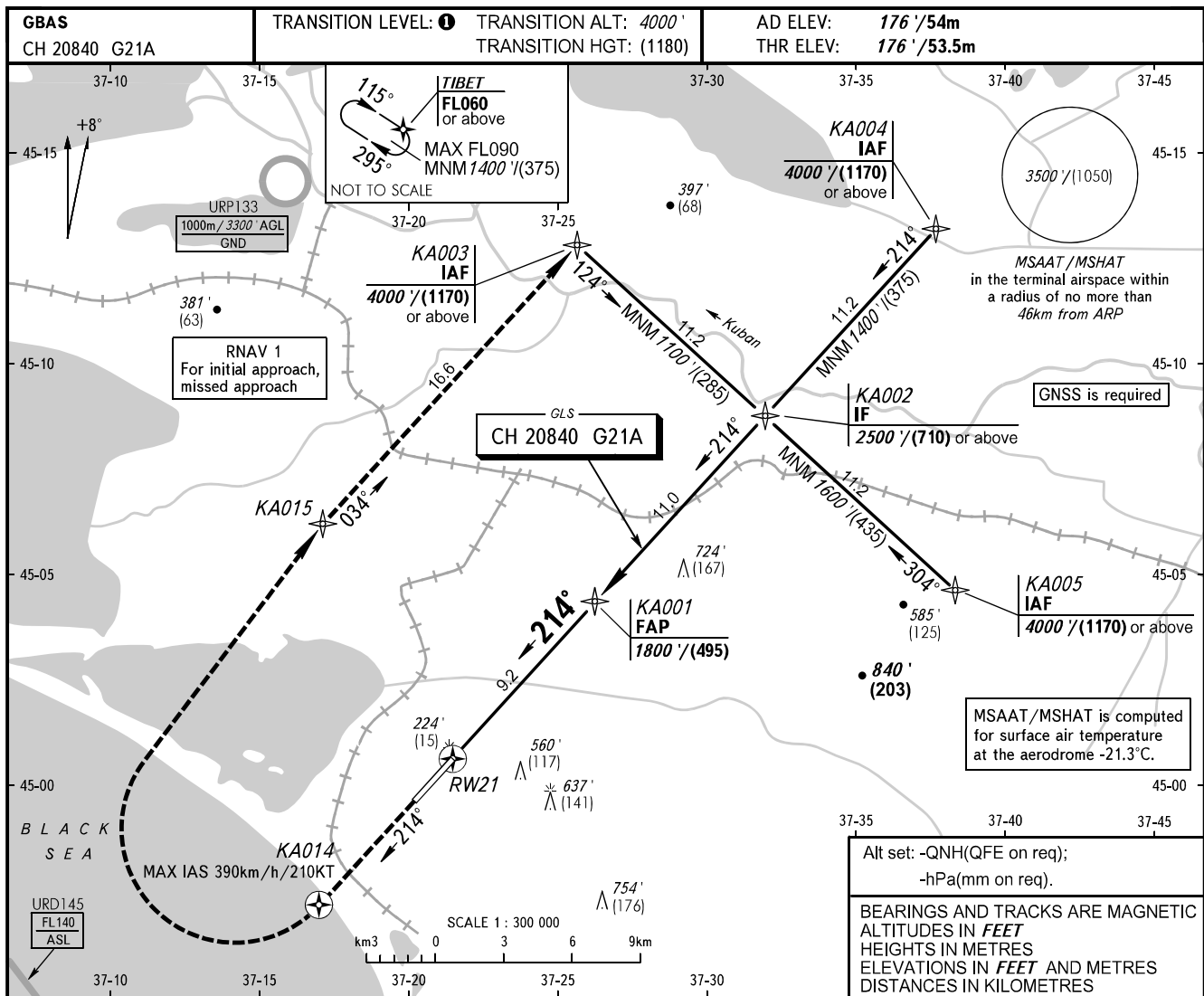


**INSTRUMENT
APPROACH
CHART - ICAO**

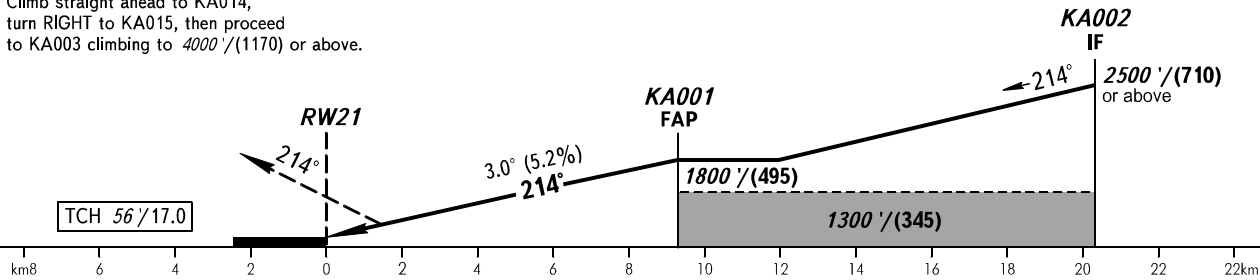
ANAPA RADAR **118.700**
ANAPA TOWER **119.800**

ANAPA, RUSSIA
VITYAZEVO
GLS RWY 21



MISSED APPROACH

Climb straight ahead to KA014, turn RIGHT to KA015, then proceed to KA003 climbing to 4000'/(1170) or above.



OCA(H)		A	B	C	D						
Straight-in	CAT I	314' (138') (43)	324' (148') (46)	335' (159') (49)	350' (174') (53)						
	Approach										
Circling		860' (680') (210)	940' (760') (235)	1040' (860') (265)	1150' (980') (300)						
GROUND SPEED		km/h	150	180	210	240	270	300	330	360	390
		kt	81	97	113	130	146	162	178	194	211
RATE OF DESCENT		m/s	2.2	2.6	3.0	3.5	3.9	4.3	4.8	5.2	5.6
		ft/min	427	512	597	682	768	853	938	1024	1109

- 1** TRANSITION LEVEL:
- FL050 when QNH is 1013 hPa (760mm mercury column) or above;
 - FL060 when QNH is 977 hPa (733mm mercury column) or above, but less than 1013 hPa (760mm mercury column);
 - FL070 when QNH is less than 977 hPa (733mm mercury column).