

VORTAC DBQ 115.8 Chan 105	APP CRS 138°	Rwy Idg TDZE Apt Elev 6502 1077 1077
---	------------------------	--

VOR RWY 13

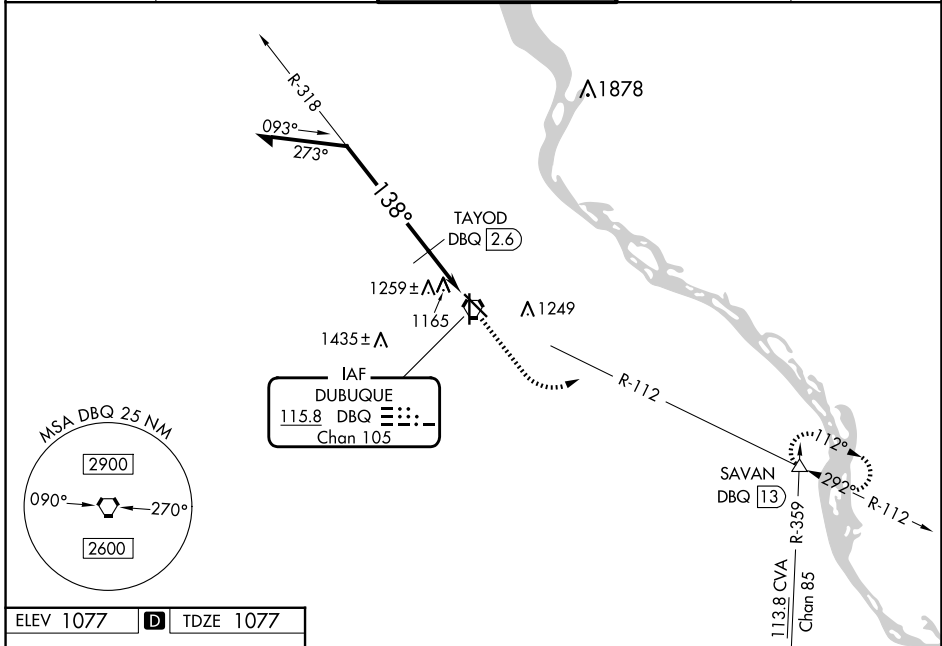
DUBUQUE RGNL (DBQ)

Inop table does not apply to Cat C. If local altimeter setting not received, use Monticello altimeter setting and increase all MDAs 100 feet. VDP NA when using Monticello altimeter setting.

MALS

MISSED APPROACH: Climb to 2500 then climbing left turn to 3300 via DBQ VORTAC R-112 to SAVAN INT/13 DME and hold.

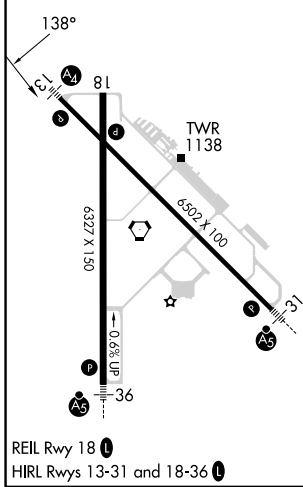
ATIS 127.25	CHICAGO CENTER 133.95 281.4	DUBUQUE TOWER * 119.5 (CTAF) 254.4	GND CON 121.8	UNICOM 122.95
-----------------------	---------------------------------------	--	-------------------------	-------------------------



NC-3, 20 MAR 2025 to 17 APR 2025

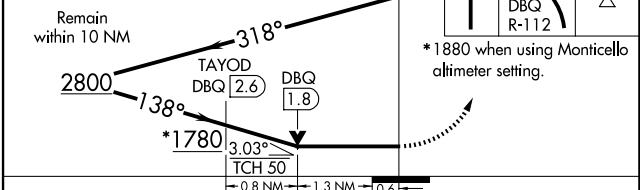
NC-3, 20 MAR 2025 to 17 APR 2025

ELEV 1077	D	TDZE 1077
-----------	----------	-----------



VGSI and descent angles not coincident (VGSI Angle 3.00/TCH 44).

Remain within 10 NM



CATEGORY	A	B	C	D
S-13	1780-3/4	703 (800-3/4)	1780-2 703 (800-2)	1780-2 1/4 703 (800-2 1/4)
C CIRCLING	1780-1	703 (800-1)	1780-2 703 (800-2)	1800-2 1/4 723 (800-2 1/4)
TAYOD FIX MINIMUMS				
S-13	1520-3/4	443 (500-3/4)	1520-1 1/4 443 (500-1 1/4)	1520-1 1/2 443 (500-1 1/2)
C CIRCLING	1580-1	503 (600-1)	1600-1 1/2 523 (600-1 1/2)	1800-2 1/4 723 (800-2 1/4)