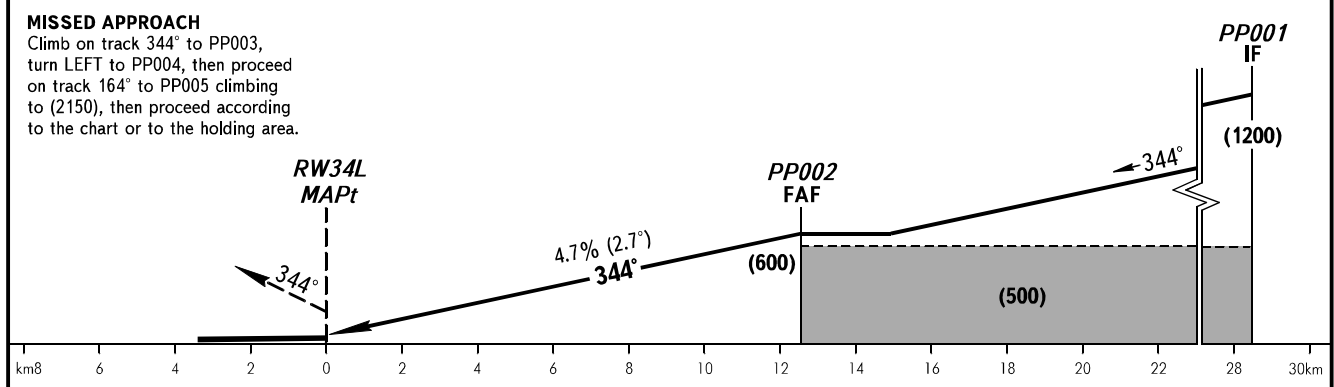
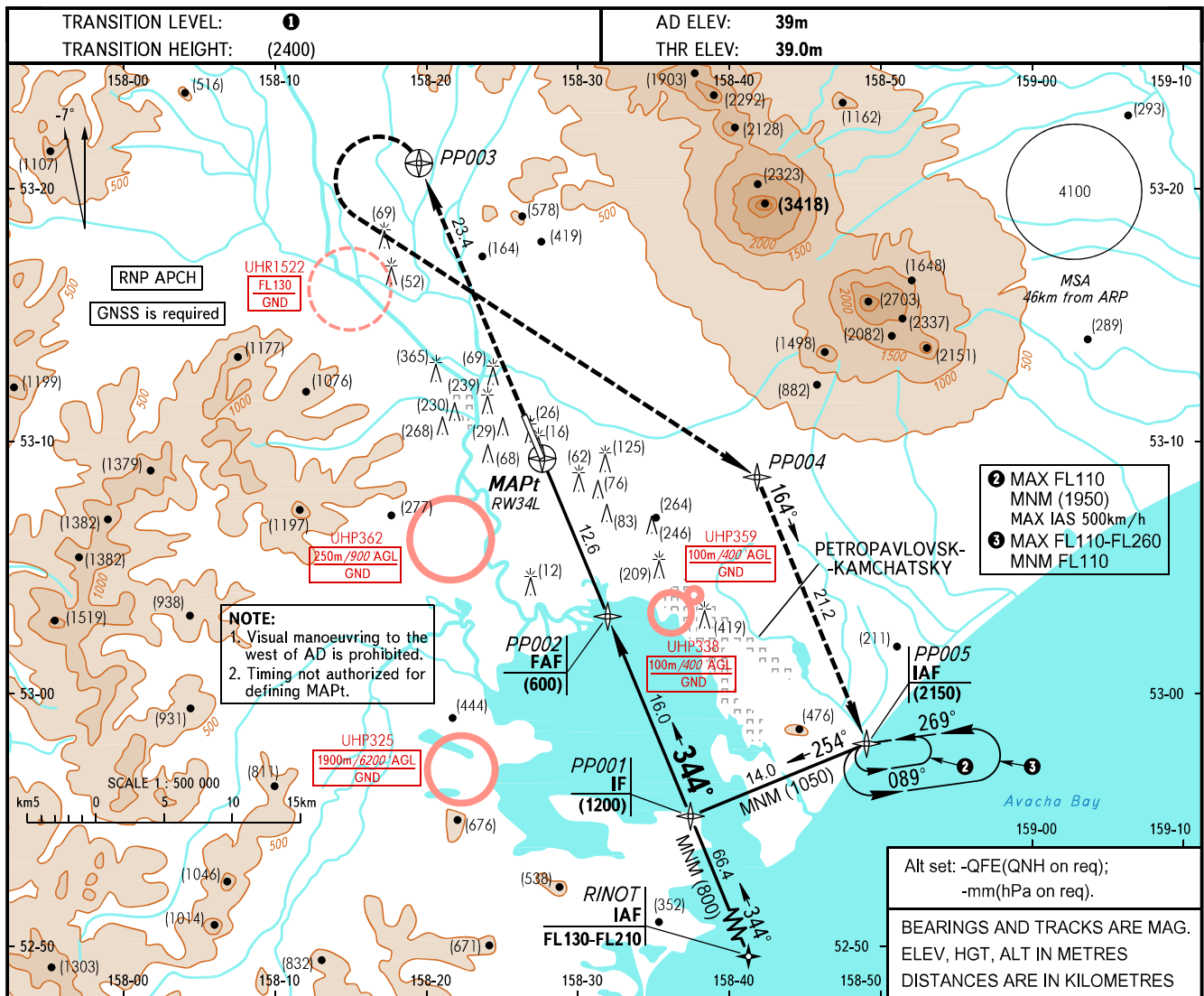


**INSTRUMENT
APPROACH
CHART - ICAO**

START **118.100**
RADAR **119.400**

PETROPAVLOVSK-KAMCHATSKY, RUSSIA
YELIZOVO
RNAV RWY 34L



OCA(H)		A	B	C	D						
Straight-in	MNM	445(405)	445(405)	445(405)	445(405)						
	climb gradient	220(185)	220(185)	220(185)	220(185)						
Approach	2.5%	445(405)	445(405)	445(405)	445(405)						
	3.8%	220(185)	220(185)	220(185)	220(185)						
Circling		460(420)	460(420)	520(480)	555(520)						
GROUND SPEED		km/h	150	180	210	240	270	300	330	360	390
RATE OF DESCENT		m/s	2.0	2.4	2.7	3.1	3.5	3.9	4.3	4.7	5.1

1 TRANSITION LEVEL:
- FL090 when QFE is 756mm mercury column or above;
- FL100 when QFE is 729mm mercury column or above, but less than 756mm mercury column;
- FL110 when QFE is less than 729mm mercury column.

WARNING
During missed approach maintain climb gradient of 3.8% up to (1350).