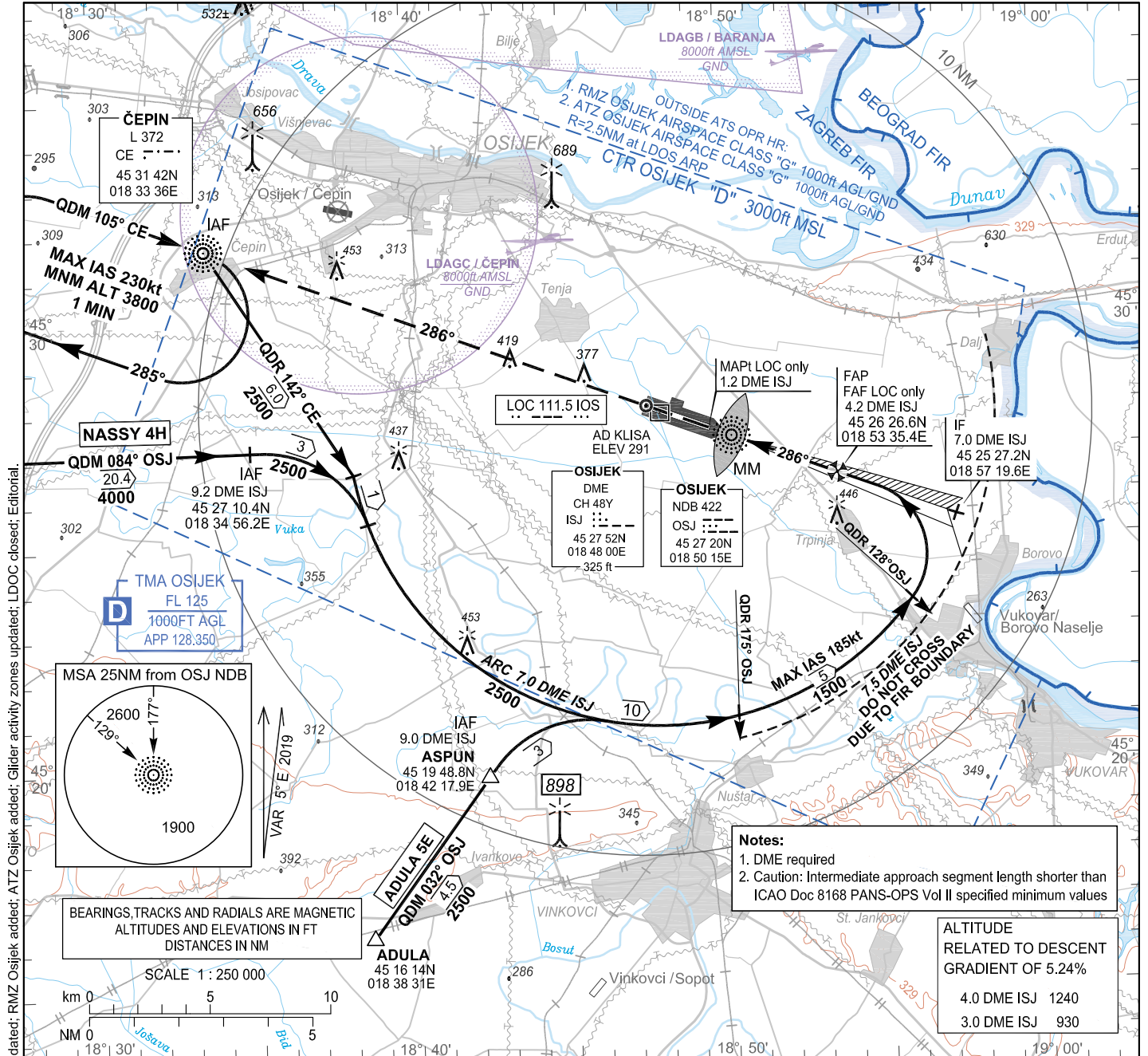


INSTRUMENT APPROACH  
CHART-ICAO

**AD ELEV 291**  
HEIGHTS RELATED  
TO THR 29 ELEV 290

OSIJEK APPROACH 128.350  
OSIJEK APPROACH ALTN 125.850  
OSIJEK TOWER 128.350

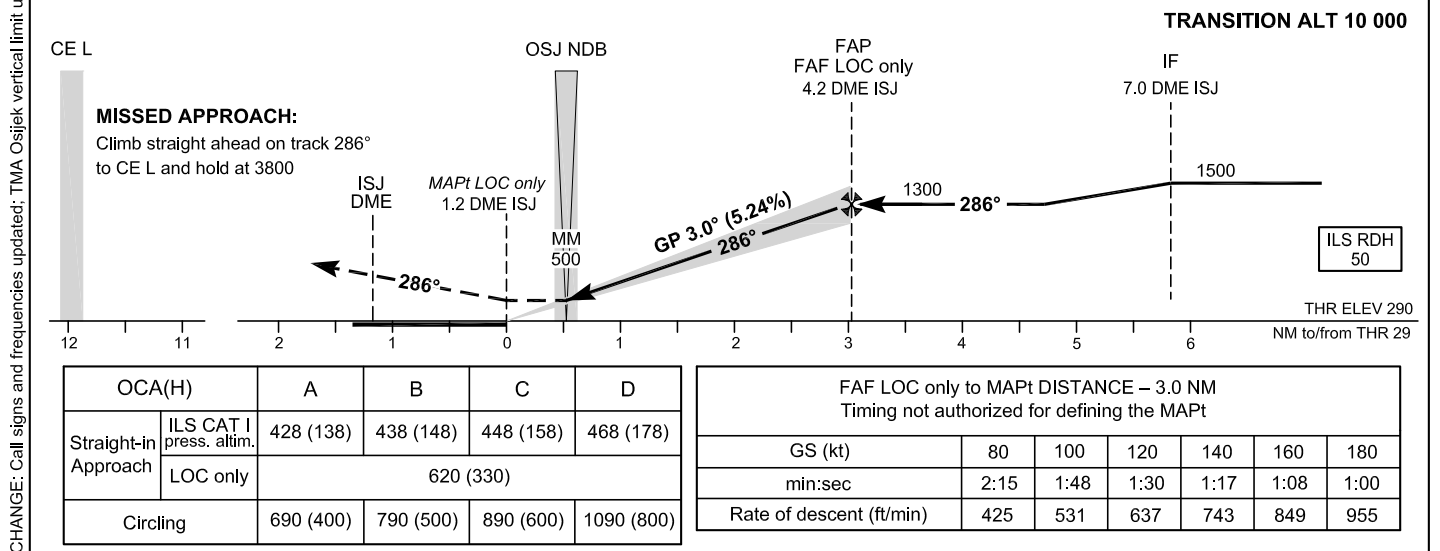
**OSIJEK / Klisa (LDOS)**  
ILS z or LOC z RWY 29



- Notes:**
1. DME required
  2. Caution: Intermediate approach segment length shorter than ICAO Doc 8168 PANS-OPS Vol II specified minimum values

**ALTITUDE RELATED TO DESCENT GRADIENT OF 5.24%**

4.0 DME ISJ	1240
3.0 DME ISJ	930



OCA(H)	A	B	C	D	
Straight-in Approach	ILS CAT I press. altim.	428 (138)	438 (148)	448 (158)	468 (178)
	LOC only	620 (330)			
Circling	690 (400)	790 (500)	890 (600)	1090 (800)	

FAF LOC only to MAPt DISTANCE – 3.0 NM Timing not authorized for defining the MAPt						
GS (kt)	80	100	120	140	160	180
min:sec	2:15	1:48	1:30	1:17	1:08	1:00
Rate of descent (ft/min)	425	531	637	743	849	955

## OSIJEK / Klisa (LDOS)

ILS z or LOC z RWY 29

AERONAUTICAL DATABASE REQUIREMENTS			
Conventional procedure essential fixes/points			
ILS z or LOC z RWY 29			
LOC only - final approach descent angle: 3.00°			
Fix identification	Coordinates	True bearing or ARC distance providing track	True bearing or distance providing intersection
IAF (CE L)	453142.33N 0183336.18E	-	-
IAF (via NASSY)	452710.4N 0183456.2E	089.10° (OSJ NDB)	9.22 DME ISJ
IAF (ASPUN)	451948.8N 0184217.9E	036.69° (OSJ NDB)	9.00 DME ISJ
SDF Initial	452103.0N 0185014.8E	ARC 7.00 DME ISJ	180.07° (OSJ NDB)
IF	452527.2N 0185719.6E	290.56° (IOS LOC)	7.00 DME ISJ
FAF LOC only	452626.6N 0185335.4E	290.56° (IOS LOC)	4.19 DME ISJ
MAPt LOC only (THR 29)	452730.26N 0184934.67E	290.56° (IOS LOC)	1.17 DME ISJ

CHANGE: Call signs and frequencies updated; TMA Osijek vertical limit updated; RMZ Osijek added; ATZ Osijek added; Glider activity zones updated; LDOC closed; Editorial.