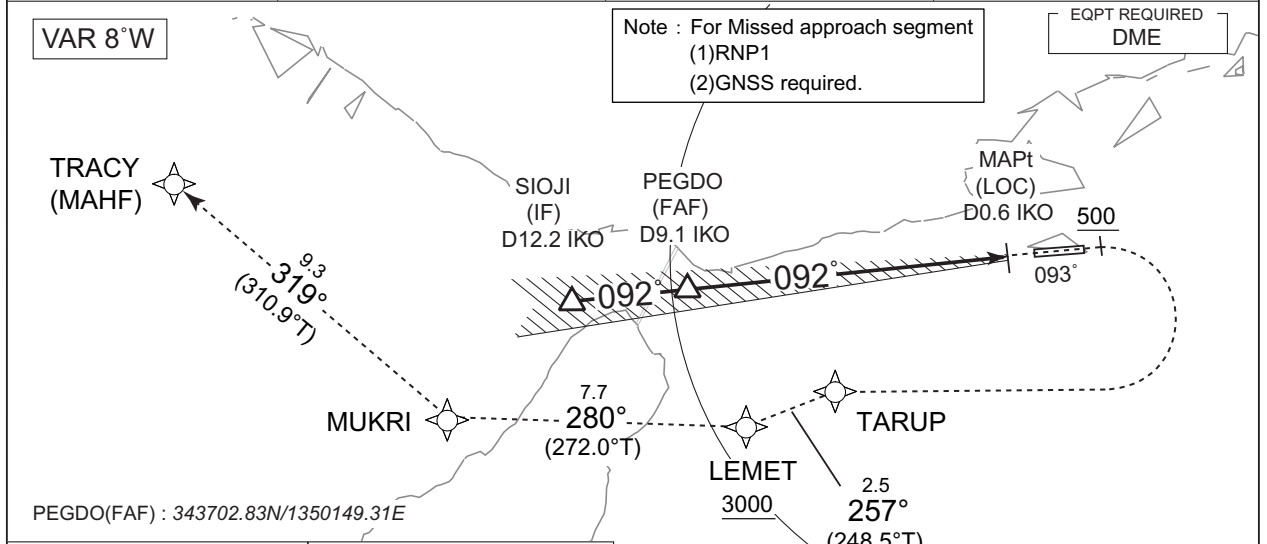


INSTRUMENT APPROACH CHART

RJBE / KOBE

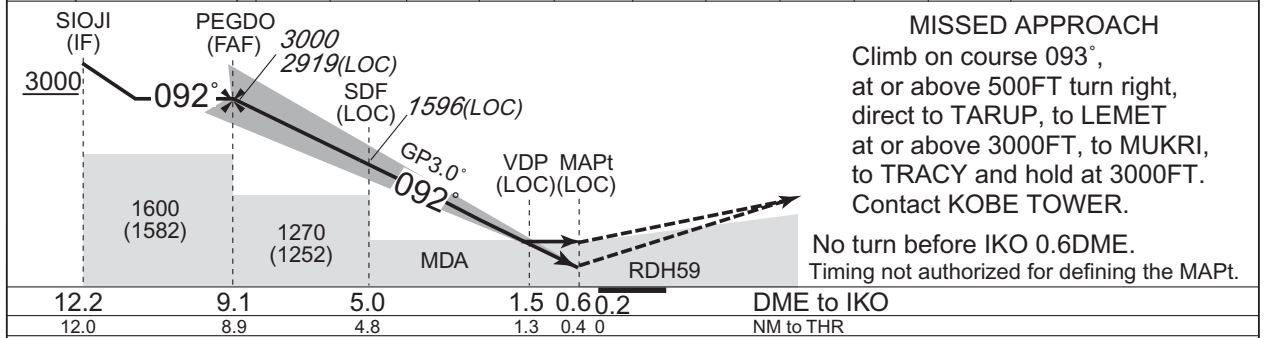
ILS Z or LOC Z RWY09

<b>KANSAI RADAR</b> 121.15 – 120.85 261.2	<b>ILS-LOC</b> 109.15 IKO <b>ILS-GP</b> 331.25 <b>ILS-DME</b> CH-28Y	<b>KOBE TOWER</b> 118.5 – 126.2	<b>RADAR AVBL</b> ATIS 128.075
---	---	------------------------------------	-----------------------------------



<b>RNAV HLDG</b> NOT TO SCALE 1MIN(at or below FL140) 1.5MIN(above FL140)	<b>Using NAVAID</b> NOT TO SCALE MHA 3000 MAX 230KIAS LOC Course to RWY09	<b>MSA 25NM</b> 4800 ARP ARP : 343758N/1351326E	<b>TARUP</b> 343423.6N 1350626.5E <b>LEMET</b> 343329.7N 1350340.2E <b>MUKRI</b> 343345.5N 1345419.2E <b>TRACY (MAHF)</b> 343949.3N 1344547.8E
--	---	--	---

NM to IKO	FAF	9	8	7	6	5	4	3	2	MAPt
ALT (3.0° APCH Path)	2919	2875	2557	2238	1920	1601	1283	964	646	-



Missed APCH climb gradient MNM 5.0%

<b>MINIMA</b>		<b>THR elev. 21</b>		<b>AD elev. 18</b>			
CAT	CAT I		LOC		CIRCLING		
	DA(H)	RVR/CMV	MDA(H)	RVR/CMV	MDA(H)	VIS	
A	221 (200)	550	460 (442)	900	510 (492)	1600	
B				1000			
C				1400			2400
D				1400			580 (562)

MINIMA with Missed APCH climb gradient of 2.5% are not established.  
 Circling to SOUTH side of RWY only.

CHANGE : New PROC.